

COUNTY SURVEYORS FILE DATA  
DO NOT REMOVE FROM OFFICE

FILED  
RECEIVED 24

AUG 22 1973

COUNTY SURVEYOR  
DOUGLAS COUNTY, ORE.

SURVEY TO ESTABLISH THE SOUTHERLY BOUNDARY LINES  
AS RECORDED IN BOOK 431, PAGES 11, 12 & 13 - EXCEPTING  
THAT PARCEL RECORDED IN BOOK 504, PAGE 243

FOR R. AND D. MOREHEAD

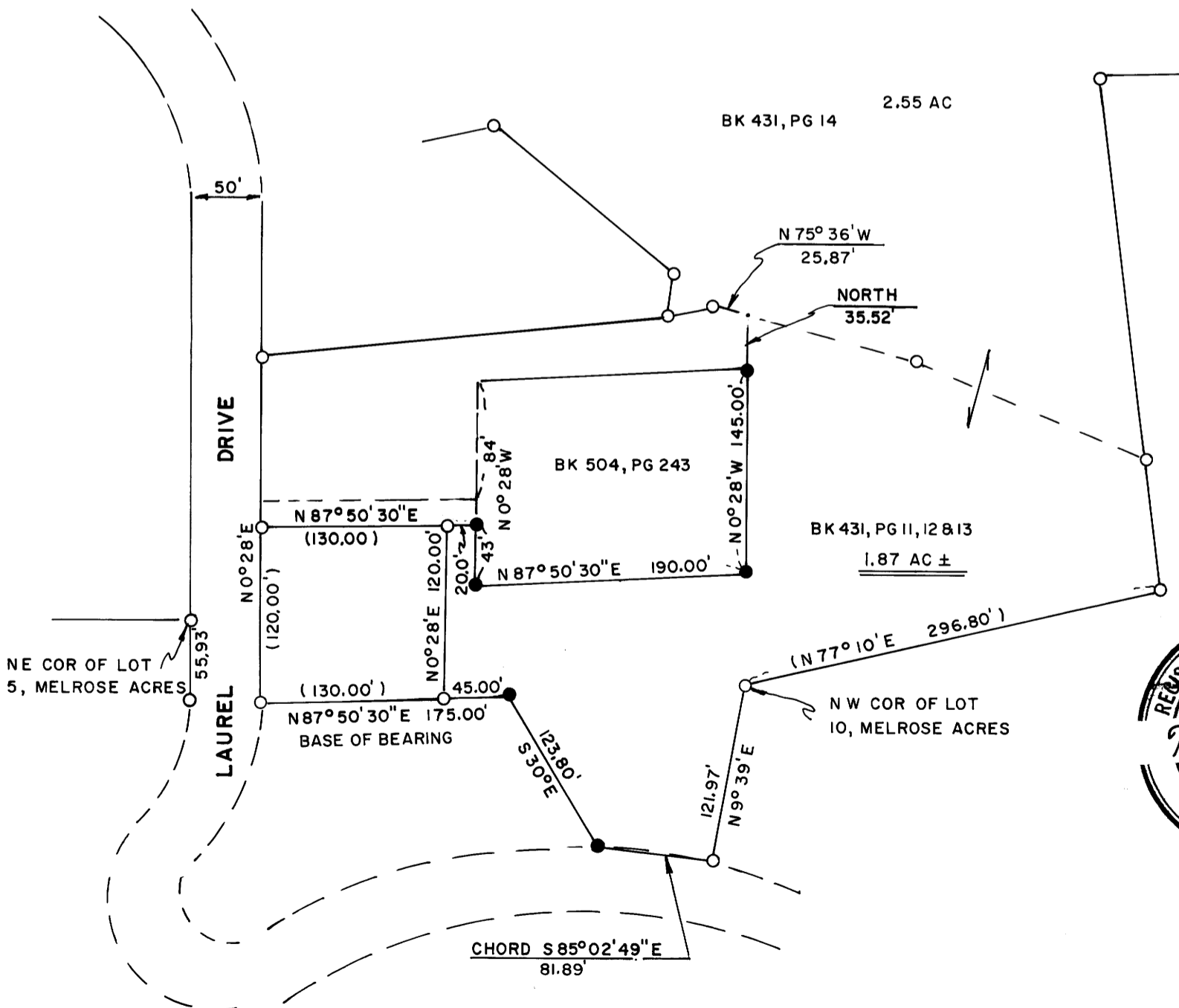
LOCATED IN D.L.C. 50, SEC 9, T27S, R6W, W.M.

AUGUST, 1973

BY HAROLD BALL, CIVIL ENGINEER, ROSEBURG



1" = 100'



- - SET 5/8" I. ROD
- - FOUND MONUMENT - SEE VOL 12, PG 12 - M 28, 61 - M 34, 12