

COUNTY SURVEYORS FILE DATA
DO NOT REMOVE FROM OFFICE

FIELD
RECEIVED

AUG 7 1973

COUNTY SURVEYOR
YAMHILL COUNTY, ORE.

MD

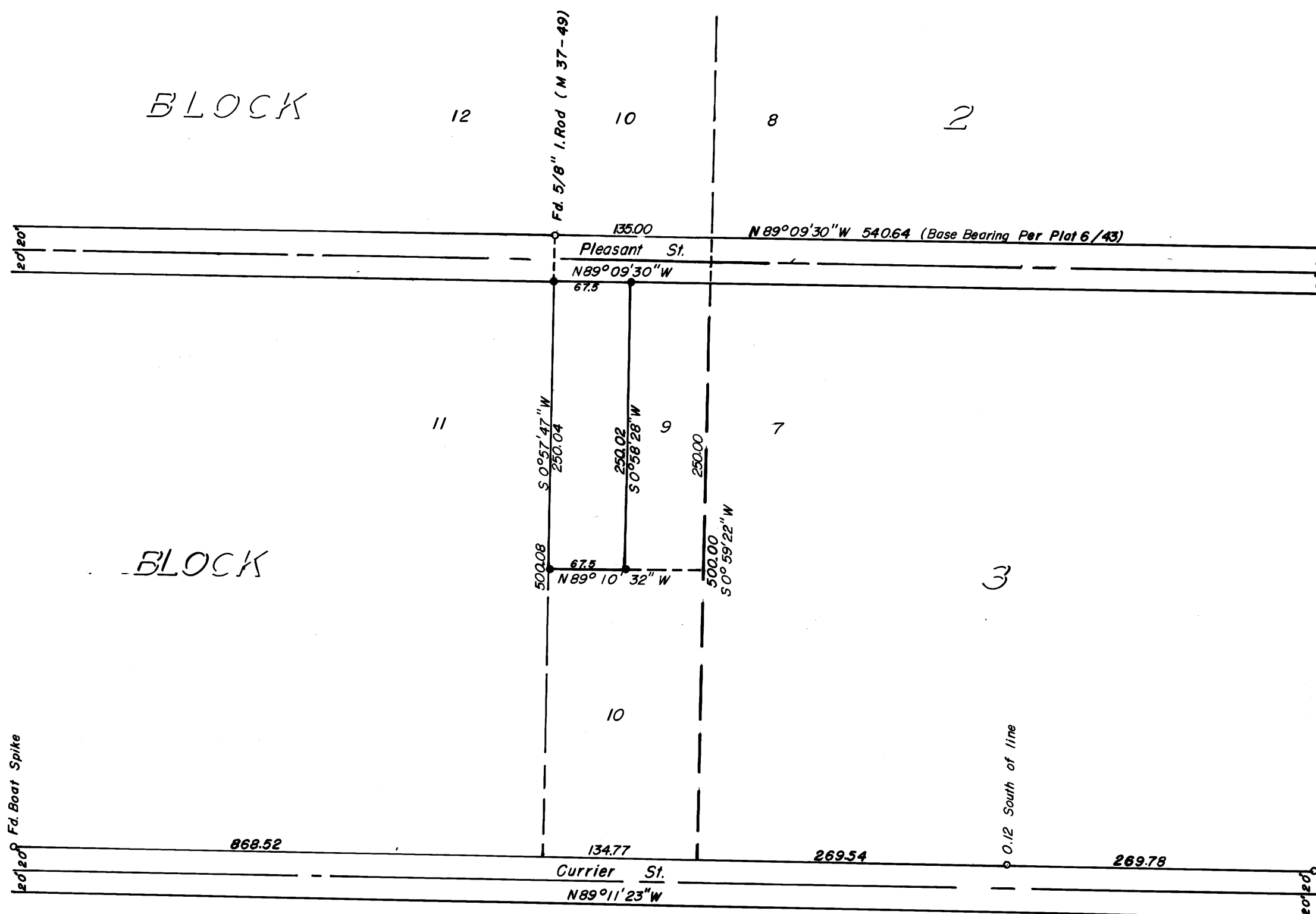
SECT. 36 TWP. 26 STH., RNG. 6 WST., W.M.
SURVEY IN LOT 9, BLOCK 3, FAIRACRES
Surveyed for Walt Russell
Surveyed by Don E. Garrett
August, 1973 Scale 1" = 100'

○ Fd. 3/4" I. Pipe
● Set 5/8" I. Rod

REGISTERED
PROFESSIONAL
LAND SURVEYOR

Don E. Garrett

OREGON
JULY 14, 1961
DON E. GARRETT
544



BLOCK

BLOCK

MAP FILE M 50-42

MAP FILE M 50-42