

**SURVEY FOR PROPERTY CORNERS
IN LOT 8, FRUITVALE ADDITION
SEC. 12, T.27S., R.6 W., W.M.**

**FOR VINE STREET BAPTIST CHURCH
BY BAUGHMAN SURVEYING SERVICE**

AUGUST 1973

SCALE 1" = 30'

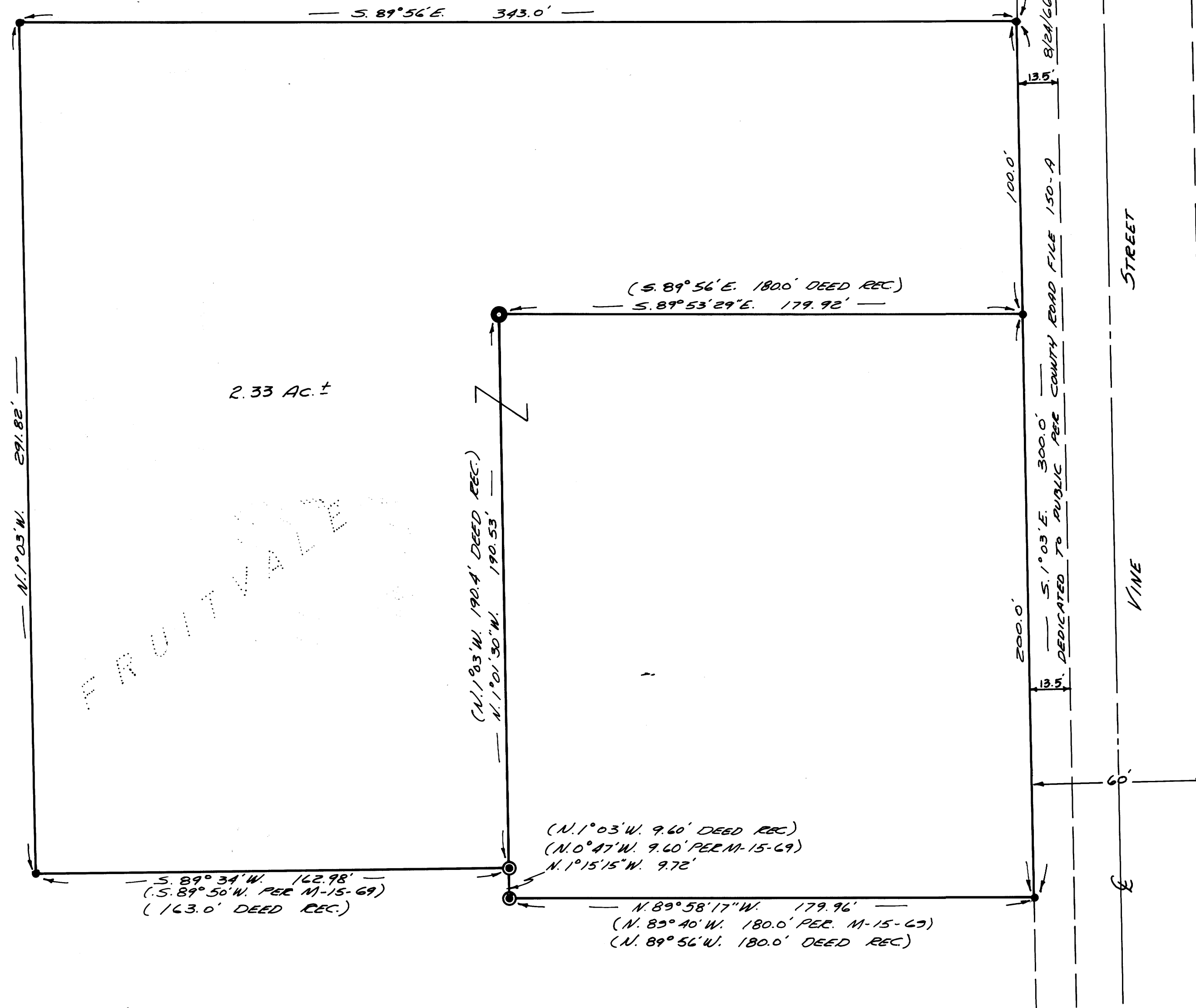
COUNTY SURVEYORS FILE DATA
DO NOT REMOVE FROM OFFICE

FILED
RECEIVED

AUG 7 1973

COUNTY SURVEYOR
DOUGLASS COUNTY, OREGON

mg



REGISTERED
PROFESSIONAL
LAND SURVEYOR

Eugene A. Bloom
OREGON
MAY 13, 1960
EUGENE A. BLOOM
492

LEGEND:

- SET 3/8" I.R.
- ⊙ FD. 3/8" I.R.
- FD. 1" I.P.
- ⊙ FD. 1/2" I.R.

(BASED ON DEED RECORD)

LOT 7

MAP FILE M50-47

MAP FILE M50-47