

COUNTY SURVEYORS FILE DATA
DO NOT REMOVE FROM OFFICE

SURVEY OF PARCEL IN NW 1/4, SEC. 34, T. 28 S., R. 7 W., W.M., DOUG. CO. ORE. FROM ISSAC & BETTY JAMES - TO JOHN & MARILYN SHOEMAKER BY HERBERT L. NORTHCRAFT

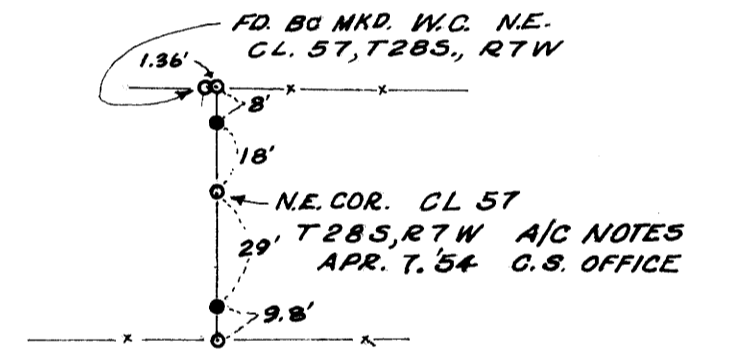
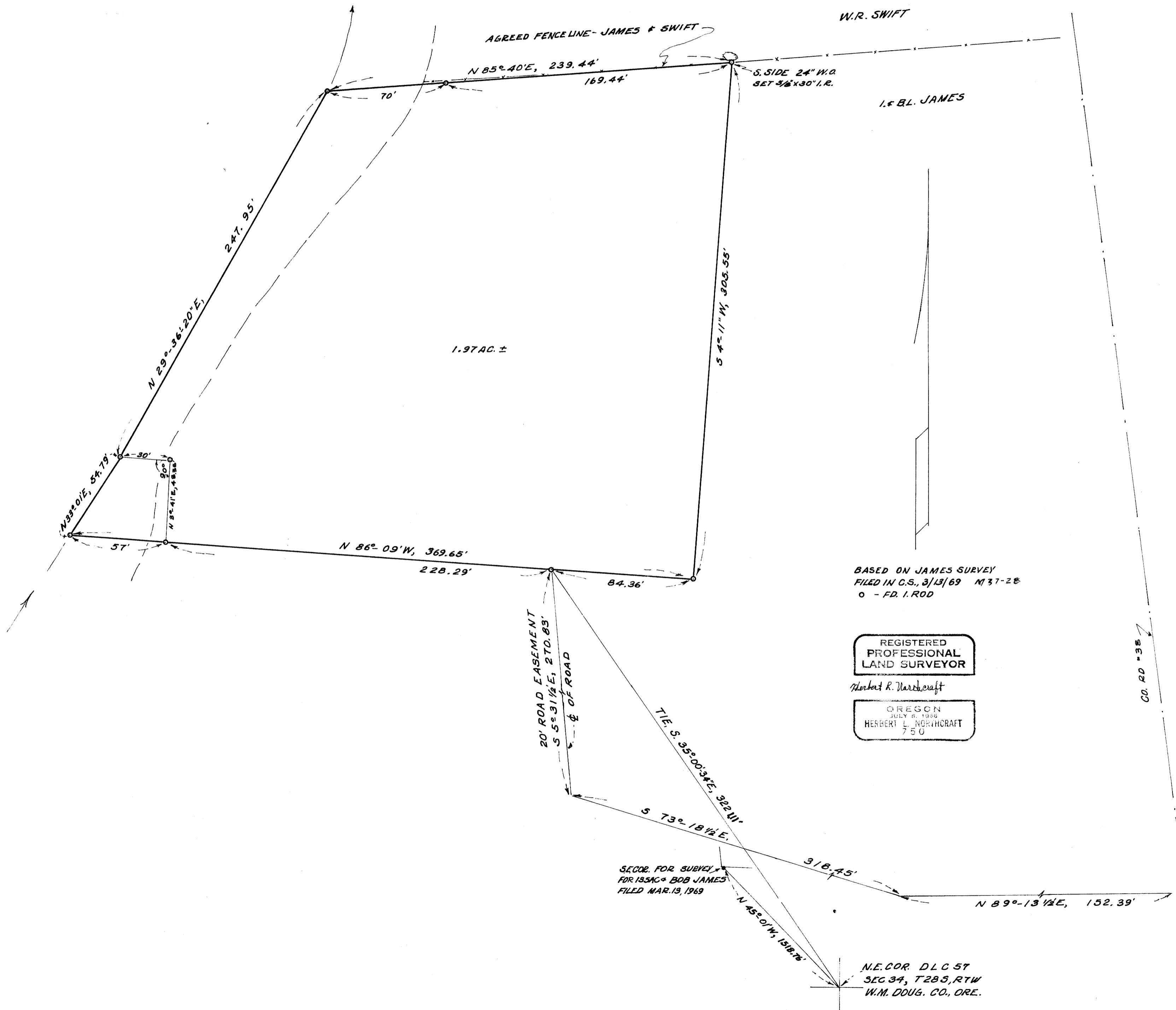
SCALE 1" = 40'

JUNE, 1973

FILED 27
RECEIVED 27

JUN 29 1973

COUNTY SURVEYOR
DOUGLAS COUNTY, ORE.
ML



RELOCATION OF N.E. COR.
DLC # 57 - FROM NOTES - FD I.R.'S
IND. - RESET 3/8" x 30" I.R.'S ON NEW
R/W FENCE LINES (SEE REN. No. 224
FOR CORRECT LOCATION)

MAP FILE M50 - 4

MAP FILE M50 - 4