

COUNTY SURVEYORS FILE DATA
DO NOT REMOVE FROM OFFICE

SURVEY IN SECTS. 14 & 23, TOWNSHIP 26 SOUTH, RANGE 4 WEST, WILLAMETTE MERIDIAN
Surveyed for John Connine by Don E. Garrett
July, 1973

Scale 1" = ¹⁰⁰200'

REGISTERED
PROFESSIONAL
LAND SURVEYOR
Don E. Garrett
OREGON
JULY 14, 1961
DON E. GARRETT
544

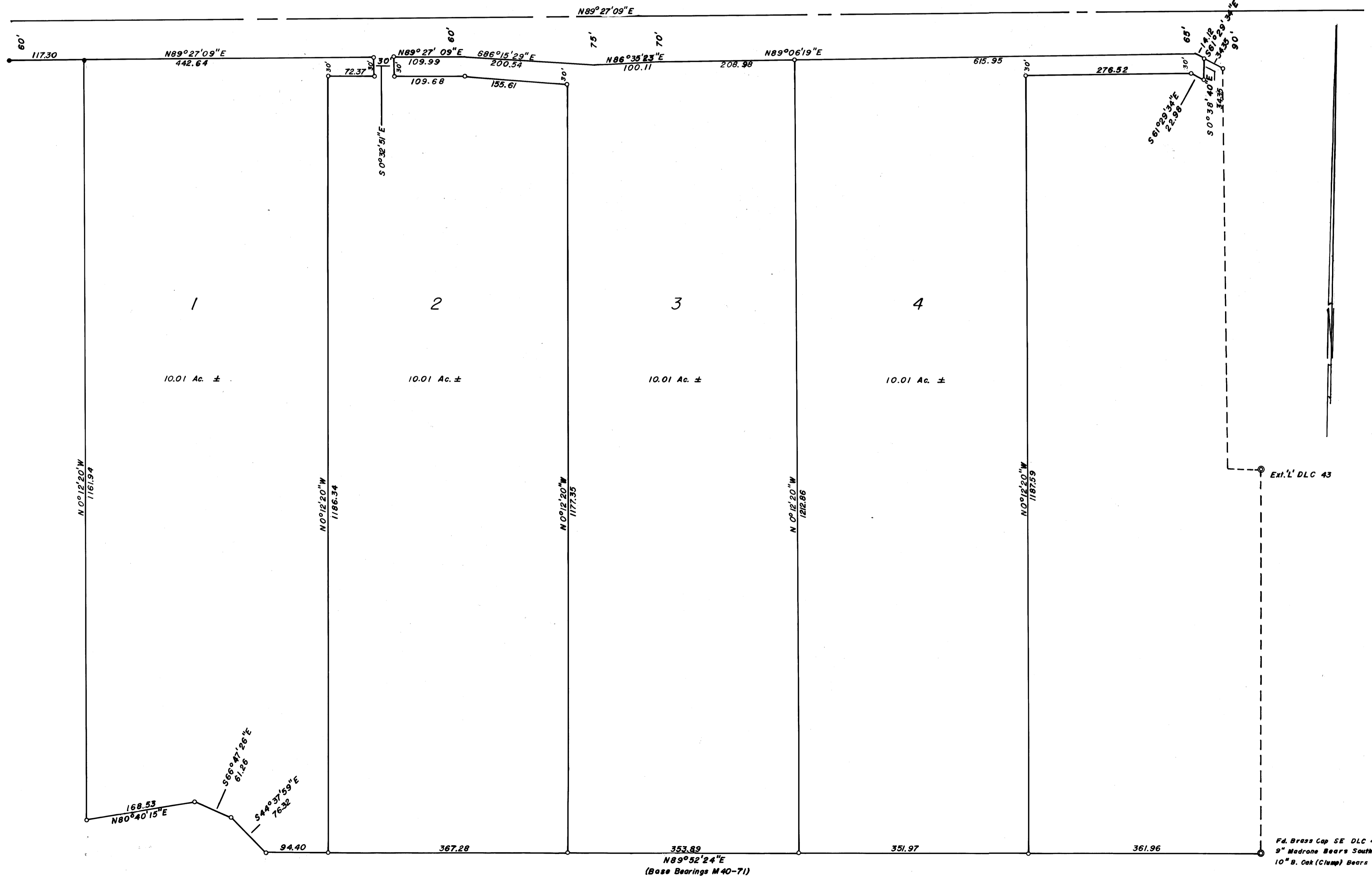
○ Set 5/8" I. Rod
● Fd. 5/8" I. Rod

NORTH

UMPQUA

HIGHWAY

COUNTY SURVEYOR
DOUGLAS COUNTY, OREGON



MAP FILE M 50 - 31

MAP FILE M 50 - 31