

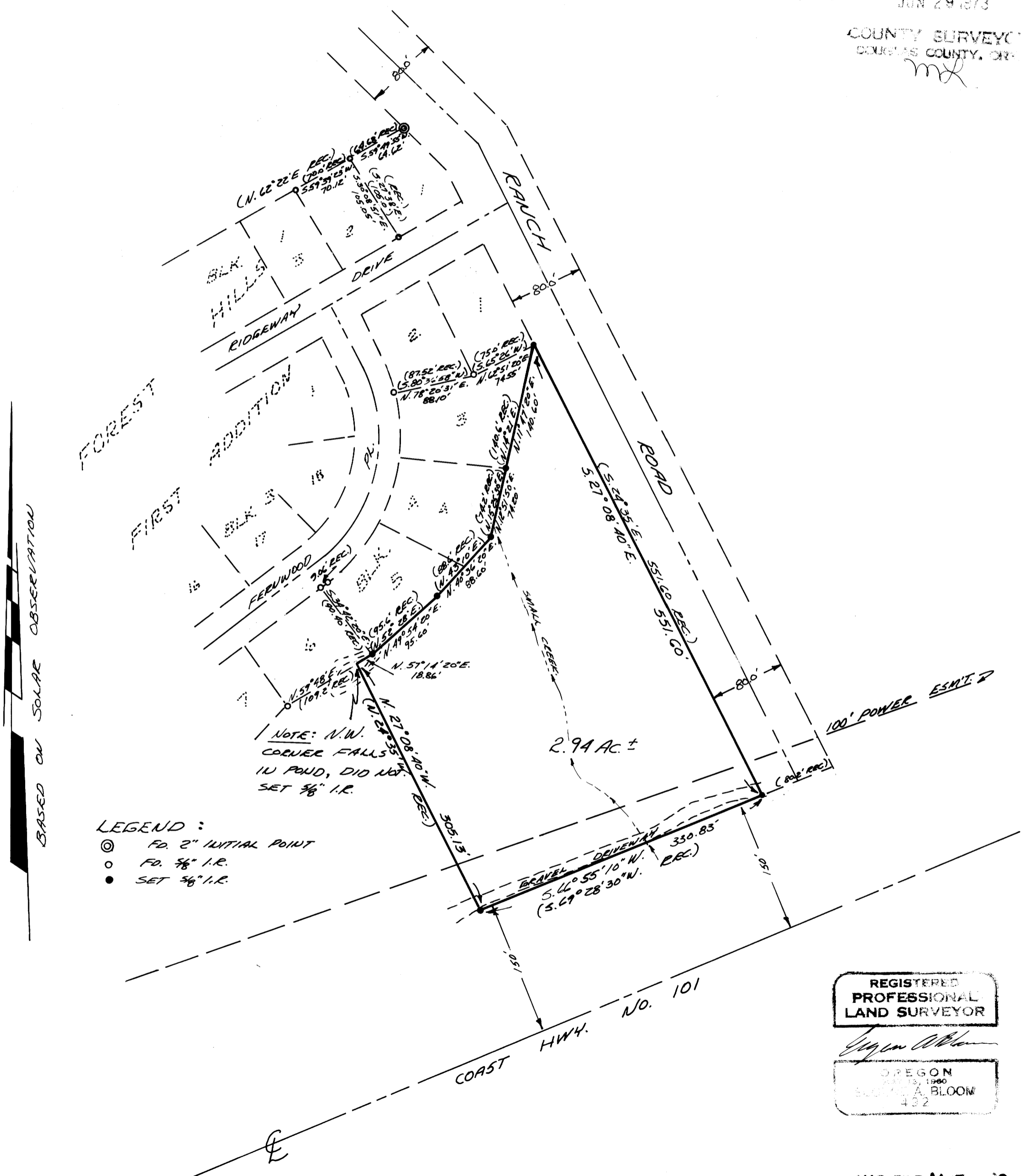
# SURVEY FOR PROPERTY CORNERS IN SEC. 4, T.22S., R.12W., W.M. FOR CHUCK DAHLEN BY BAUGHMAN SURVEYING SERVICE

JUNE 1973

SCALE 1" = 100'

COUNTY SURVEYORS FILE DATA  
DO NOT REMOVE FROM OFFICE

FILE NO. 27  
JUN 29 1973  
COUNTY SURVEYOR  
DOUGLAS COUNTY, OR.  
ML



- LEGEND :
- ⊙ FD. 2" INITIAL POINT
  - FD. 5/8" I.R.
  - SET 5/8" I.R.

REGISTERED  
PROFESSIONAL  
LAND SURVEYOR

*Joyce Allen*

OREGON  
JUL 12 1960  
SUE A. BLOOM  
432