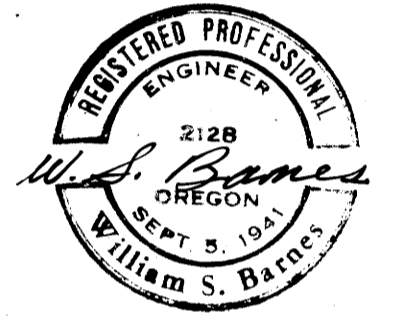


COUNTY SURVEYORS WILL DATE
DO NOT REMOVE FROM OFFICE

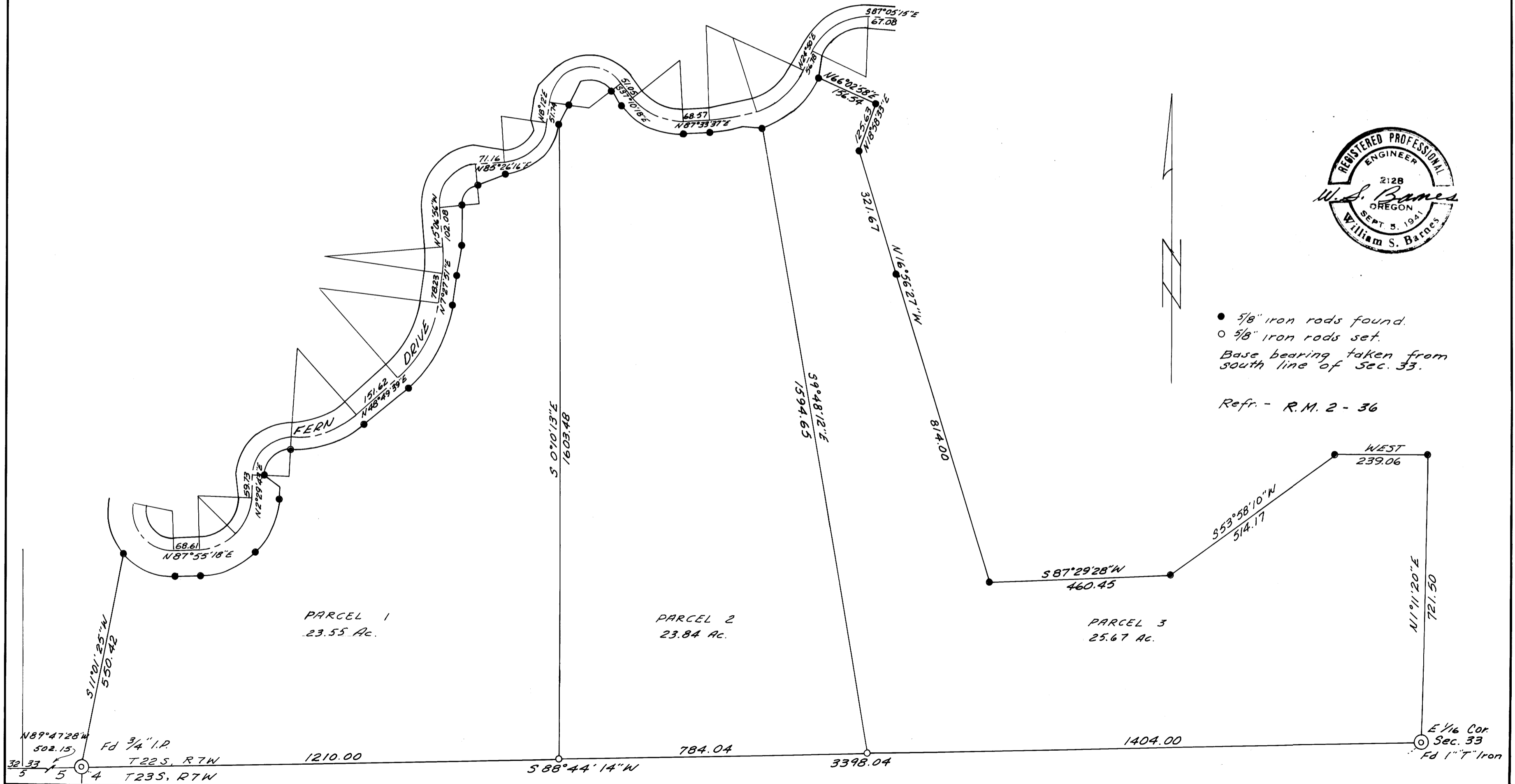
SURVEY IN SEC. 33, T22S, R7W, W.M.
SURVEYED FOR - GEO. WINTERBOTHAM
SURVEYED BY - W. S. BARNES
JULY 1973
SCALE 1"=200'

FILED
COUNTY OF CLATSOP
JULY 1973
W.S.B.



● 5/8" iron rods found.
○ 5/8" iron rods set.
Base bearing taken from south line of Sec. 33.

Refr. - R.M. 2 - 36



M 50 - 19

MAP FILE M 50 - 19