

# SURVEY FOR PROPERTY CORNERS

## A PORTION OF LOTS 4, 5, & 6, WALNUT - PARK - ADD. SEC, 14, T.27S., R. 6 W., W.M.

### FOR HELEN'S FLOWER SHOP BY BAUGHMAN SURVEYING SERVICE

FILED  
RECEIVED

JUN 10 1973

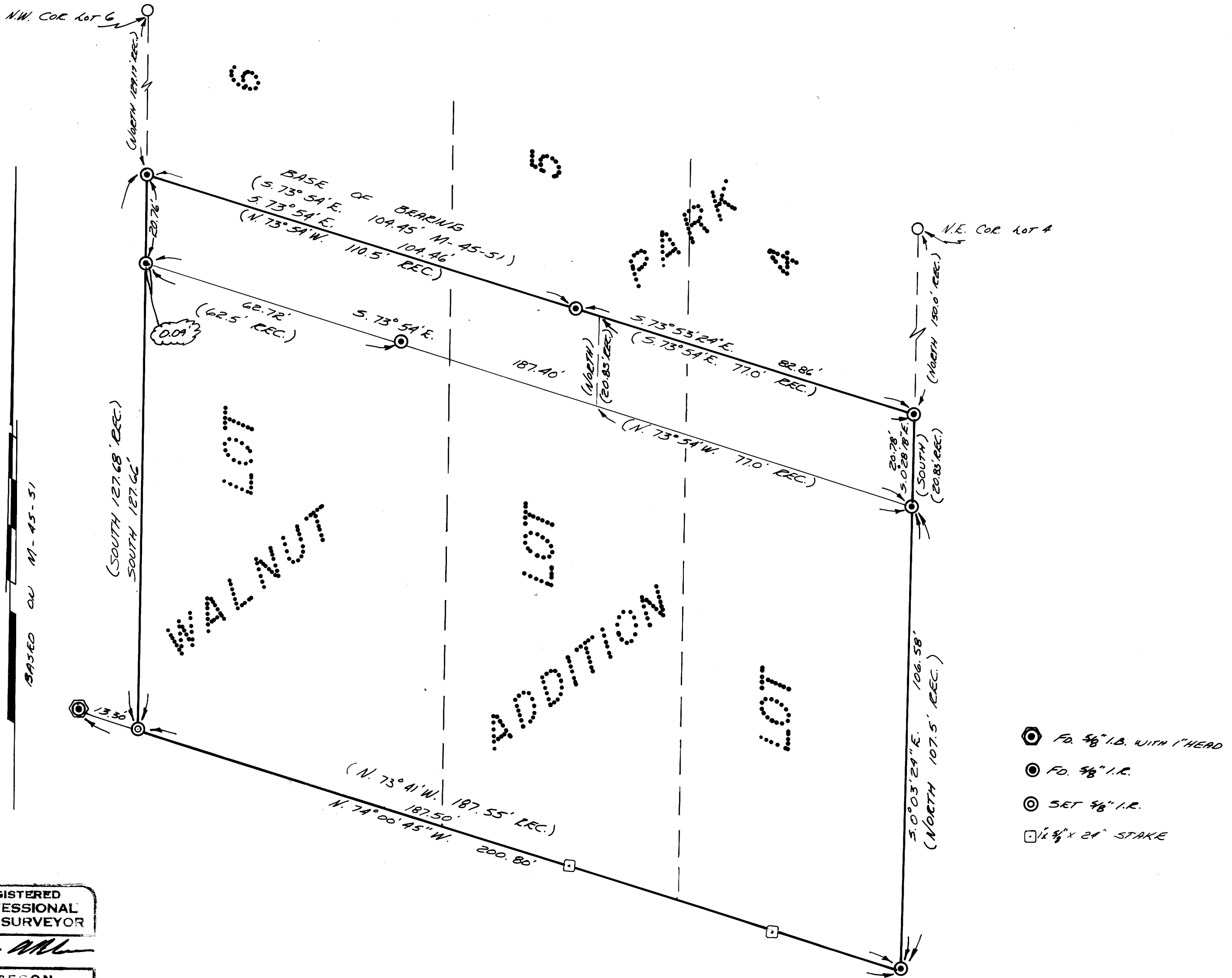
COUNTY SURVEYOR  
DOUGLAS COUNTY, ORE.

COUNTY SURVEYORS FILE DATA  
DO NOT REMOVE FROM OFFICE

*m*

JUNE 1973

SCALE 1" = 20'



REGISTERED  
PROFESSIONAL  
LAND SURVEYOR

*Eugene A. Bloom*

OREGON  
MAY 13, 1960  
EUGENE A. BLOOM  
492