

MAP FILE M 50-1

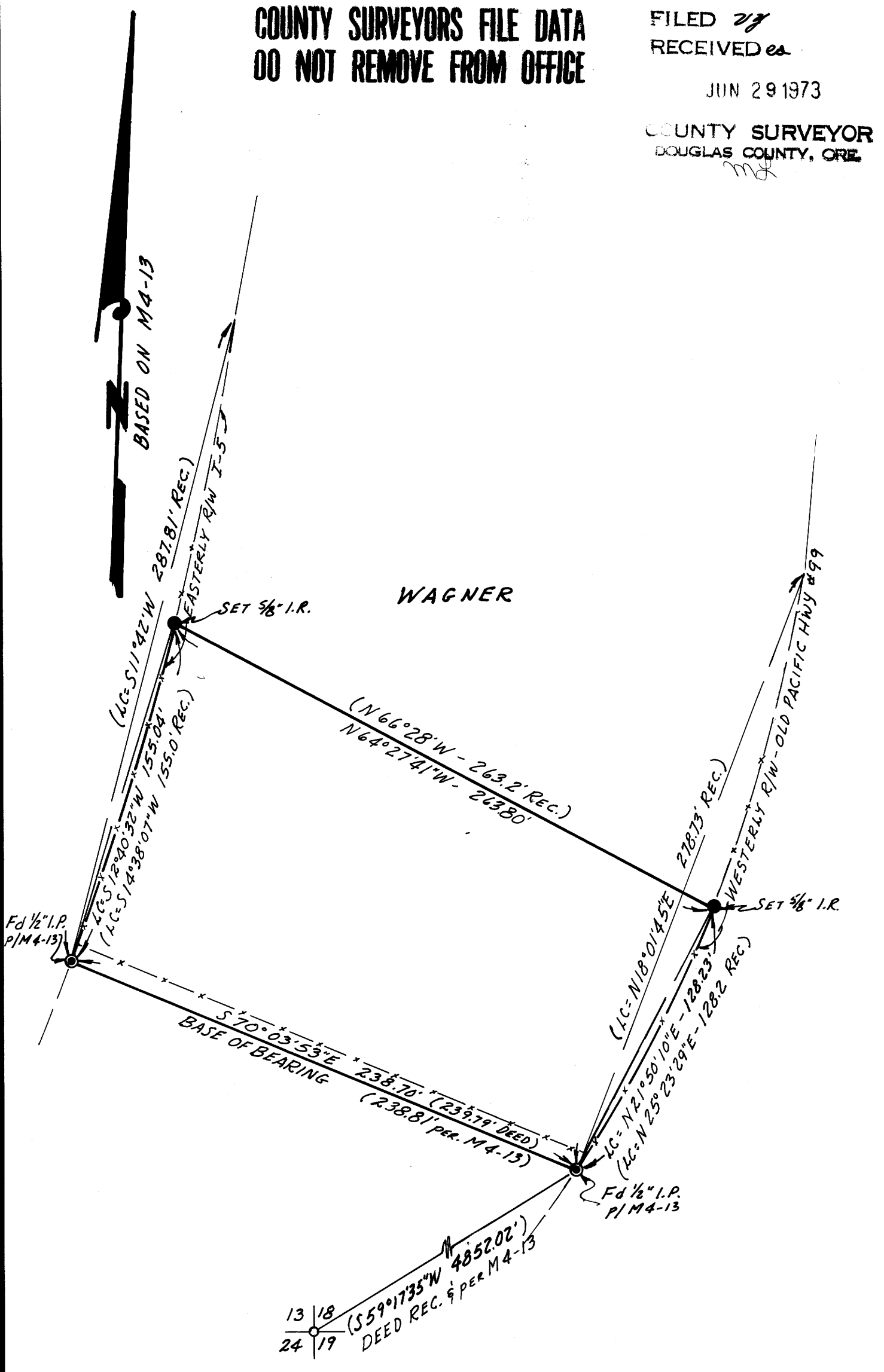
SURVEY OF SOUTH LINE OF WAGNER SITUATED IN SEC. 18, T.29S., R.5W. W.M. FOR: COLE & EDNA WAGNER BY: BAUGHMAN SURVEYING SERVICE JUNE 1973 SCALE: 1"=50'

COUNTY SURVEYORS FILE DATA
DO NOT REMOVE FROM OFFICE

FILED *27*
RECEIVED *es*

JUN 29 1973

COUNTY SURVEYOR
DOUGLAS COUNTY, ORE.
md



REGISTERED
PROFESSIONAL
LAND SURVEYOR

Eugene A. Bloom
OREGON
MAY 13, 1960
EUGENE A. BLOOM
492

MAP FILE M 50-1