

TRANSIT AND TAPE SURVEY

COUNTY SURVEYORS FILE DATA
 DO NOT REMOVE FROM OFFICE

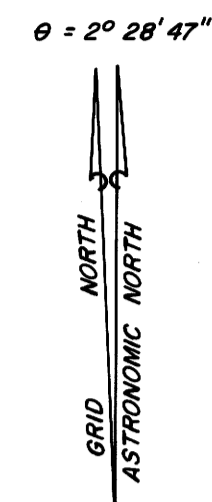
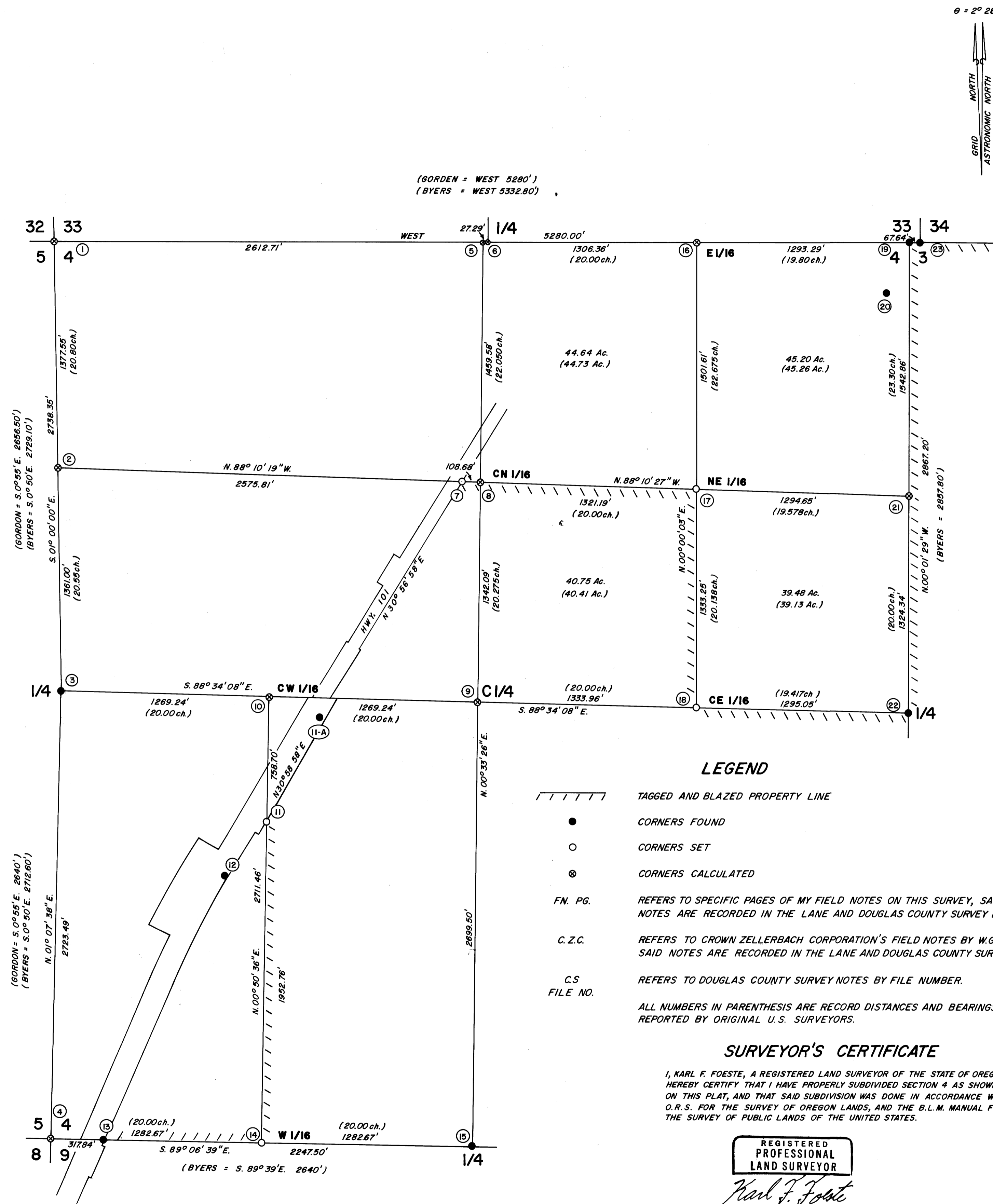
FILED
 RECEIVED
 DEC 17 1974
 COUNTY SURVEYOR
 DOUGLAS COUNTY, ORE.

TO ESTABLISH TAGGED AND BLAZED PROPERTY LINES AS SHOWN
 IN SECTION 4, T.20 S, R.12 W, W. M. FOR CROWN ZELLERBACH
 CORPORATION, SPARROW PACIFIC CORPORATION, AND THE
 UNITED STATES FOREST SERVICE.

SCALE: 1 in. = 400 ft.

DATE: NOVEMBER 25, 1974

BASIS OF BEARING:
 ASTRONOMIC AS DETERMINED
 FROM OBSERVATIONS OF
 POLARIS.



COR. NO. OREGON STATE PLANE COORDINATES, SOUTH ZONE ACCESSORIES—(BEARING TREES AND REFERENCES)

COR. NO.	Y POSITIONS	ACCESSORIES
1	824,412.03 1,039,373.33	CALCULATED CORNER
2	823,034.94 1,039,337.73	CALCULATED CORNER
3	821,674.39 1,039,302.59	I FOUND THE ORIGINAL S.W. BEARING TREE SCRIBED BY HARVEY GORDON IN 1858. IT IS NOW A 26 in. FIR SNAG, BUT WAS CALLED AN 18 in. PINE IN U.S. NOTES. SCRIBING IS VISIBLE. AT RECORD DISTANCE OF 536.59 ft. AND RECORD BEARING OF N. 8° 45' E. FROM SAID BT. I SET FLUSH A 2 in. X 3/8 in. CONCRETE FILLED GALVANIZED IRON PIPE WITH 3 in. BRASS CAP FULLY STAMPED, FROM WHICH I SET TWO NEW B.T.'S: 9 in. PINE BEARS N. 45° W. 40.9 ft. TO FACE SCRIBED "1/4 S 5 BT". 10 in. PINE BEARS S. 89° 30' W. 27.8 ft. TO FACE SCRIBED "1/4 S 5 BT". (FN, PG. 11)
4	818,956.30 1,039,131.24	CALCULATED POSITION OF SECTION CORNER USING THE 1935 TIE SHOWN TO B. P. R. MONUMENT NO. 5-6-30 IN COUNTY SURVEY FILE NO. 55/204, AND THE 1929 TIE SHOWN ON B. P. R. ROAD PLAT, SHEET 2 OF PROJECT NO. 5-6.
5	824,298.99 1,041,983.59	CALCULATED CORNER
6	824,297.81 1,042,010.86	CALCULATED CORNER
7	822,850.03 1,041,792.54	I SET FLUSH A 2 in. X 3/8 in. CONCRETE FILLED GALVANIZED IRON PIPE WITH 3 in. BRASS CAP FULLY STAMPED. (FN, PG. 7)
8	822,841.46 1,041,906.27	CALCULATED CORNER
9	821,501.26 1,041,835.16	CALCULATED CORNER
10	821,597.82 1,040,568.87	CALCULATED CORNER
11	820,830.40 1,040,924.89	I SET 32 in. IN THE GROUND A 2 in. X 3/8 in. CONCRETE FILLED GALVANIZED IRON PIPE WITH 3 in. BRASS CAP FULLY STAMPED, FROM WHICH I SET TWO BEARING TREES: 14 in. CEDAR BEARS N. 80° E. 14.2 ft. TO FACE SCRIBED "BT", 24 in. HEMLOCK BEARS N. 40° W. 2.7 ft. TO FACE SCRIBED "BT" (FN, PG. 10)
11-A	821,451.66 1,040,870.10	FOUND B. P. R. MONUMENT NO. 5-6-37. IT IS A STAMPED BRASS CAP IN CONCRETE CYLINDER. (SEE COUNTY SURVEY FILE NO. 55/204.)
12	820,513.38 1,040,253.32	FOUND B. P. R. MONUMENT NO. 5-6-35. IT IS A STAMPED BRASS CAP IN CONCRETE CYLINDER. (SEE COUNTY SURVEY FILE NO. 55/204.)
13	818,937.62 1,039,448.53	FOUND B. P. R. MONUMENT NO. 5-6-30. IT IS A STAMPED BRASS CAP IN CONCRETE CYLINDER. (SEE COUNTY SURVEY FILE NO. 55/204.)
14	818,890.92 1,040,411.69	I SET FLUSH A 2 in. X 3/8 in. CONCRETE FILLED GALVANIZED IRON PIPE WITH 3 in. BRASS CAP FULLY STAMPED FROM WHICH I SET TWO BEARING TREES: 24 in. SPRUCE BEARS N. 61 1/2° E. 15.0 ft. TO FACE SCRIBED "W 1/16 S 4 BT". 12 in. SPRUCE BEARS N. 63° E. 18.5 ft. TO FACE SCRIBED "W 1/16 S 4 BT". (FN, PG. 9)
15	818,805.55 1,041,692.14	I FOUND THE 1 1/2 in. IRON PIPE SET BY W. G. CORBITT IN APRIL 1943, FROM WHICH BOTH ORIGINAL U.S. BEARING TREES BEAR AS FOLLOWS: 60 in. SPRUCE STUMP BEARS N. 83° W. 25.3 ft. TO OLD FACE WITH SPIKE, NO SCRIBING VISIBLE. 60 in. SPRUCE STUMP BEARS S. 83° E. 21.7 ft. TO FACE WITH SCRIBING VISIBLE. I REMOVED CORBITT'S IRON PIPE AND IN ITS PLACE SET FLUSH A 2 in. X 3/8 in. CONCRETE FILLED GALVANIZED IRON PIPE WITH 3 in. BRASS CAP FULLY STAMPED FROM WHICH I SET TWO NEW BEARING TREES: 18 in. SPRUCE BEARS N. 13° E. 19.4 ft. TO FACE SCRIBED "1/4 S 4 BT". 18 in. SPRUCE BEARS S. 4° E. 13.0 ft. TO FACE SCRIBED "1/4 S 4 BT". (FN, PG. 8; C.Z.C. BK. 1, PG. 43)
16	824,242.47 1,043,288.73	CALCULATED CORNER
17	822,742.27 1,043,223.73	I SET FLUSH WITH GROUND A 2 in. X 3/8 in. CONCRETE FILLED GALVANIZED IRON PIPE WITH 3 in. BRASS CAP FULLY STAMPED, FROM WHICH I SET TWO BEARING TREES: 20 in. SPRUCE BEARS S. 39° E. 13.8 ft. TO FACE SCRIBED "NE 1/16 S 4 BT". 22 in. SPRUCE BEARS N. 69° E. 18.5 ft. TO FACE SCRIBED "NE 1/16 S 4 BT". (FN, PG. 6)
18	821,410.27 1,043,166.03	I SET FLUSH A 2 in. X 3/8 in. CONCRETE FILLED GALVANIZED IRON PIPE WITH 3 in. BRASS CAP FULLY STAMPED, FROM WHICH I SET TWO BEARING TREES: 14 in. HEMLOCK BEARS N. 74° E. 22.7 ft. TO FACE SCRIBED "CE 1/16 S 4 BT". 14 in. HEMLOCK BEARS N. 44° W. 12.5 ft. TO FACE SCRIBED "CE 1/16 S 4 BT". (FN, PG. 5)
19	824,196.52 1,044,580.81	I FOUND BOTH ORIGINAL SPRUCE BEARING TREES. THE SOUTH WEST BEARING TREE IS NOW A ROTTEN SNAG WITH SCRIBING VISIBLE. THE SOUTH EAST BEARING TREE IS A ROTTEN STUMP. AT RECORD DISTANCES FROM CENTERS OF SAID BEARING TREES I SET FLUSH A 2 in. X 3/8 in. CONCRETE FILLED GALVANIZED IRON PIPE WITH 3 in. BRASS CAP FULLY STAMPED, FROM WHICH I SET TWO NEW BEARING TREES: 24 in. SPRUCE BEARS S. 35° W. 39.1 ft. TO FACE SCRIBED "T 20 S R 12 W S 4 BT", A 24 in. SPRUCE BEARS S. 76° E. 26.6 ft. TO FACE SCRIBED "T 20 S R 12 W S 3 BT". (FN, PG. 3)
20	823,886.44 1,044,430.48	I FOUND SILT COOS LOOKOUT TOWER TRIANGULATION STATION. IT IS A U. S. D. A. FOREST SERVICE DISK STAMPED SILT COOS 1936. THIS STATION WAS USED AS THE BASIS OF COORDINATES FOR THIS SURVEY.
21	822,645.08 1,044,514.72	CALCULATED CORNER
22	821,321.98 1,044,458.05	I FOUND 1 1/2 in. X 27 in. IRON PIPE SET BY KRUGER IN 1941, FROM WHICH: THE ORIGINAL 10 in. HEMLOCK BEARING TREE, NOW A STUMP, BEARS S. 10° E. 92 ft. TO FACE WITH PORTION OF SCRIBING VISIBLE. CORBITT'S 22 in. FIR SNAG BEARS N. 41° W. 27.8 ft. TO NAIL IN FACE. I REMOVED KRUGER'S IRON PIPE AND IN ITS PLACE SET FLUSH A 2 in. X 3/8 in. CONCRETE FILLED GALVANIZED IRON PIPE WITH 3 in. BRASS CAP FULLY STAMPED, FROM WHICH I SET TWO NEW BEARING TREES: 8 in. HEMLOCK BEARS S. 62° W. 3.6 ft. TO FACE SCRIBED "1/4 S 4 BT". 13 in. HEMLOCK BEARS S. 51° E. 27.35 ft. TO FACE SCRIBED "1/4 S 3 BT". (FN, PG. 4, C.Z.C. BK. 1, PG. 33)
23	824,183.59 1,044,648.38	I FOUND THREE OF THE ORIGINAL FOUR BEARING TREES SET BY HARVEY GORDON IN 1858. MEASURING FROM THEIR CENTERS I SET FLUSH A 2 in. X 3/8 in. CONCRETE FILLED GALVANIZED IRON PIPE WITH 3 in. BRASS CAP FULLY STAMPED, FROM WHICH THE CENTERS OF THE ORIGINAL BEARING TREES BEAR AS FOLLOWS: 70 in. SPRUCE STUMP BEARS N. 71 1/2° E. 32.6 ft. SCRIBING VISIBLE. 50 in. SPRUCE STUMP BEARS S. 46 1/4° E. 52.6 ft. RECONSTRUCTED POSITION OF 50 in. SPRUCE WINDFALL (HEMLOCK IN U.S. NOTES) BEARS N. 49 1/2° W. 53 ft. I SET TWO NEW BEARING TREES: 24 in. TWIN SPRUCE BEARS N. 43° E. 14.7 ft. TO FACE SCRIBED "T 19 S R 12 W S 3 BT". 22 in. SPRUCE BEARS N. 7° W. 24.9 ft. TO FACE SCRIBED "T 19 S R 12 W S 3 BT". (FN, PG. 12)

LEGEND

- TAGGED AND BLAZED PROPERTY LINE
- CORNERS FOUND
- CORNERS SET
- CORNERS CALCULATED
- FN. PG. REFERS TO SPECIFIC PAGES OF MY FIELD NOTES ON THIS SURVEY, SAID NOTES ARE RECORDED IN THE LANE AND DOUGLAS COUNTY SURVEY RECORDS.
- C.Z.C. REFERS TO CROWN ZELLERBACH CORPORATION'S FIELD NOTES BY W.G. CORBITT. SAID NOTES ARE RECORDED IN THE LANE AND DOUGLAS COUNTY SURVEY RECORDS.
- C.S. FILE NO. REFERS TO DOUGLAS COUNTY SURVEY NOTES BY FILE NUMBER.

SURVEYOR'S CERTIFICATE

I, KARL F. FOESTE, A REGISTERED LAND SURVEYOR OF THE STATE OF OREGON, HEREBY CERTIFY THAT I HAVE PROPERLY SUBDIVIDED SECTION 4 AS SHOWN ON THIS PLAT, AND THAT SAID SUBDIVISION WAS DONE IN ACCORDANCE WITH O.R.S. FOR THE SURVEY OF OREGON LANDS, AND THE B.L.M. MANUAL FOR THE SURVEY OF PUBLIC LANDS OF THE UNITED STATES.

REGISTERED PROFESSIONAL LAND SURVEYOR
 OREGON
 JULY 12, 1968
 KARL F. FOESTE
 0849

DRAWN BY L.S. RAKE

COUNTY SURVEYORS FILE DATA
 DO NOT REMOVE FROM OFFICE