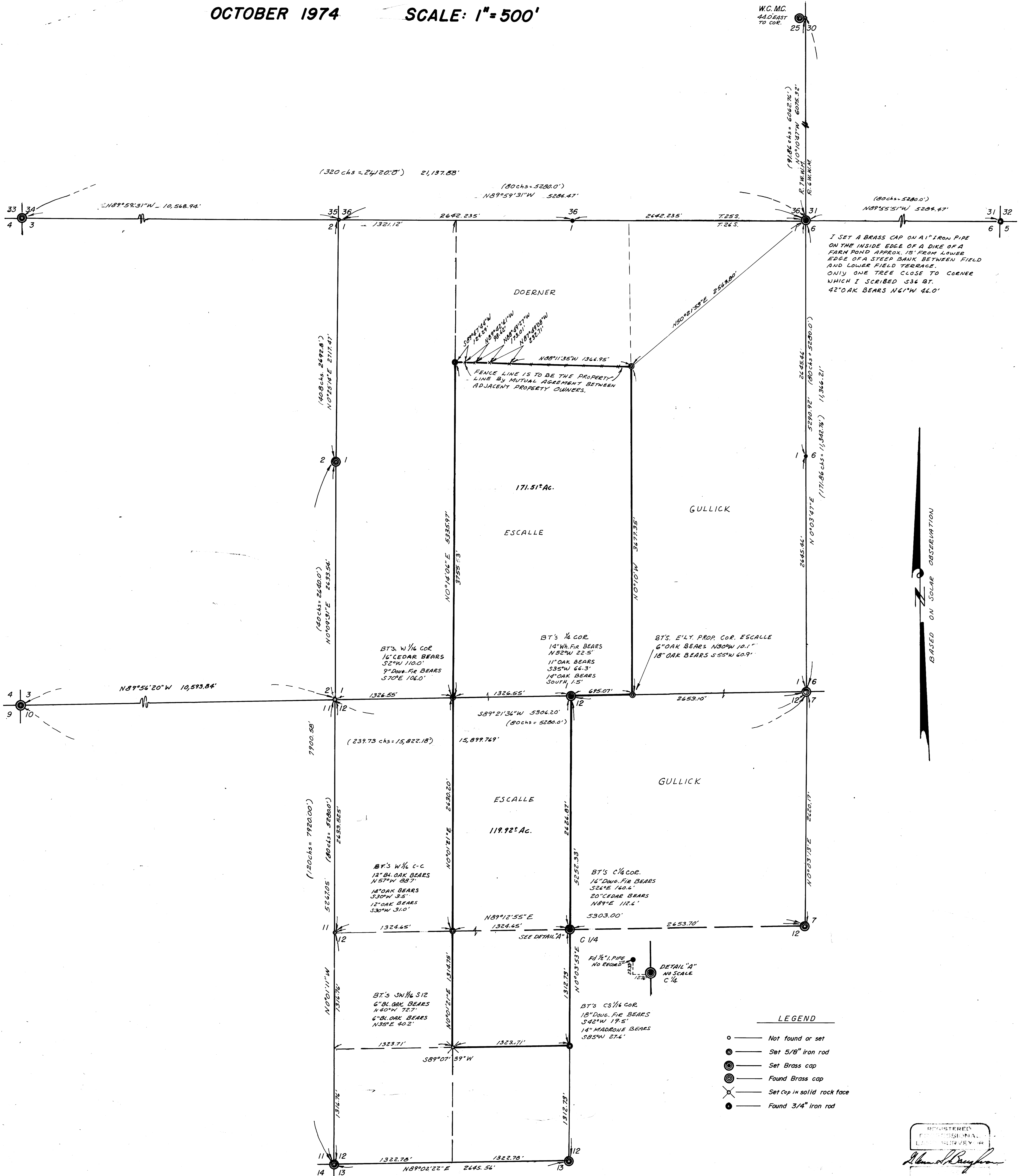


SURVEY TO SET PROPERTY CORNERS IN SECTIONS 1 & 12, T.26S. R.7W.W.M. FOR: BILL J. ESCALLE BY: BAUGHMAN SURVEYING SERVICE

FILED
RECEIVED 27
NOV 18 1974
COUNTY SURVEYOR
DOUGLAS COUNTY, ORE
M

M 49-76

OCTOBER 1974 SCALE: 1" = 500'



REGISTERED
PROFESSIONAL
LAND SURVEYOR
Alvin P. Baughman
1974

M 49-76