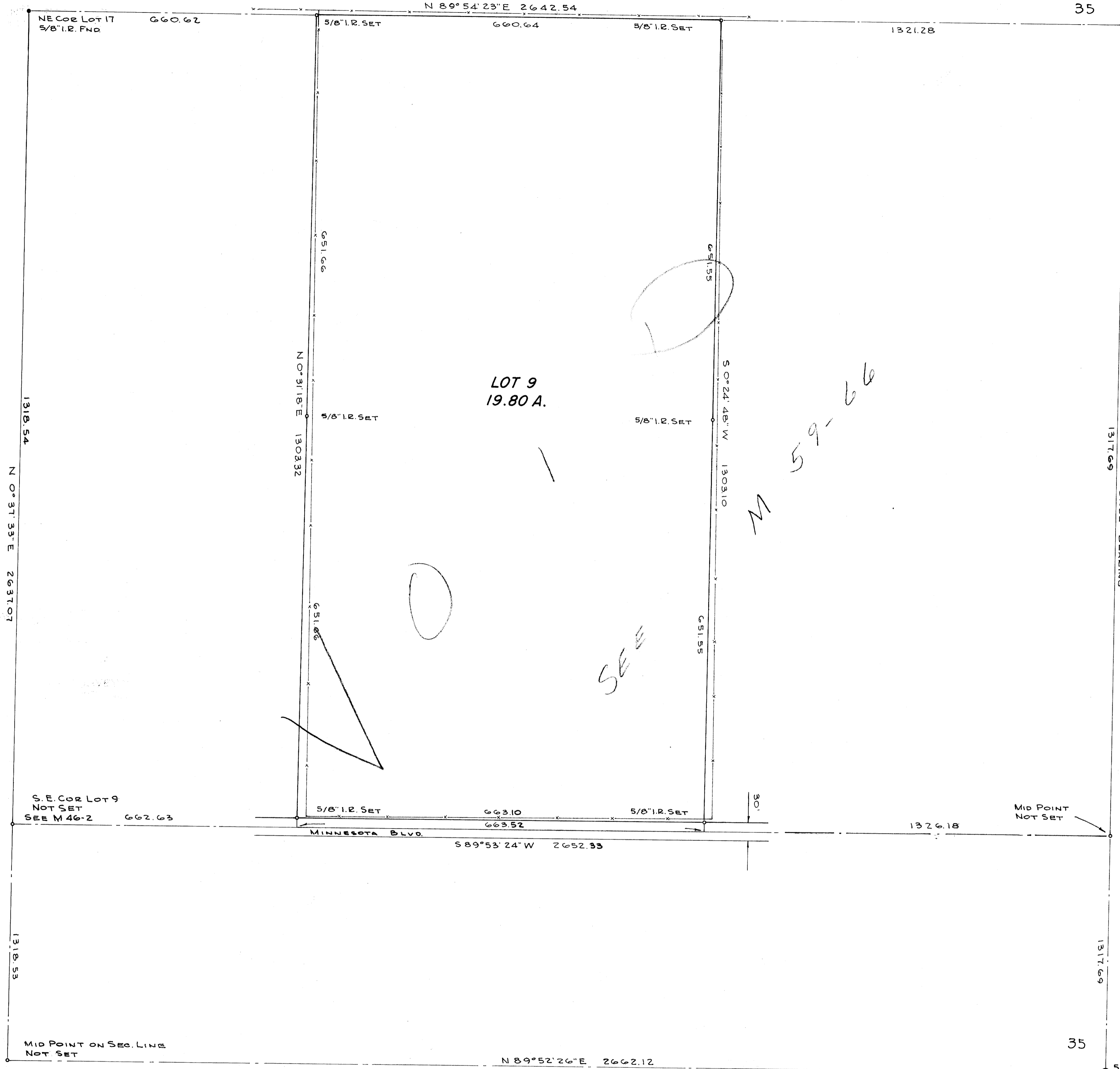


COUNTY SURVEYORS FILE DATA  
DO NOT REMOVE FROM OFFICE

WIT. COR.  
BRASS CAP

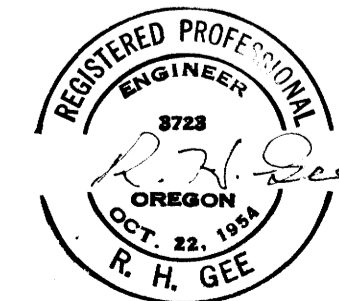
35 60'  
1/4 COR.  
36



FILED 2  
RECEIVED *m*  
APR 15 1974

COUNTY SURVEYOR  
DOUGLAS COUNTY, ORE.  
*m*

SURVEY TO DETERMINE BOUNDARIES OF  
LOT 9, EDEN ORCHARDS  
SECTION 35, T. 26 S., R. 7 W., W.M.  
SURVEYED FOR EMMA LEAH HANDY  
SURVEYED BY R. H. GEE - APRIL, 1974  
SCALE 1" = 100'



COUNTY SURVEYORS FILE DATA  
DO NOT REMOVE FROM OFFICE