

SURVEY OF IMPROVED DAIRY PROPERTY
 IN BLOCK 88, 2ND SOUTHERN ADDITION TO ROSEBURG
 SEC. 24, T27S, R6W, W.M.

ENGINEER - W. S. BARNES

FEB. 1974
 SCALE 1" = 16'

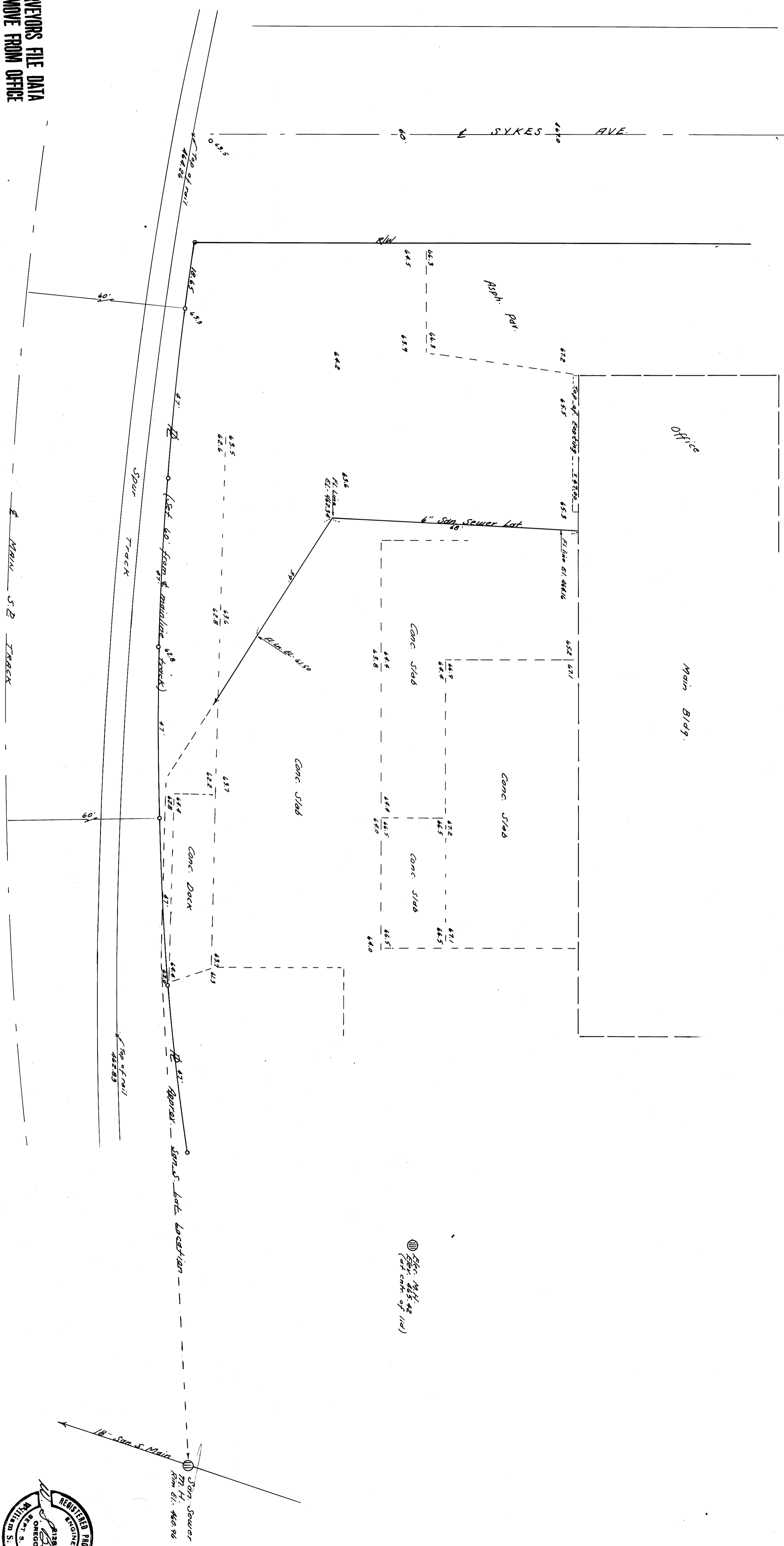
COUNTY SURVEYORS FILE DATA
 DO NOT REMOVE FROM OFFICE

FILED 2
 RECEIVED (JD)
 APR 2 1974

COUNTY SURVEYOR
 DOUGLAS COUNTY, ORE.
 M. J.

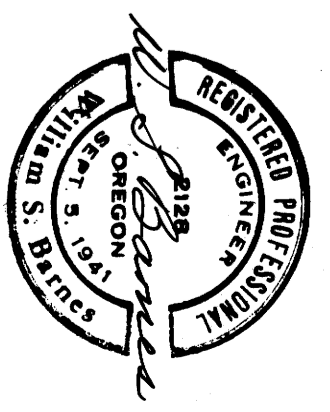
0 3/4" rad
 Intersection Bunks & Short Str.

0 Denotes 3/8" iron rods set.



① Elev. 465.42
 (at center of 18')

COUNTY SURVEYORS FILE DATA
 DO NOT REMOVE FROM OFFICE



MAP FILE M-49-61