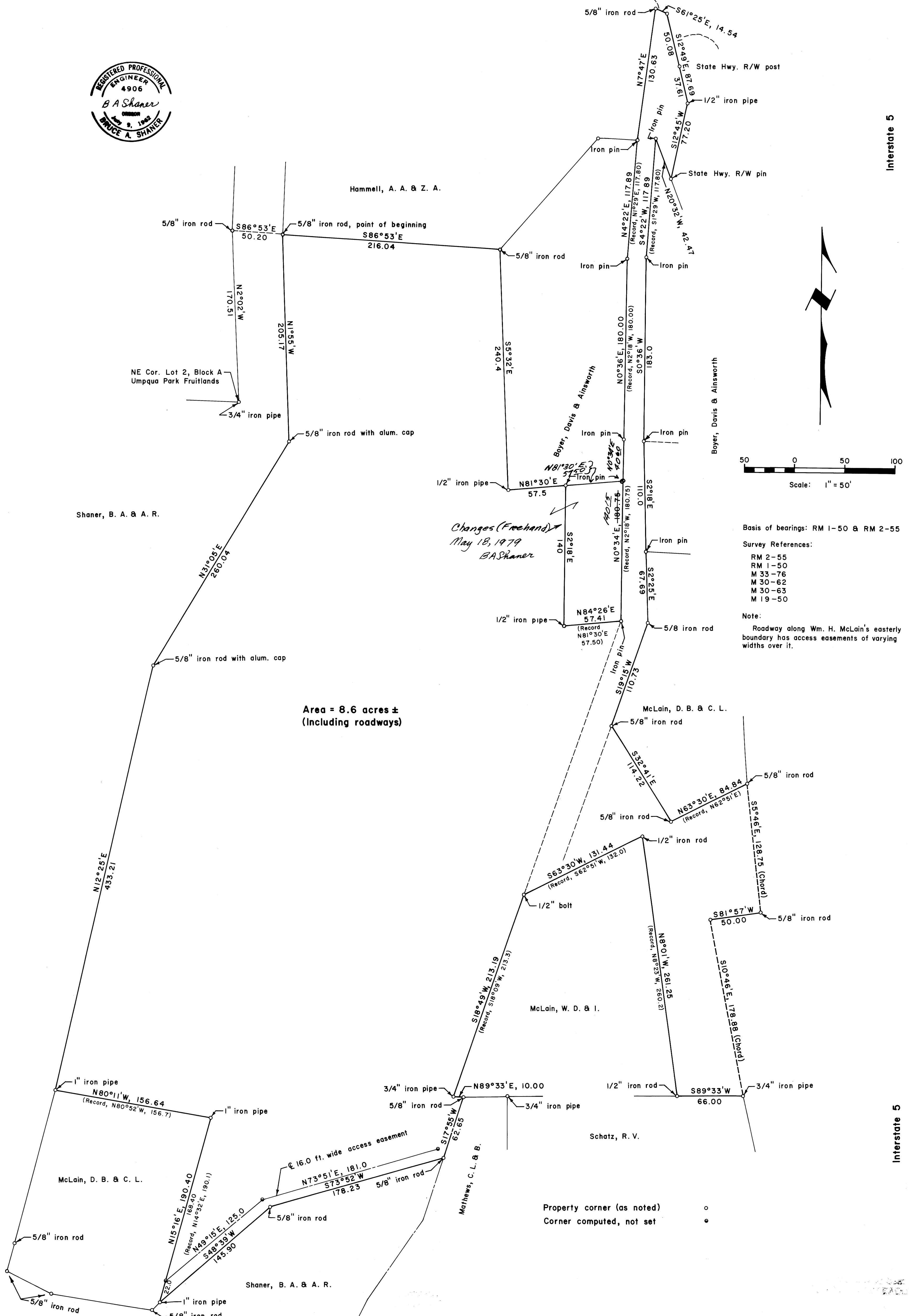
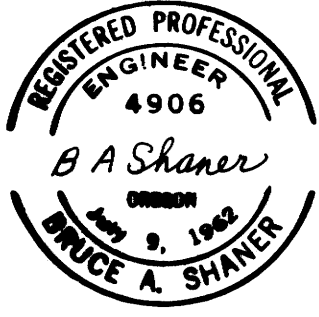


WM. H. McLAIN PROPERTY SURVEYS
 IN LOTS 1 & 2, BLOCK A, UMPQUA PARK FRUITLANDS
 SEC. 35, T. 27 S., R. 6 W., W. M.
 Compiled for Wm. H. McLain
 Compiled by Shaner Engineering
 February 28, 1974

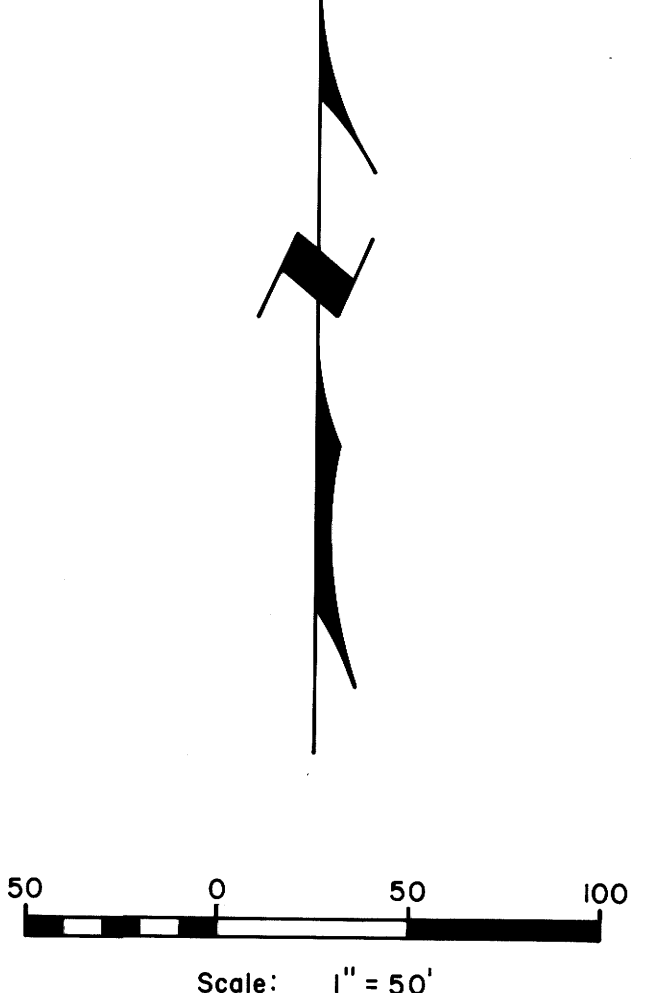
FILED
 RECEIVED
 MAR 5 1974
 COUNTY SURVEYOR
 DOUGLAS COUNTY, ORE.

COUNTY SURVEYORS FILE DATA
 DO NOT REMOVE FROM OFFICE



Area = 8.6 acres ±
 (Including roadways)

Changes (Freehand)
 May 18, 1979
 B.A. Shaner



Basis of bearings: RM 1-50 & RM 2-55
 Survey References:
 RM 2-55
 RM 1-50
 M 33-76
 M 30-62
 M 30-63
 M 19-50
 Note:
 Roadway along Wm. H. McLain's easterly boundary has access easements of varying widths over it.

Property corner (as noted) ○
 Corner computed, not set ●

COUNTY SURVEYORS FILE DATA
 DO NOT REMOVE FROM OFFICE

MAP FILE M 49-58

MAP FILE M 49-58