

COUNTY SURVEYORS FILE DATA
DO NOT REMOVE FROM OFFICE

SURVEY TO ESTABLISH PROPERTY CORNERS IN SEC. 27, T30S, R5W. W.M.

SURVEYED FOR - EDWARD SEEGER
SURVEYED BY - W. S. BARNES

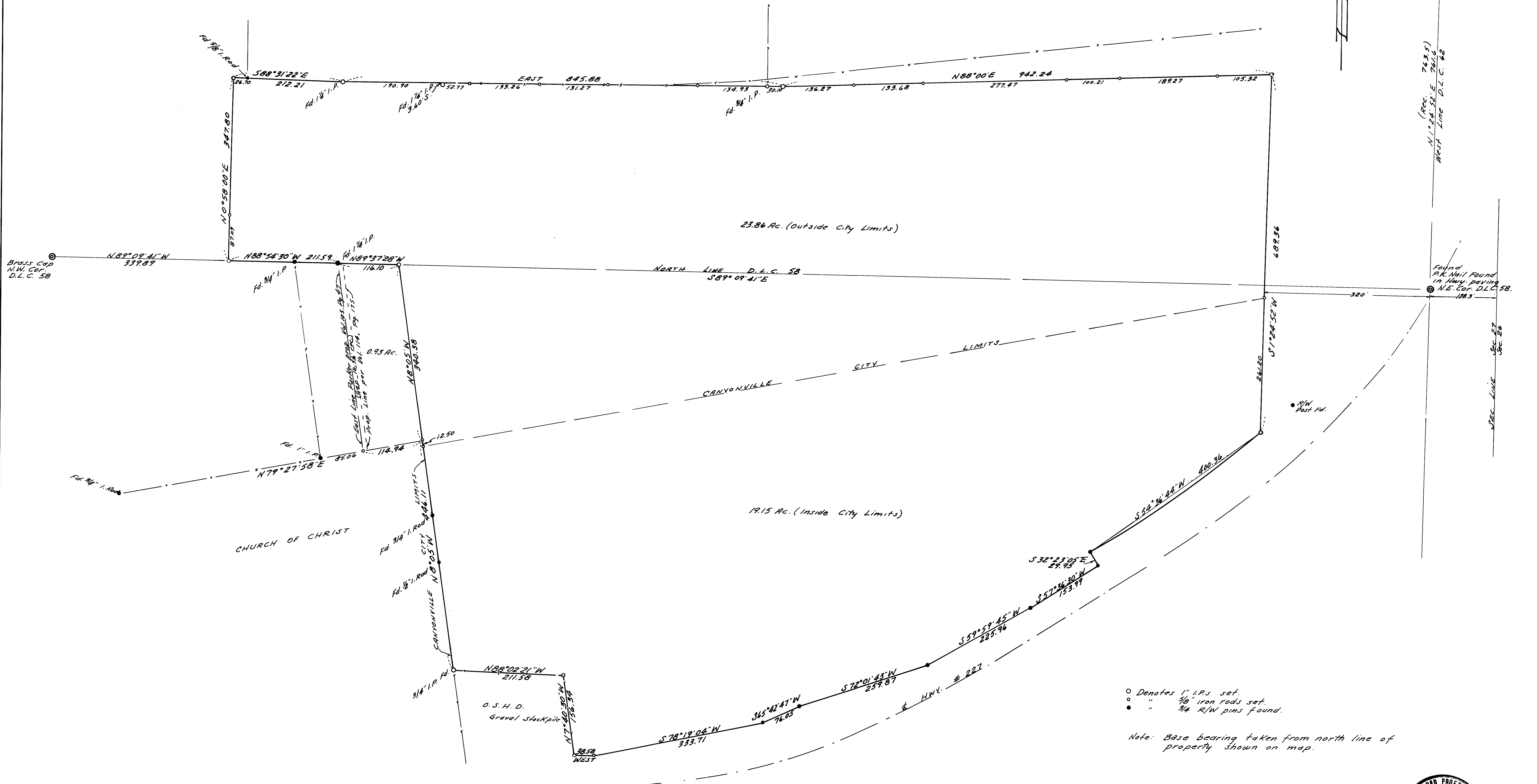
JAN. 1974
SCALE 1" = 100'

FILED /
RECEIVED *Ad*

FEB 19 1974

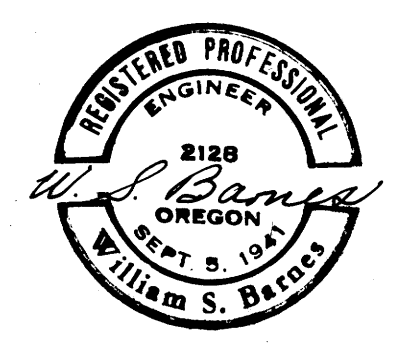
COUNTY SURVEYOR
DOUGLAS COUNTY, ORE.

Fd 1" I.P.



- Denotes 1" I.P.s set.
- " 3/8" iron rods set.
- " 3/4" R/W pins found.

Note: Base bearing taken from north line of property shown on map.



COUNTY SURVEYORS FILE DATA
DO NOT REMOVE FROM OFFICE

MAP FILE 2128 - 556

MAP FILE 2128 - 556