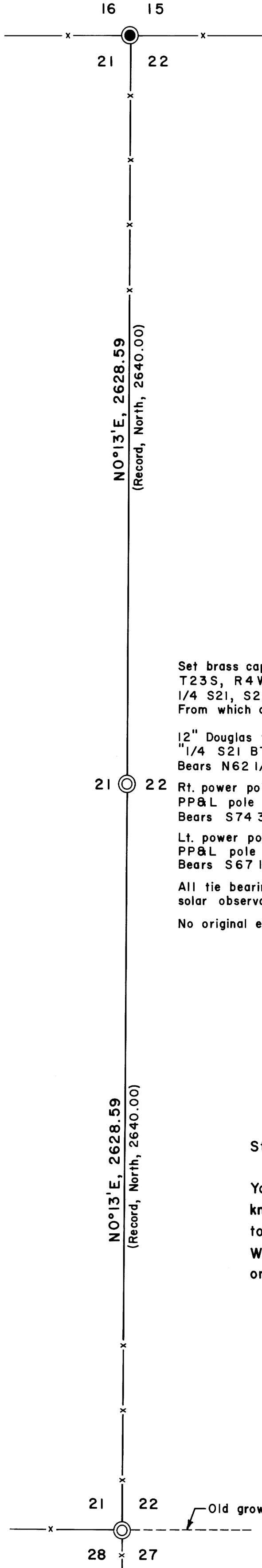


Fd. geared axle for corner
to sections 15, 16, 21 & 22,
T. 23 S., R. 4 W., W. M.
From which a:
42" Douglas fir BT
Bark scribes vis.
Bears S34°W, 126.7 ft.
14" white oak BT
Face grown over
Bears N14°W, 49.8 ft.
16" black oak BT
Face grown over
Bears N21°E, 51.5 ft.
No original BT's found.



Set brass cap mkd.
T23S, R4W, WM
1/4 S21, S22 1974
From which a:
12" Douglas fir, 1 scribed
1/4 S21 BT
Bears N62 1/2°W, 52.6 ft
Rt. power pole, structure 1/76
PP&L pole No. 6517
Bears S74 3/4°E, 32.3 ft.
Lt. power pole, structure 1/76
PP&L pole No. 6504
Bears S67 1/2°E, 48.9 ft.
All tie bearings based on
solar observation.
No original evidence found.

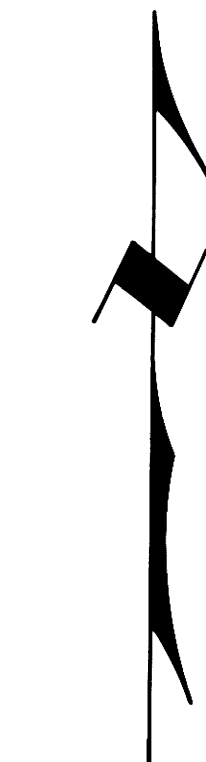
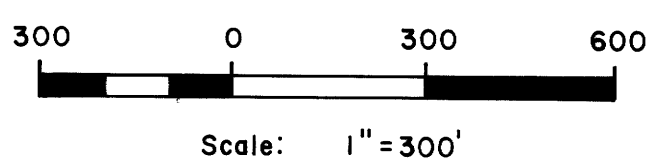
Statement:
I, Kathryn M. Howard, Howard Road
Yoncalla, Oregon, hereby state that, to my
knowledge, the replaced section corner common
to Sections 21, 22, 27, 28, T. 23 S., R. 4 W.,
W. M., occupies the same position as the
original corner.

Kathryn M. Howard
Kathryn M. Howard

At the section corner common to
sections 21, 22, 27 & 28, T. 23 S.,
R. 4 W., W. M., which lies at the
intersection of a very old North-
South fence line, and an extension
of a very old fence line from
the West, and an old growth
timber cutting line to the East,
which point of intersection, according
to witness Kathryn M. Howard, is
to her knowledge the location of
the original section corner.
Set brass cap mkd.
T23S, R4W, WM
S21, S22, S28 S27 1974
From which a:
8" Douglas fir, 1 scribed
"T23S, R4W S21 BT"
Bears N62°W, 45.9 ft.
28" Douglas fir, 1 scribed
"T23S, R4W S22 BT"
Bears N88°E, 13.0 ft.
28" Douglas fir, 1 scribed
"T23S, R4W S27 BT"
Bears S50°E, 18.7 ft.
6" Douglas fir, 1 scribed,
"T23S, R4W S28 BT"
Bears S66°W, 43.1 ft.
No original BT's found.

REESTABLISHMENT OF 1/4 COR. COMMON TO
SECS. 21 & 22, T. 23 S., R. 4 W., W. M.
For: Pacific Power & Light Co.
Portland, Oregon

By: Shaner Engineering, Roseburg, Oregon
February 13, 1974



Bearings based on
solar observation.

LEGEND

- Corner found
- Corner set
- Fence

