

COUNTY SURVEYORS FILE DATA
DO NOT REMOVE FROM OFFICE

FILED
RECEIVED
FEB 5 1974
COUNTY SURVEYOR
DOUGLAS COUNTY, ORE

Set brass cap mkd.
T30S, R9W, WM
1/4S S7, S18 1973
From which a:
30" fir stump, original BT
Old face badly burned
Bears N15°E, 32.7 ft.
18" fir snag, original BT
Scribe "1" vis.
Bears S87 3/4°W, 14.7 ft.
10" cedar, 1 scribed
"1/4 S7 BT"
Bears N22 1/2°W, 18.8 ft.
10" Douglas fir, 1 scribed
"1/4 S18 BT"
Bears S31 1/2°W, 44.2 ft.
14" fir, marked as a corner
tree, now gone.

Set brass cap mkd.
T30S, R9W, WM
S18 CW1/16 1974
From which a:
12" Douglas fir, 1 scribed
"CW1/16 S18 BT"
Bears S1°E, 13.7 ft.
14" Douglas fir, 1 scribed
"CW1/16 S18 BT"
Bears N74°W, 15.5 ft.

Set brass cap mkd.
T30S, R9W, WM
S18 C1/4S 1974
From which a:
6" Douglas fir, 1 scribed
"C1/4 S18 BT"
Bears N48°E, 35.5 ft.
6" Douglas fir, 1 scribed
"C1/4 S18 BT"
Bears S61°E, 37.2 ft.

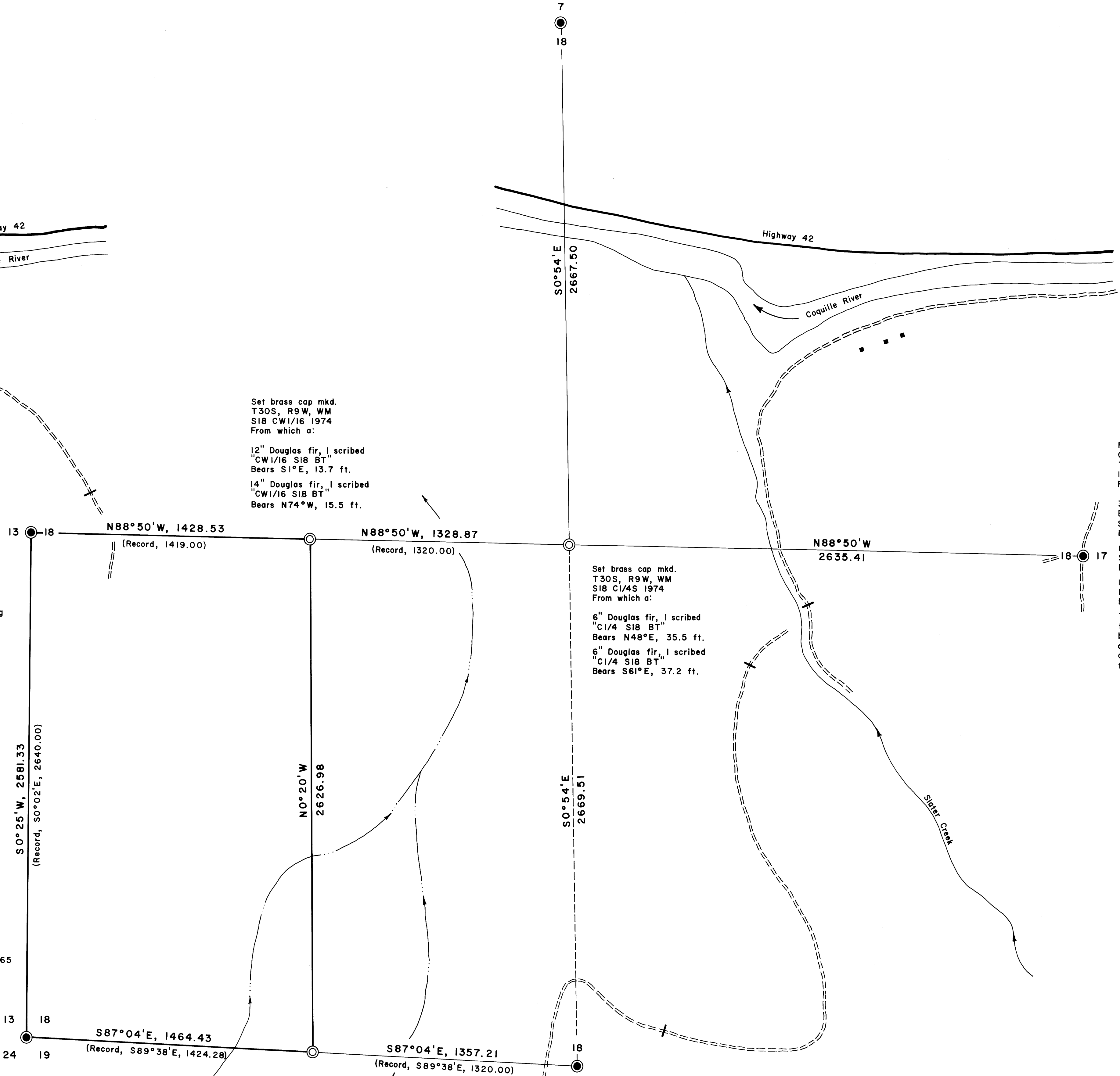
Fd. brass cap mkd.
County Surveyor's Office
T30S, R9W
1/4 S18, S17 1965
From which a:
30" Douglas fir stump, original BT
Badly burned and rotting
Scribes "1/4 S" vis.
Bears S66°E, 23.4 ft.
8" cedar BT
Scribes vis.
Bears S82°E, 45.8 ft.
14" Douglas fir BT
Face grown over
Bears N37°W, 50.7 ft.
This corner is a jct. of
three old dirt roads, one
bears South, one bears North,
and one bears West. The
corner lies in the middle of
the North-South road.

Fd. brass cap mkd.
County Surveyor's Office
1/4 T30S, R10W, S13
T30S, R9W, S18 1965
From which a:
22" Douglas fir BT
With old face
Bears N26 1/2°W, 33.9 ft.
(Record 34.3 ft.)
19" Douglas fir BT
Bears N5°W, 42.4 ft.
8" Douglas fir BT
Bears S84°E, 8.0 ft.
(Record N87°E)
14" x14" x10" stone with
1/4 on West face set along
side of the brass cap.

Fd. brass cap mkd.
County Surveyor's Office
T30S, R10W, S13, S24
T30S, R9W, S18, S19 1965
From which a:
19" Douglas fir BT
Face grown over
Bears N47°E, 14.0 ft.
21" Douglas fir BT
Face grown over
Bears N38°W, 16.3 ft.
20" cedar BT
Scribes partially vis.
Bears S48°W, 7.0 ft.
8" hemlock BT
Scribes partially vis.
Bears S7°E, 13.0 ft.
The section corner lies on
the top of a rocky ridge
running North-South.

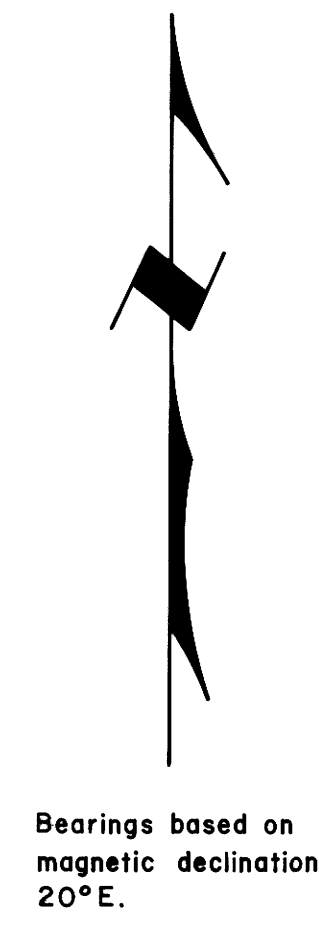
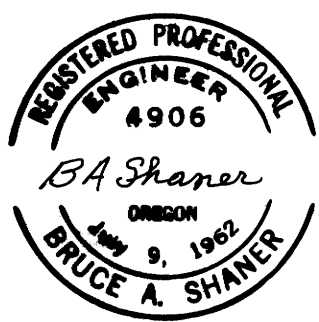
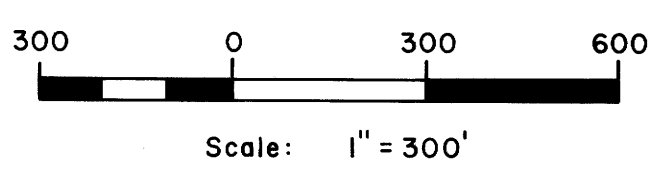
Set brass cap mkd.
T30S, R9W, WM
W1/16 S18, S19 1974
From which a:
12" Douglas fir, 1 scribed
"W1/16 S18 BT"
Bears S53°W, 6.6 ft.
10" Douglas fir, 1 scribed
"W1/16 S18 BT"
Bears N67°E, 19.4 ft.

Fd. brass cap mkd.
County Surveyor's Office
T30S, R9W
1/4 S18, S19 1965
From which a:
20" cedar stump, original BT
Scribes "1/4 S" vis.
Bears N37 1/2°E, 11.5 ft.
10" white fir stump, original BT
Stump completely rotten
Bears S1°E, 12.8 ft.
8" cedar BT
Scribes partially vis.
Bears N22°E, 12.7 ft.
10" laurel BT
Scribes vis.
Bears S3°E, 21.4 ft.
1" iron pin set along side of
the brass cap.



PROPERTY LINE SURVEY OF
LOTS 3 & 4, SEC. 18, T.30 S., R.9 W., W. M.
For: Moore Mill and Lumber Co.
Bandon, Oregon

By: Shaner Engineering, Roseburg, Oregon
February 4, 1974



LEGEND

| | |
|---|-----------|
| Corner found | ● |
| Corner set | ○ |
| True line, marked with blazes and red paint | — |
| Random line only, no true line marked | - - - - |
| Line computed, not run | — · — · — |
| Paved road | —+—+—+— |
| Dirt road and blocked | —+—+—+—+— |
| House | ■ |

COUNTY SURVEYORS FILE DATA
DO NOT REMOVE FROM OFFICE