

FILED  
RECEIVED  
JAN 16 1974  
COUNTY SURVEYOR  
DOUGLAS COUNTY, OREG.

Fd. brass cap mkd.  
County Surveyor's Office  
T29S, R9W, S35  
T30S, R9W, S2  
1959 BLM 1966  
From which a:  
40" Douglas fir original BT  
Bark scribes vis.  
Bears N67°E, 10.6 ft.  
12" white fir BT  
Face vis.  
Bears N31°E, 16.9 ft.  
16" Douglas fir BT  
Face vis.  
Bears S15°W, 37.8 ft.

Fd. brass cap mkd.  
County Surveyor's Office  
T29S, R9W, S35, S56  
T30S, R9W, S2, S1  
1959 BLM 1966  
From which a:  
8" Douglas fir, Boyer's BT  
Now rotten stump  
Partial scribes vis.  
Bears N42°W, 2.0 ft.  
8" Douglas fir BT  
Face vis.  
Bears S75°W, 30.4 ft.  
6" Douglas fir BT  
Face vis.  
Bears N28°E, 66.7 ft.  
28" cedar BT  
Scribes vis.  
Bears S66°E, 124.7 ft.

Fd. brass cap mkd.  
County Surveyor's Office  
T30S, R9W  
S3, S2 1973  
From which a:  
30" Douglas fir burned stump BT  
Bears N34°W, 29.4 ft.  
RR spike driven into top of stump  
through burnt BT tag  
28" Douglas fir burned stump BT  
Bears N7°E, 32.0 ft.  
RR spike driven into top of stump  
through burnt BT tag  
10" Douglas fir BT  
Scribes vis., tree now down  
Bears S75°E, 27.0 ft.  
10" cedar, 1 scribed  
"1/4 S2 BT"  
Bears N40 1/2°E, 87.5 ft.  
12" cedar, 1 scribed  
"1/4 S3 BT"  
Bears N88 1/2°W, 122.6 ft.

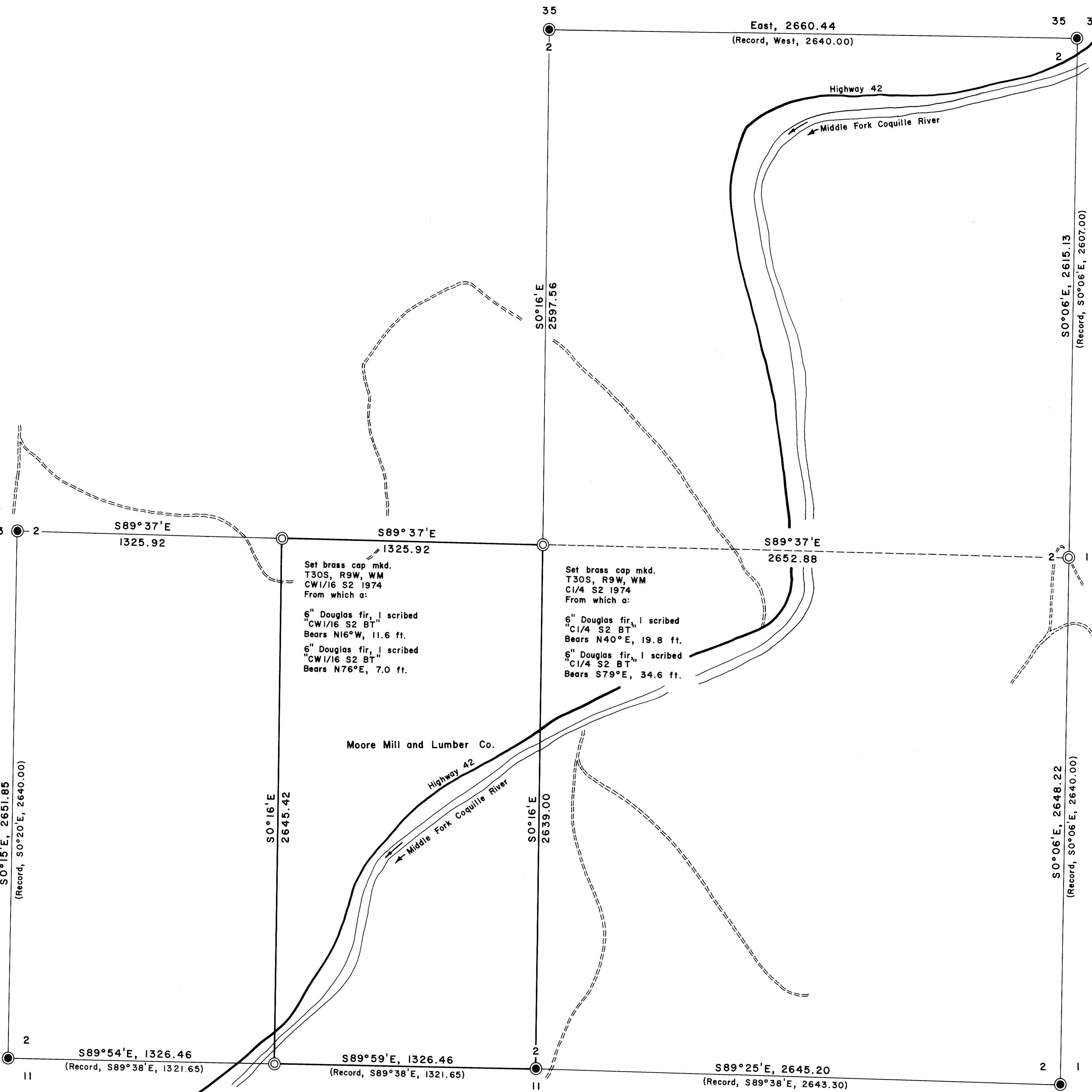
Set brass cap mkd.  
T30S, R9W, WM  
1/4 S2, S1 1974  
From which a:  
24" cedar stump, 1 scribed  
"1/4 S2 BT"  
Bears N13°W, 66.7 ft.  
36" Douglas fir stump, 1 scribed  
"1/4 S1 BT"  
Bears S18°E, 94.0 ft.  
This corner is on a slide area  
and may move. The corner  
also lies on an old road. No  
original evidence found.

Set brass cap mkd.  
T30S, R9W, WM  
S3, S2, S10, S11 1974  
From which a:  
30" cedar original BT  
Down and burned with old face  
Bears S12°E, 77.2 ft.  
Stump hole for  
30" fir original BT  
Bears S35°W, 124.7 ft.  
Corner area has been heavily  
burned several times, no  
trees are within limits so I  
scribed an "X" on rocks as  
follows:  
X on 5'x5'x5' rock  
Bears S54°W, 7.6 ft. to the X  
X on 4'x4'x3' rock  
Bears N47°W, 6.3 ft. to the X  
X on 4'x4'x6' rock  
Bears N16°E, 36.7 ft. to the X  
X on 5'x5'x8' rock  
Bears S58°E, 11.0 ft. to the X

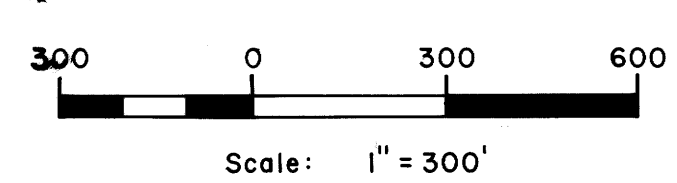
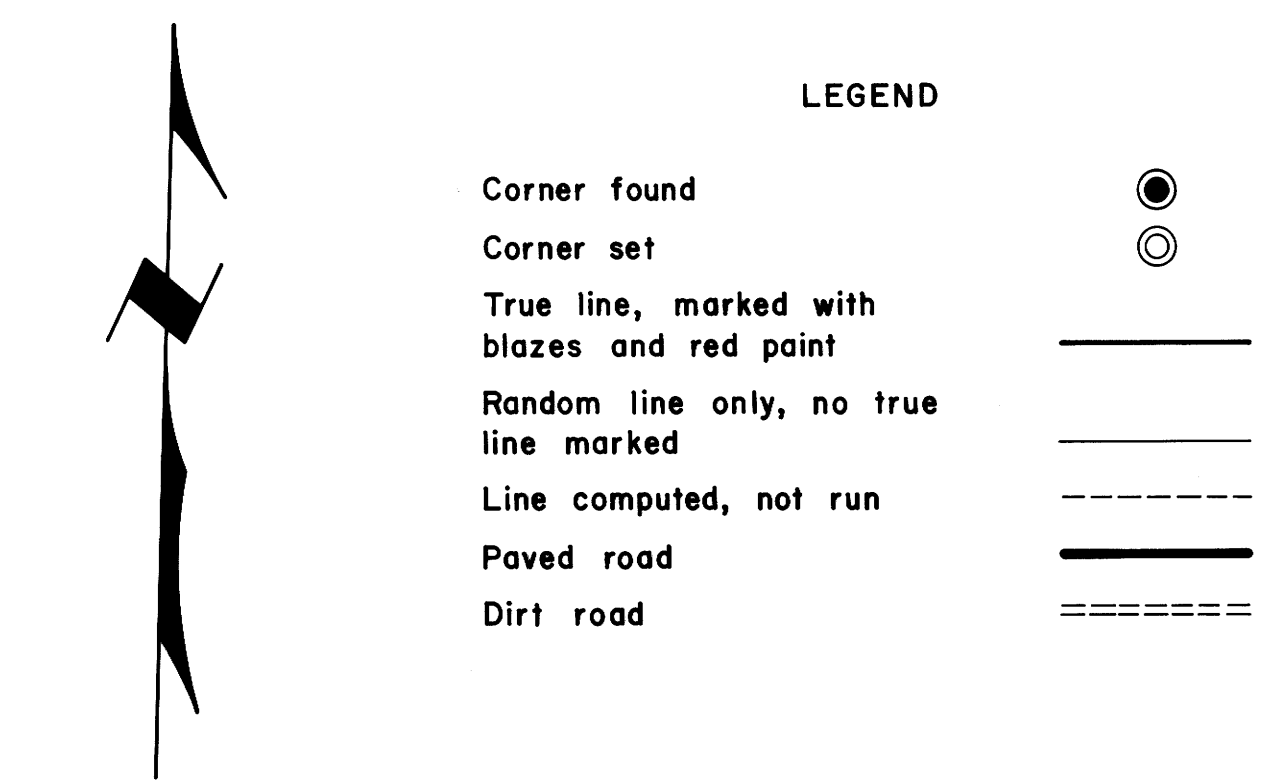
Fd. brass cap mkd.  
County Surveyor's Office  
T30S, R9W  
S2, S1, S11, S12 1958  
From which a:  
44" Douglas fir snag BT  
Scribes vis., face badly burned  
Bears N85°E, 18.0 ft.  
5" cedar snag BT  
Scribes vis.  
Bears N14°W, 31.5 ft.  
10" cedar BT  
Scribes vis.  
Bears N37 1/2°W, 184.7 ft.  
8" cedar snag probable BT  
Partial scribes vis. at bottom  
Upper face burned out  
Bears S69°E, 33.6 ft.

Set brass cap mkd.  
T30S, R9W, WM  
W1/16 S2, S11 1974  
From which a:  
40" Port Orford cedar stump, 1 scribed  
"W1/16 S11 BT"  
Bears S15°E, 36.0 ft.  
30" western red cedar, 1 scribed  
"W1/16 S2 BT"  
Bears N46°E, 96.5 ft.  
This corner lies on the  
South bank of the Middle  
Fork of the Coquille River.

Fd. brass cap mkd.  
County Surveyor's Office  
T30S, R9W  
1/4 S2, S11 1958  
From which a:  
24" cedar snag original BT  
Scribes partially vis.  
Bears N5°W, 27.7 ft.  
24" cedar BT  
Scribes partially vis.  
Bears N46°W, 13.2 ft.  
14" Douglas fir BT  
Face grown over  
Bears S10°E, 14.0 ft.



PROPERTY LINE SURVEY IN  
SECTION 2, T.30 S., R.9 W., W. M.  
For: Moore Mill and Lumber Co.  
Bandon, Oregon  
By: Shaner Engineering, Roseburg, Oregon  
January 12, 1974



Bearings based on  
record bearings of  
North and East lines.