

COUNTY SURVEYORS FILE DATA  
DO NOT REMOVE FROM OFFICE

RECEIVED 04  
JUN 2 1973  
COUNTY SURVEYOR  
CLATSOP COUNTY, OREGON

MAY 1973 1149-5

Fd. brass cap mkd.  
U. S. Cadastral Survey  
T 25 S, R 7 W, W M  
S 3, S 2, S 10, S 11, 1958  
Bureau of Land Management  
From which a:  
24" Douglas fir BT  
High stump with scribes vis.  
Bears N 39 1/2° E, 20.5 ft.  
(Record white fir)  
18" white fir BT  
Badly rotted stump with scribes vis.  
Bears S 10° E, 5.9 ft.  
15" white fir BT  
Badly rotted stump with scribes vis.  
Bears S 56° W, 38.6 ft.  
23" white fir BT  
Badly rotted stump with scribes vis.  
Bears N 56° W, 68.0 ft.  
I scribed a 36" Douglas fir stump  
"T 25 S, R 7 W, S 3 BT"  
Bears N 70 1/2° W, 83.3 ft. to face  
I scribed a 6" Douglas fir  
"T 25 S, R 7 W, S 11 BT"  
Bears S 77° E, 40.0 ft.  
I scribed a 10" white fir  
"T 25 S, R 7 W, S 10 BT"  
Bears S 3° W, 24.7 ft.

Fd. brass cap for the  
N 1/16, S 10, S 11 set by  
U. S. Cadastral Survey  
B. L. M. 1958  
From which a:  
12" white fir BT  
Face grown over  
Bears S 14 1/2° W, 62.0 ft.  
8" white fir BT  
Snag with scribes vis.  
Bears N 69 1/2° E, 34.0 ft.

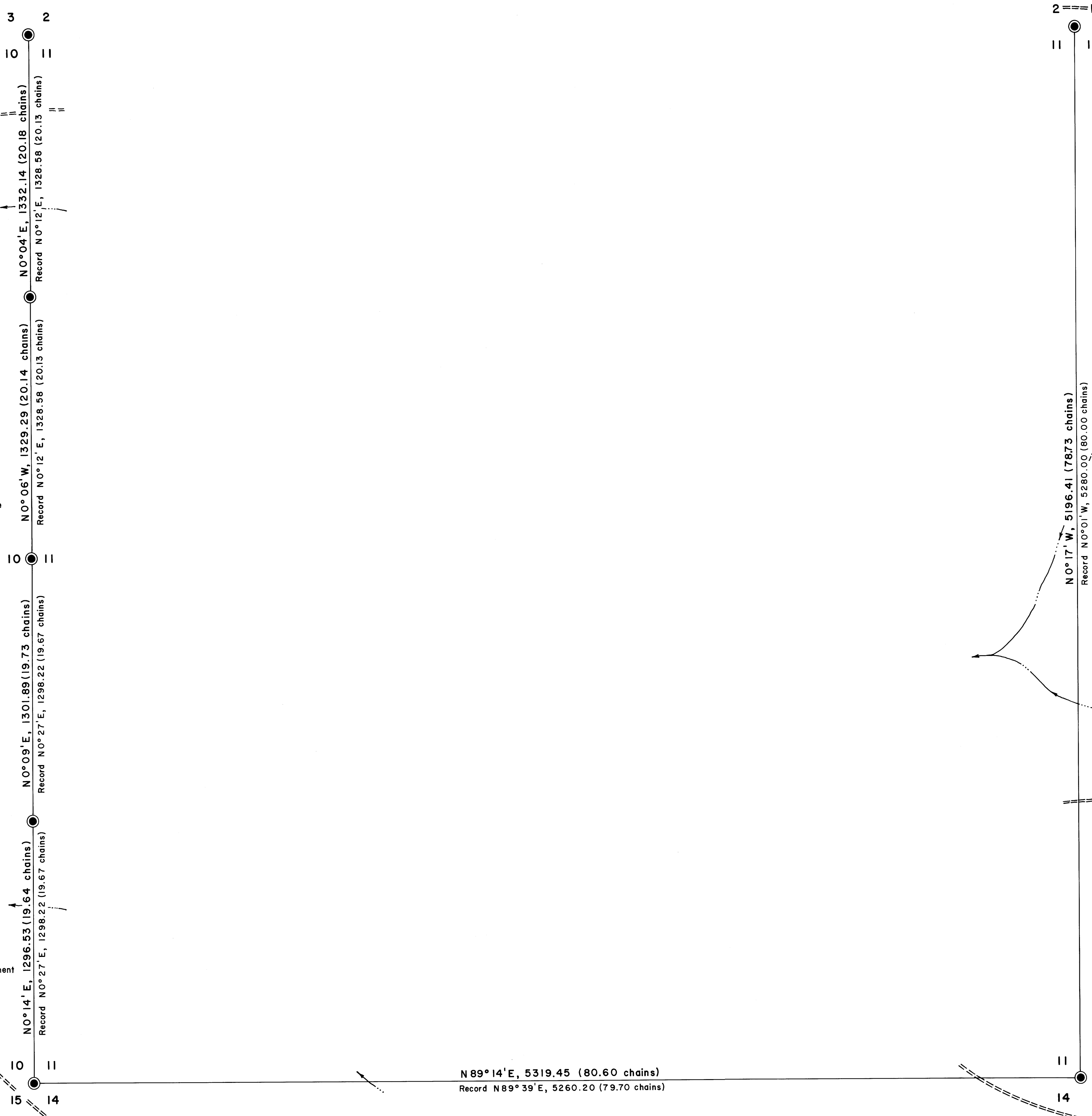
Fd. 16" madrone corner tree  
Scribes vis.  
From which a:  
15" madrone BT  
No marks  
Bears N 18° E, 11.9 ft.  
(Record N 30° E)  
24" Douglas fir BT  
Bears S 17 1/2° E, 50.2 ft.  
8" Douglas fir BT  
Bears S 74° W, 15.8 ft.

Fd. brass cap for the  
S 1/16, S 10, S 11 set by  
U. S. Cadastral Survey  
B. L. M. 1958  
From which a:  
8" white oak BT  
Face grown over  
Bears S 77 1/2° E, 2.6 ft.  
(Record 3.5 ft.)  
13" white oak BT  
Face grown over  
Bears S 42° W, 11.2 ft.

Fd. brass cap mkd.  
Cadastral Survey  
U. S. Bureau of Land Management  
Penalty \$200 for removal  
T 25 S, R 7 W  
S 10, S 11, S 15, S 14 1958  
From which a:  
22" cedar BT  
Old face grown over  
Bears N 61° E, 56.1 ft.  
28" cedar BT  
Old face grown over  
Bears S 43 1/4° E, 44.9 ft.  
(Record S 43 1/2° W)  
22" cedar BT  
Old face grown over  
Bears S 15 3/4° W, 29.7 ft.  
20" cedar BT  
Old face grown over  
Bears N 69° W, 27.4 ft.  
Also found a County Surveyor  
brass cap buried along side  
BLM cap. Found a 4 x 4  
wooden post scribed, "S 10,  
S 11, S 15, S 14".

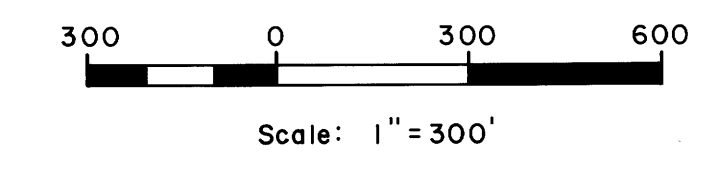
Fd. brass cap mkd.  
U. S. Cadastral Survey  
T 25 S, R 7 W, W M  
S 2, S 1, S 11, S 12, 1958  
Bureau of Land Management  
From which a:  
40" original cedar BT stump  
Bears N 14° E, 84.8 ft.  
(Record 45.8 ft.)  
56" Douglas fir  
Probable original BT  
Bears S 33 3/4° E, 47.5 ft.  
46" original cedar BT  
Old and new scribes vis.  
Bears N 34° W, 22.0 ft. to old face  
13" cedar BT  
Bears N 13° E, 29.9 ft.  
(Record 28.8 ft.)  
20" cedar BT  
Bears S 65° E, 5.0 ft.  
County Surveyor's brass cap  
set along side.

Fd. an 8' x 6' x 6' rock with  
chiseled on North face  
From which a:  
30" original laurel BT  
Face rotted out  
Bears S 25° E, 9.0 ft.  
24" original laurel BT  
Face rotted out  
Bears N 32° W, 17.8 ft.  
10" red fir BT  
Face grown over  
Bears N 42° W, 14.2 ft.  
14" red fir BT  
Face grown over  
Bears S 16° E, 20.0 ft.  
20" red fir BT  
Now dead, scribes vis.  
Bears S 88 1/2° W, 52.8 ft.  
6" white fir BT  
Face grown over  
Bears N 24° E, 14.0 ft.



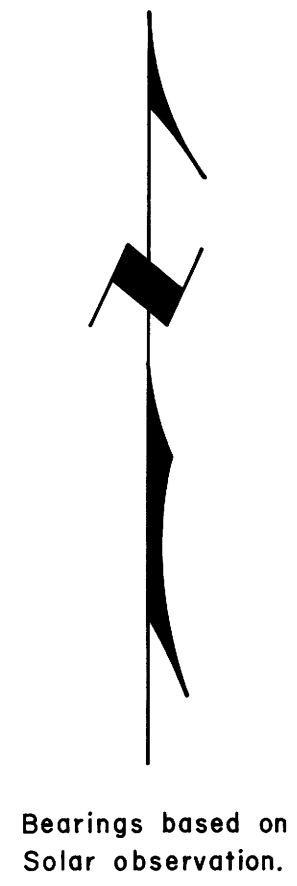
PROPERTY LINE SURVEY OF  
SECTION 11, T. 25 S., R. 7 W., W. M.  
U. S. Bureau of Land Management  
Roseburg, Oregon District

Shaner Engineering  
Scale: 1" = 300' December 26, 1972  
Contract No. 53500-CT2-293 (N)



LEGEND

- Corner found
- Random line only, no true line marked
- Dirt road
- Stream



COUNTY SURVEYORS FILE DATA  
DO NOT REMOVE FROM OFFICE

5-67W