

RECEIVED  
DEC 24 1973

COUNTY SURVEYOR  
JUGLAS COUNTY, ORE

Fd. brass cap mkd.  
US Cadastral Survey  
T26 S  
R8 W, S25, S36  
R7 W, S30, S31  
Bureau of Land Management 1959  
From which a:

Fd. 3/4" x 15" iron pipe  
Set brass cap alongside mkd.  
T26 S, R8 W, W M  
S26, S25, S35, S36 1973  
From which a:  
60" Douglas fir original BT  
Bark scribes vis.  
Bears S15°E, 241.2 ft.  
(Record 30" fir, 211.2 ft.)  
30" Douglas fir original BT  
Face vis.  
Bears S2°W, 183.4 ft.  
(Record 12" fir, 178.2 ft.)  
32" Douglas fir original BT  
Scribing vis.  
Bears N41°E, 101.8 ft.  
(Record 10" Douglas fir, 57.4 ft.)  
16" Douglas fir, 1 scribed  
"T26 S, R8 W S35 BT"  
Bears S38°W, 30.0 ft.  
18" Douglas fir, 1 scribed  
"T26 S, R8 W S36 BT"  
Bears S53°E, 38.4 ft.  
14" Douglas fir, 1 scribed  
"T26 S, R8 W S26 BT"  
Bears N32°W, 87.9 ft.

Set brass cap mkd.  
T26 S, R8 W  
1/4 S25, S36 1973  
From which a:  
38" Douglas fir original BT  
Scribes vis.  
Bears S83°E, 508.2 ft.  
40" Douglas fir original BT  
Scribes vis.  
Bears N58°E, 320.4 ft.  
(Record 264.0 ft.)  
20" Douglas fir, 1 scribed  
"S25 1/4 BT"  
Bears N37°W, 15.5 ft.  
12" Douglas fir, 1 scribed  
"S36 1/4 BT"  
Bears S86°E, 11.0 ft.

Set brass cap mkd.  
T26 S, R8 W  
W1/16 S25, S36 1973  
From which a:  
26" Douglas fir, 1 scribed  
"S25 W1/16 BT"  
Bears N7°W, 23.6 ft.  
24" Douglas fir, 1 scribed  
"S36 W1/16 BT"  
Bears South, 97.7 ft.

Fd. brass cap mkd.  
County Surveyor's Office  
T26 S, R8 W  
1/4 S35, S36 1961  
From which a:  
18" Douglas fir BT  
Face vis.  
Bears S42°W, 10.5 ft.  
20" Douglas fir BT  
Face vis.  
Bears N44°E, 31.0 ft.  
44" Douglas fir snag, original BT  
Bears S33/4°E, 138.6 ft.

Set brass cap mkd.  
T26 S, R8 W, W M  
S1/16 S35, S36 1973  
From which a:  
8" Douglas fir, 1 scribed  
"S1/16 S36 BT"  
Bears S45 1/2°E, 23.9 ft.  
10" Douglas fir, 1 scribed  
"S1/16 S35 BT"  
Bears N29°W, 29.7 ft.

Fd. 3/4" iron rod  
(See Weyerhaeuser survey,  
C. S. File 55/285) and  
Set brass cap alongside mkd.  
T26 S, R8 W, S35, S36  
T27 S, R8 W, S2, S1 1973  
From which a:  
36" fir stump, probable original BT  
Rotten and burnt  
Bears S30°W, 7.3 ft.  
Probable original fir BT  
Now mound of rotten wood  
Bears N20°W, 31.0 ft.  
14" Douglas fir, 1 scribed  
"T26 S, R8 W, S36 BT"  
Bears N11°E, 16.5 ft.  
24" Douglas fir, 1 scribed  
"T27 S, R8 W, S2 BT"  
Bears S41°W, 19.6 ft.  
12" Douglas fir, 1 scribed  
"T26 S, R8 W, S35 BT"  
Bears N65°W, 33.3 ft.  
16" Douglas fir, 1 scribed  
"T27 S, R8 W, S1 BT"  
Bears S88°E, 29.0 ft.

Set brass cap mkd.  
T26 S, R8 W  
S36 CW1/16 1973  
From which a:  
14" Douglas fir, 1 scribed  
"S36 CW1/16 BT"  
Bears S6°W, 2.5 ft.  
12" Douglas fir, 1 scribed  
"S36 CW1/16 BT"  
Bears N11°W, 13.8 ft.

Set brass cap mkd.  
T26 S, R8 W  
S36 SW1/16 1973  
From which a:  
30" Douglas fir snag, 1 scribed  
"S36 SW1/16 BT"  
Bears S75°E, 12.9 ft.  
12" Douglas fir, 1 scribed  
"S36 SW1/16 BT"  
Bears S80°W, 143.3 ft.

Set brass cap mkd.  
T26 S, R8 W  
S36 C1/4 1973  
From which a:  
10" Douglas fir, 1 scribed  
"S36 C1/4 BT"  
Bears S7°E, 19.6 ft.  
10" Douglas fir, 1 scribed  
"S36 C1/4 BT"  
Bears S63°W, 34.3 ft.

Set brass cap mkd.  
T26 S, R8 W  
S36 CS1/16 1973  
From which a:  
36" Douglas fir snag, 1 scribed  
"S36 CS1/16 BT"  
Bears N64°E, 73.1 ft.  
36" Douglas fir snag, 1 scribed  
"S36 CS1/16 BT"  
Bears S69°W, 29.8 ft.

Set brass cap mkd.  
T26 S, R8 W  
S36 NE1/16 1973  
From which a:  
12" Douglas fir, 1 scribed  
"S36 NE1/16 BT"  
Bears S55°E, 15.8 ft.  
12" Douglas fir, 1 scribed  
"S36 NE1/16 BT"  
Bears S42°W, 22.2 ft.

Set brass cap mkd.  
T26 S, R8 W  
S36 CE1/16 1973  
From which a:  
"W" nail in top center of  
52" Douglas fir stump, 1 scribed  
"S36 CE1/16 BT"  
Bears S66°W, 49.6 ft.  
20" Douglas fir, 1 scribed  
"S36 CE1/16 BT"  
Bears N25°E, 67.0 ft.

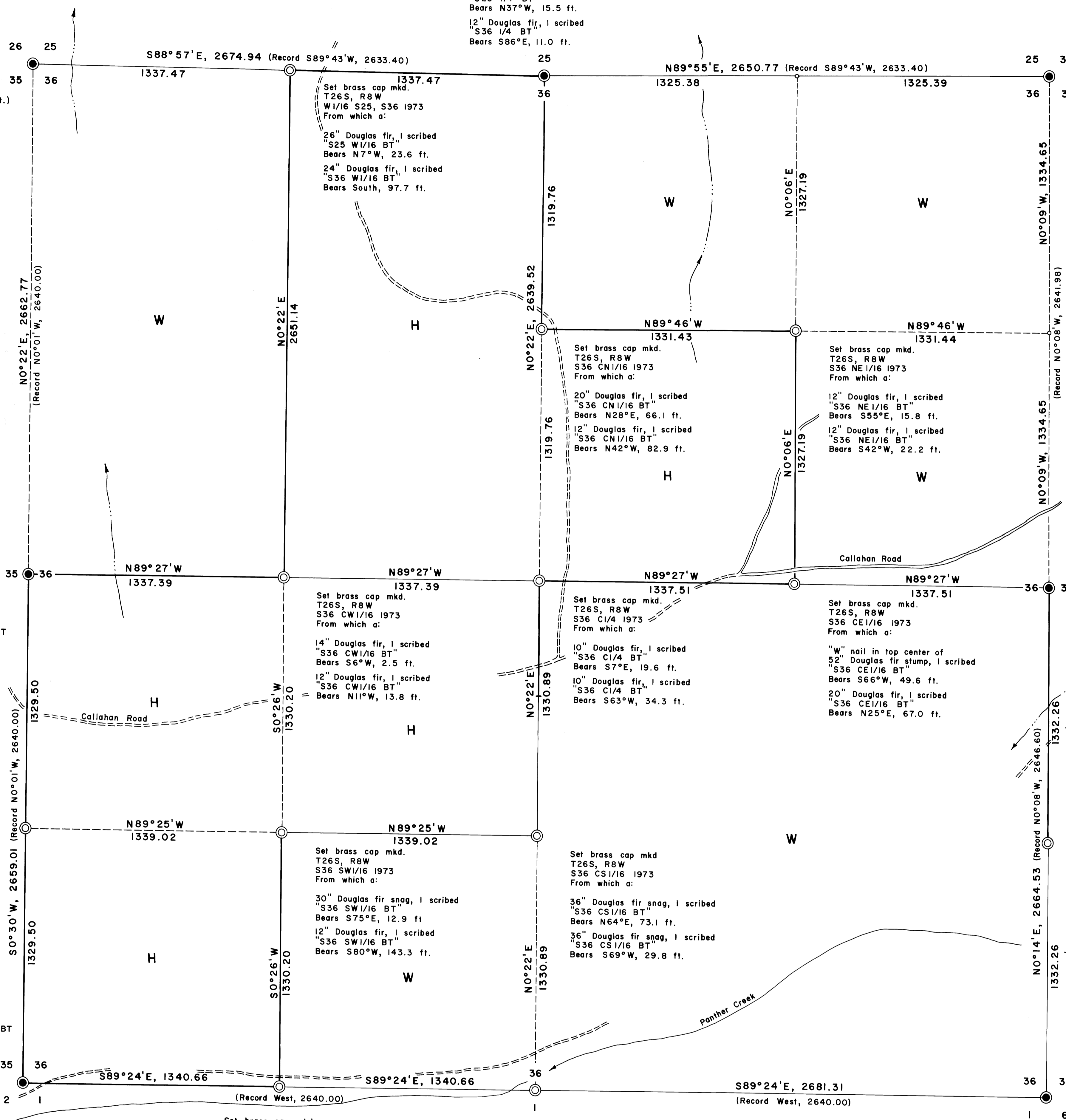
Fd. brass cap mkd.  
County Surveyor's Office  
T26 S  
R8 W, S36  
R7 W, S31  
1/4 S63  
From which a:

32" Douglas fir snag, original BT  
Face rotted out  
Bears N28°E, 17.2 ft.  
28" Douglas fir BT  
Scribing vis.  
Bears N32°E, 32.6 ft.  
6" Douglas fir, 1 scribed  
"1/4 S S36 BT"  
Bears S86°W, 19.7 ft.  
Fd. 1/2" aluminum pipe driven  
in beside brass cap.

Set brass cap mkd.  
T26 S  
R8 W, S36  
R7 W, S31  
S1/16 1973  
From which a:  
12" Douglas fir, 1 scribed  
"S36 S1/16 BT"  
Bears S35°W, 29.5 ft.  
8" Douglas fir, 1 scribed  
"S31 S1/16 BT"  
Bears S31°E, 69.4 ft.

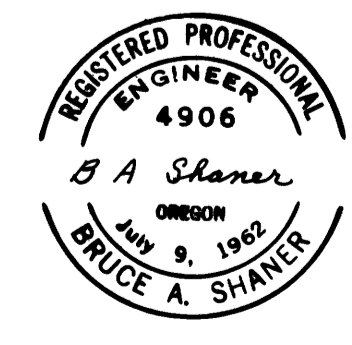
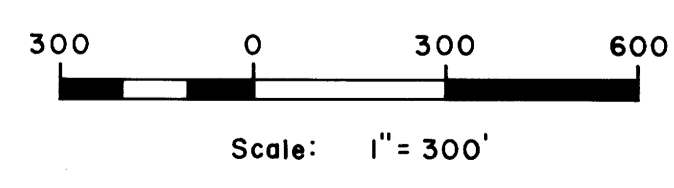
Set brass cap mkd.  
T26 S, R8 W, S36  
T26 S, R7 W, S31  
T27 S, R8 W, S1  
T27 S, R7 W, S6  
From which a:

40" Douglas fir stump, original BT  
Face badly burned, scribes "BT" vis.  
Bears S32°W, 54.8 ft.  
36" Douglas fir stump, prob. original BT  
Badly burned and rotted  
Bears N35°W, 59.0 ft.  
(Record N40°W, 61.4 ft.)  
36" cedar stump, probable original BT  
1 re-scribed "T26 S, R7 W, S31 BT"  
Bears N20°E, 78.0 ft.  
(Record 67.3 ft.)  
6" Douglas fir, 1 scribed  
"T26 S, R8 W, S36 BT"  
Bears N64°W, 55.4 ft.  
8" hemlock, 1 scribed  
"T27 S, R7 W, S6 BT"  
Bears S62°E, 24.7 ft.  
8" Douglas fir, 1 scribed  
"T27 S, R8 W, S1 BT"  
Bears S34°W, 114.4 ft.



PROPERTY LINE SURVEY IN  
SECTION 36, T.26 S., R.8 W., W. M.  
For: Hub Lumber Co.  
Roseburg, Oregon, and  
Weyerhaeuser Co.  
North Bend, Oregon

By: Shaner Engineering, Roseburg, Oregon  
December 21, 1973



LEGEND

- Corner found (circle with dot)
- Corner set (circle with center dot)
- Corner computed, not set (circle with center dot)
- True line, marked with blazes and red paint (solid line)
- Random line only, no true line marked (dashed line)
- Line computed, not run (dotted line)
- Rocked road (double line)
- Dirt road (dashed line)
- Stream (wavy line)
- Note: "W" nail in root collar of all BT's.

Bearings based on  
solar observation.  
Mean magnetic declination 20°E.