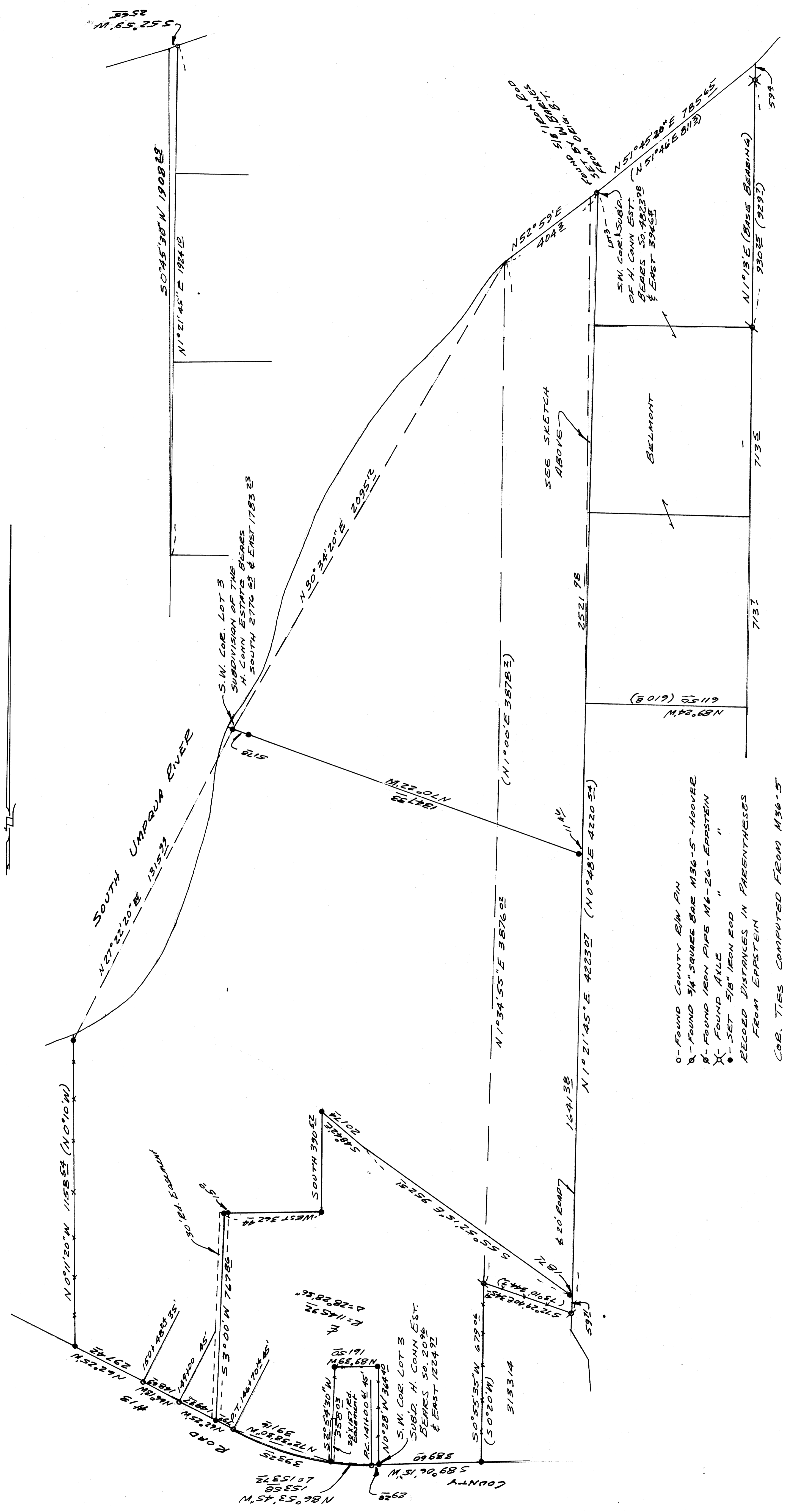


COUNTY SURVEYORS FILE DATA  
DO NOT REMOVE FROM OFFICE

FILED  
RECEIVED  
NOV 9 1973  
COUNTY SURVEYOR  
DOUGLAS COUNTY, ORE.

SURVEY FOR DEED DESCRIPTION  
IN SECTIONS 5 & 8, T. 27 S., R. 6 W. N. M.  
SURVEYED FOR THE J. F. BONEBRAKE ESTATE  
BY BRUCE ROGERS  
NOV. 1973  
1" = 200'

REGISTERED  
OREGON  
LAND SURVEYOR  
BRUCE R. ROGERS  
660



0 - FOUND COUNTY B.M. PIN  
X - FOUND 3/4" SQUARE BARE M36-5 - HOOVER  
X - FOUND IRON PIPE M4-26 - ERPSTEIN  
X - FOUND AXLE "  
• - SET 5/8" IRON ROD  
RECORDED DISTANCES IN PARENTHESES  
FROM ERPSTEIN  
COR. TIES COMPUTED FROM M36-5

COUNTY SURVEYORS FILE DATA  
DO NOT REMOVE FROM OFFICE