

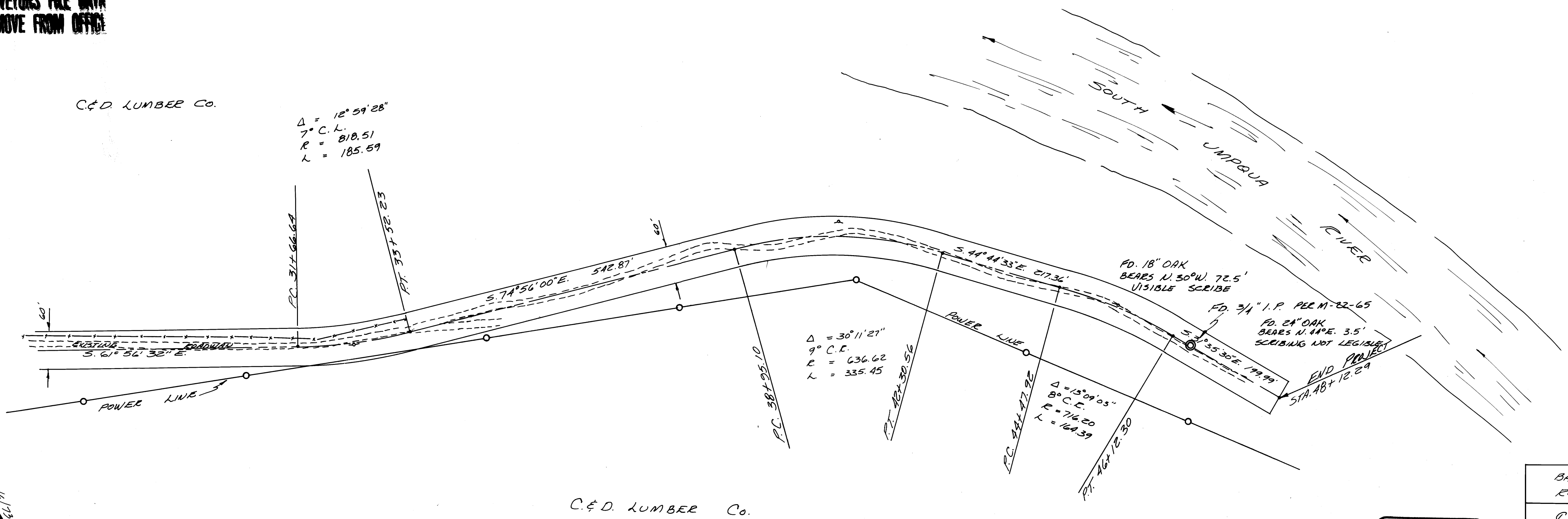
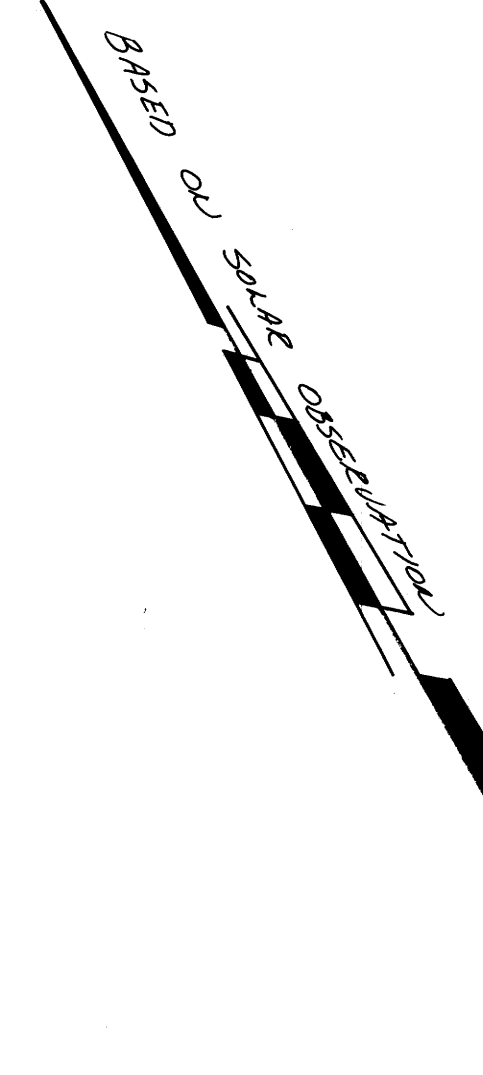
COUNTY SURVEYORS FILE DATA
DO NOT REMOVE FROM OFFICE

FILED
RECEIVED
OCT 5 1973
COUNTY SURVEYOR
DOUGLAS COUNTY, ORE.

C & D LUMBER CO.

$\Delta = 12^{\circ} 59' 28''$
 $7^{\circ} C.E.$
 $R = 810.51$
 $L = 185.59$

PLAN
SURVEYED
PLOTTED
CHECKED
DATE
BY

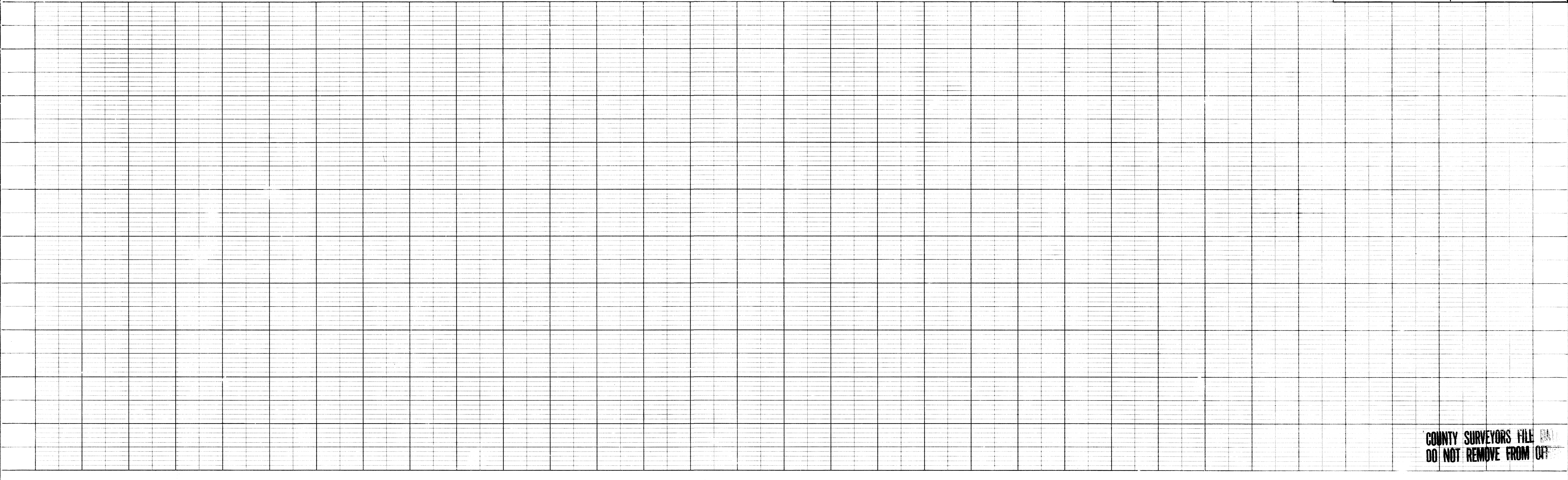


C & D LUMBER Co.

REGISTERED
PROFESSIONAL
LAND SURVEYOR
Glenn S. Baughman
OREGON
OCT 14 1971
GLENN S. BAUGHMAN
936

BAUGHMAN SURVEYING SERVICE
ROSEBURG, OREGON
ALIGNMENT ON ACCESS ROAD
FOR - PETE GILL
IN SEC. 13, T.30S, R.6W
&
SEC. 18, T.30S, R.5W.
SCALE 1" = 100'
DATE: OCT. 1973
SHEET 2 OF 2

PROFILE
SURVEYED
PLOTTED
CHECKED
DATE
BY



COUNTY SURVEYORS FILE DATA
DO NOT REMOVE FROM OFFICE