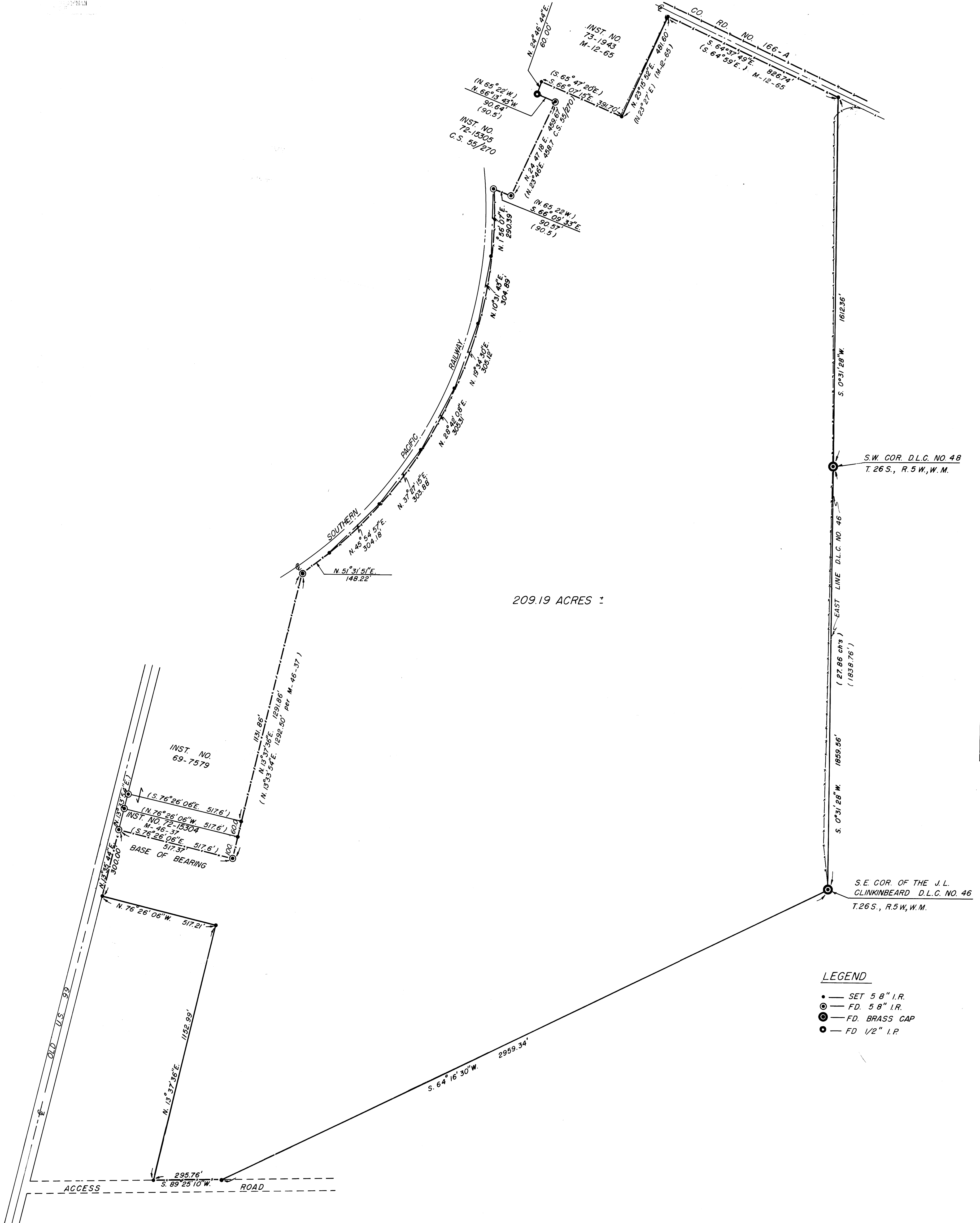


SURVEY FOR PROPERTY CORNERS
 IN SEC. 18 & 19, T.26 S., R.5 W., W.M.
 & SEC. 13 & 24, T.26 S., R.6 W., W.M.
 FOR — WEYERHAEUSER COMPANY
 BY — BAUGHMAN SURVEYING SERVICE
 AUGUST 1973 SCALE 1" = 200'

COUNTY SURVEYORS FILE DATA
 DO NOT REMOVE FROM OFFICE

FILED
 RECEIVED
 COUNTY SURVEYORS
 DOUGLAS COUNTY, NEB.
 M49 - 35

Alvin S. Baughman



- LEGEND**
- — SET 5/8" I.R.
 - — FD. 5/8" I.R.
 - ⊙ — FD. BRASS CAP
 - ⦿ — FD 1/2" I.P.

BASED ON M-46-37

COUNTY SURVEYORS FILE DATA
 DO NOT REMOVE FROM OFFICE

M49 - 35