

FILED  
RECEIVED  
JUN 21 1973  
COUNTY SURVEYOR  
DOUGLAS COUNTY, ORE.

Fd. brass cap mkd.  
County Surveyor's Office  
T30S, R8W  
S17, S16, S20, S21 1965  
From which a:

26" original laurel BT  
Face vis.  
Bears N14°E, 61.4 ft.  
19" original pine BT  
Windfall, face vis.  
Bears S37°E, 66.0 ft.  
24" pine BT  
Scribing vis.  
Bears S50°W, 13.5 ft.  
(Record S67°W)  
6" Douglas fir BT  
Scribing vis.  
Bears N76°W, 8.7 ft.  
12" Douglas fir BT  
Partially uprooted and leaning  
Scribing vis.  
Bears N71°E, 13.6 ft.  
6" white fir BT  
Scribing vis.  
Bears S81°E, 29.3 ft.

Fd. brass cap mkd.  
County Surveyor's Office  
T30S, R8W  
S19, S20, S21 1969  
From which a:

12" original white oak BT, now down  
Bears S80°W, 9.7 ft.  
16" original white oak BT  
Bears S54°E, 8.6 ft  
6" Douglas fir BT  
Bears S72°E, 23.5 ft.  
12" Douglas fir BT  
Bears S50°W, 21.8 ft.

Fd. brass cap mkd.  
County Surveyor's Office  
T30S, R8W  
1/4 S17, S20 1969  
From which a:

8" original pine BT, snag  
Scribing vis.  
Bears S54°E, 5.3 ft.  
36" original pine BT, snag  
Bears N35°W, 31.0 ft.  
8" white fir BT  
Scribing vis.  
Bears N22°W, 11.5 ft.  
10" Douglas fir BT  
Scribing vis.  
Bears S28°W, 30.1 ft.

Set brass cap mkd.  
W 1/16 S17, S20 1973  
From which a:

12" Douglas fir, I scribed  
"W 1/16 S17 BT"  
Bears N32°W, 13.6 ft.  
6" Douglas fir, I scribed  
"W 1/16 S20 BT"  
Bears S7°W, 5.8 ft.

Set brass cap mkd.  
NW 1/16 S20 1973  
From which a:

10" cedar, I scribed  
"NW 1/16 S20 BT"  
Bears N35°W, 48.2 ft.  
6" Douglas fir, I scribed  
"NW 1/16 S20 BT"  
Bears S41°E, 25.7 ft.

Set brass cap mkd.  
N 1/16 S20 1973  
From which a:

8" cedar, I scribed  
"CN 1/16 S20 BT"  
Bears N35°W, 8.5 ft.  
8" Douglas fir, I scribed  
"CN 1/16 S20 BT"  
Bears S24°E, 32.9 ft.

Set brass cap mkd.  
C 1/4 S20 1973  
From which a:

16" Douglas fir, I scribed  
"C 1/4 S20 BT"  
Bears S36°W, 25.5 ft.  
8" Douglas fir, I scribed  
"C 1/4 S20 BT"  
Bears N26 1/2°E, 9.5 ft.

Set brass cap mkd.  
W 1/16 C-S20 1973  
From which a:

36" Douglas fir, I scribed  
"CW 1/16 S20 BT"  
Bears N82 1/2°E, 42.5 ft.  
28" red cedar, I scribed  
"CW 1/16 S20 BT"  
Bears S16°W, 36.0 ft.

Set brass cap mkd.  
S 1/16 S20 1973  
From which a:

12" Douglas fir, I scribed  
"CS 1/16 S20 BT"  
Bears S39°E, 18.3 ft.  
12" Douglas fir, I scribed  
"CS 1/16 S20 BT"  
Bears S30°W, 36.2 ft.

Set brass cap mkd.  
SW 1/16 S20 1973  
From which a:

8" cedar, I scribed  
"SW 1/16 S20 BT"  
Bears N20 1/2°W, 7.2 ft.  
10" Douglas fir, I scribed  
"SW 1/16 S20 BT"  
Bears S23°E, 17.1 ft.

Fd. brass cap mkd.  
County Surveyor's Office  
T30S, R8W  
1/4 S20, S29 1965  
From which a:

24" original cedar BT  
Scribing partially vis.  
Bears S42°W, 5.9 ft.  
12" white fir BT  
Scribing vis.  
Bears N4°E, 12.6 ft.  
(Record shows cedar)  
10" white fir BT  
Scribing partially vis.  
Bears S12°W, 15.0 ft.  
(Record shows Douglas fir)

Fd. brass cap set by  
County Surveyor in 1965  
From which a:

22" original madrone BT  
Scribes vis.  
Bears S11°E, 38.9 ft.  
16" original madrone BT  
Now down but with definite  
old rotted face  
Bears S44°W, 38.9 ft.  
15" white fir BT  
Bears N59°W, 9.6 ft.  
20" cedar BT  
Bears N11°E, 31.5 ft.  
15" white fir BT  
Bears S1°E, 19.0 ft.  
9" Douglas fir BT  
Bears S31°W, 23.0 ft.

Fd. brass cap mkd.  
U. S. Dept. of the Interior  
Cadastral Survey  
Bureau of Land Management  
T30S, R8W  
S19, S20 1972  
From which a:

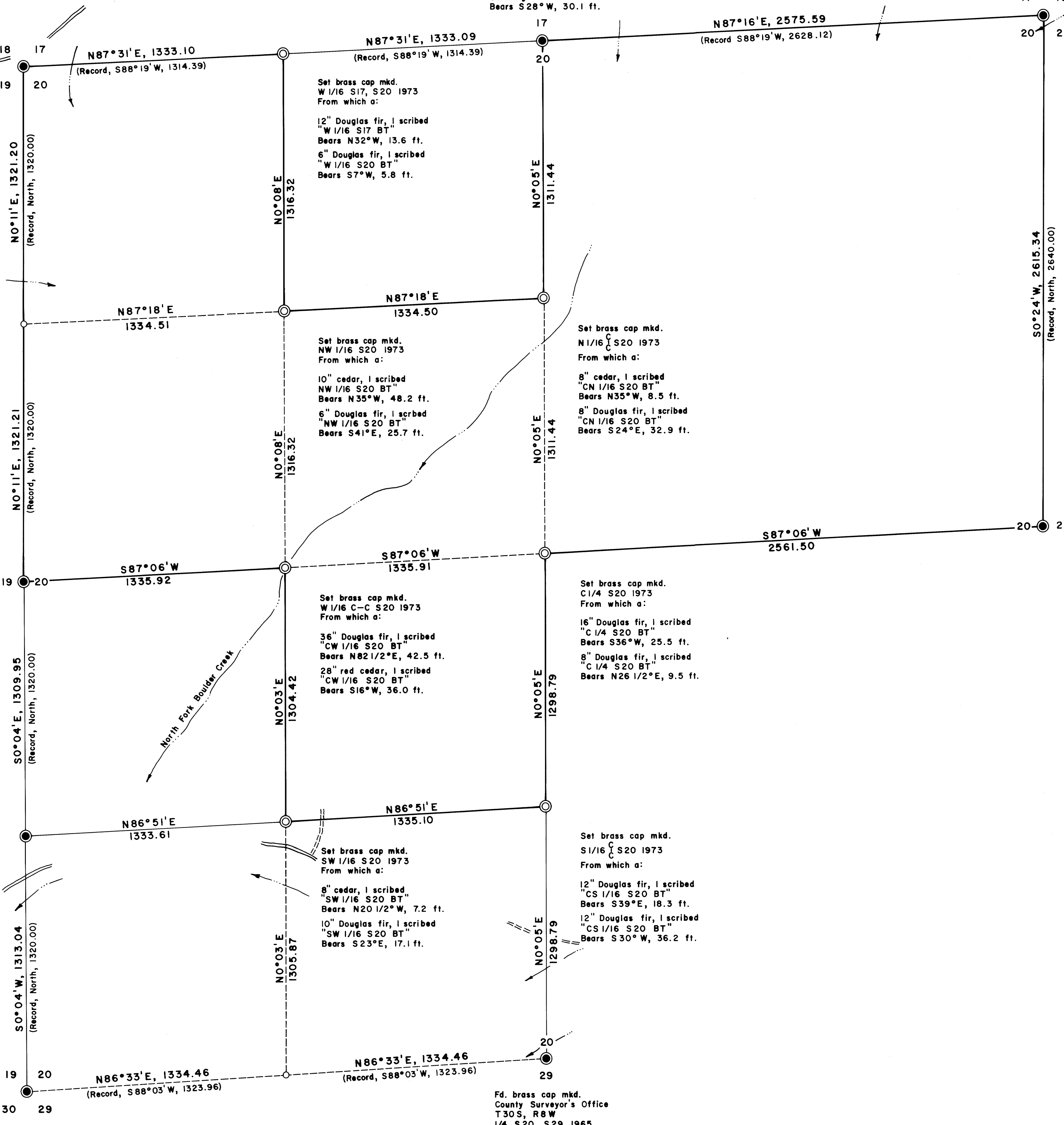
10" Douglas fir BT  
Scribes vis.  
Bears S75°E, 32.3 ft.  
16" Douglas fir BT  
Scribes vis.  
Bears West 28.1 ft.  
(Record, 29.7 ft.)

Fd. brass cap mkd.  
U. S. Department of the Interior  
Cadastral Survey  
Bureau of Land Management  
S1/16 S19, S20 1972  
From which a:

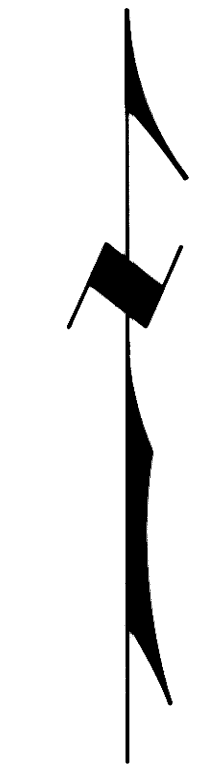
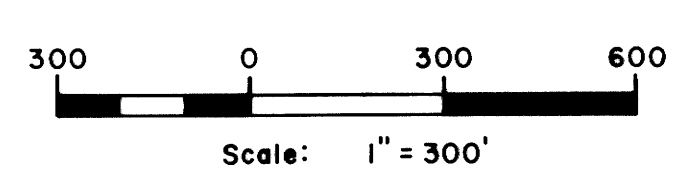
7" white fir BT  
Scribes vis.  
Bears N32 1/2°E, 16.2 ft.  
12" Douglas fir BT  
Scribes vis.  
Bears N56 1/2°W, 44.5 ft.

Fd. brass cap mkd.  
County Surveyor's Office  
T30S, R8W  
S19, S20, S30, S29 1965  
From which a:

28" original sugar pine BT  
Good face, has been cut  
open and grown over again  
Bears N25°E, 5.3 ft.  
26" original sugar pine BT  
Has been chopped open  
and grown over again  
Bears S48°E, 53.0 ft. (to face)  
6" chinquapin BT  
Scribes vis.  
Bears S60°E, 21.7 ft.  
6" chinquapin BT  
Scribes vis.  
Bears S22°W, 14.2 ft.  
16" Douglas fir BT  
Scribes vis.  
Bears N83°W, 20.4 ft.  
10" sugar pine BT  
Scribes vis.  
Bears N46°E, 49.3 ft.  
(Record shows Douglas fir)



PROPERTY LINE SURVEY IN  
SECTION 20, T.30 S., R.8 W., W. M.  
For: Moore Mill and Lumber Co.  
Bandon, Oregon  
By: Shaner Engineering, Roseburg, Oregon  
June 21, 1973



LEGEND

Corner found	●
Corner set	○
Corner computed, not set	○
True line, marked with blazes and red paint	—————
Random line only, no true line marked	—————
Line computed, not run	- - - - -
Stream	~~~~~
Rocked road	===== ===== =====
Dirt road	=====