

SURVEY FOR PROPERTY CORNERS

LOCATED IN SEC. 15, T. 28 S., R. 6 W., W.M.

SURVEY FOR : ROY LIMBAUGH

BY : BAUGHMAN SURVEYING SERVICE

MAY 1973

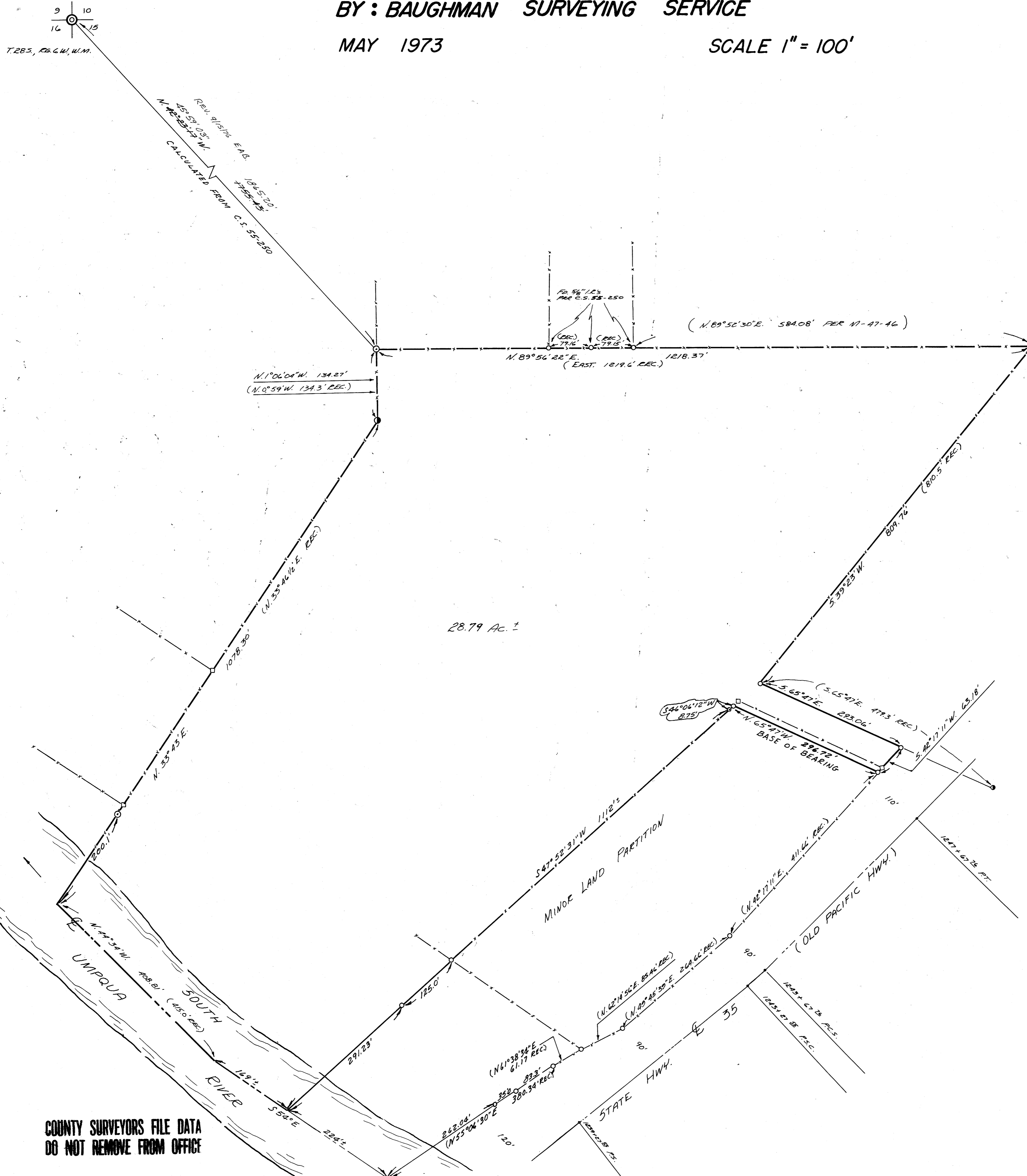
SCALE 1" = 100'

COUNTY SURVEYORS FILE DATA
DO NOT REMOVE FROM OFFICE

FILED *LL*
RECEIVED *dr*

JUN 1 1973

COUNTY SURVEYOR
LOUGLAS COUNTY, ORE.



28.79 AC. ±

BASED ON M-47-46

LEGEND:

- FD. 98' I.E.
- ⊙ FD. 74' I.E.
- FD. 114' I.P.
- FD. 16' I.P.

COUNTY SURVEYORS FILE DATA
DO NOT REMOVE FROM OFFICE

REGISTERED
PROFESSIONAL
LAND SURVEYOR

Eugene A. Bloom

OREGON
MAY 19, 1960
EUGENE A. BLOOM
492