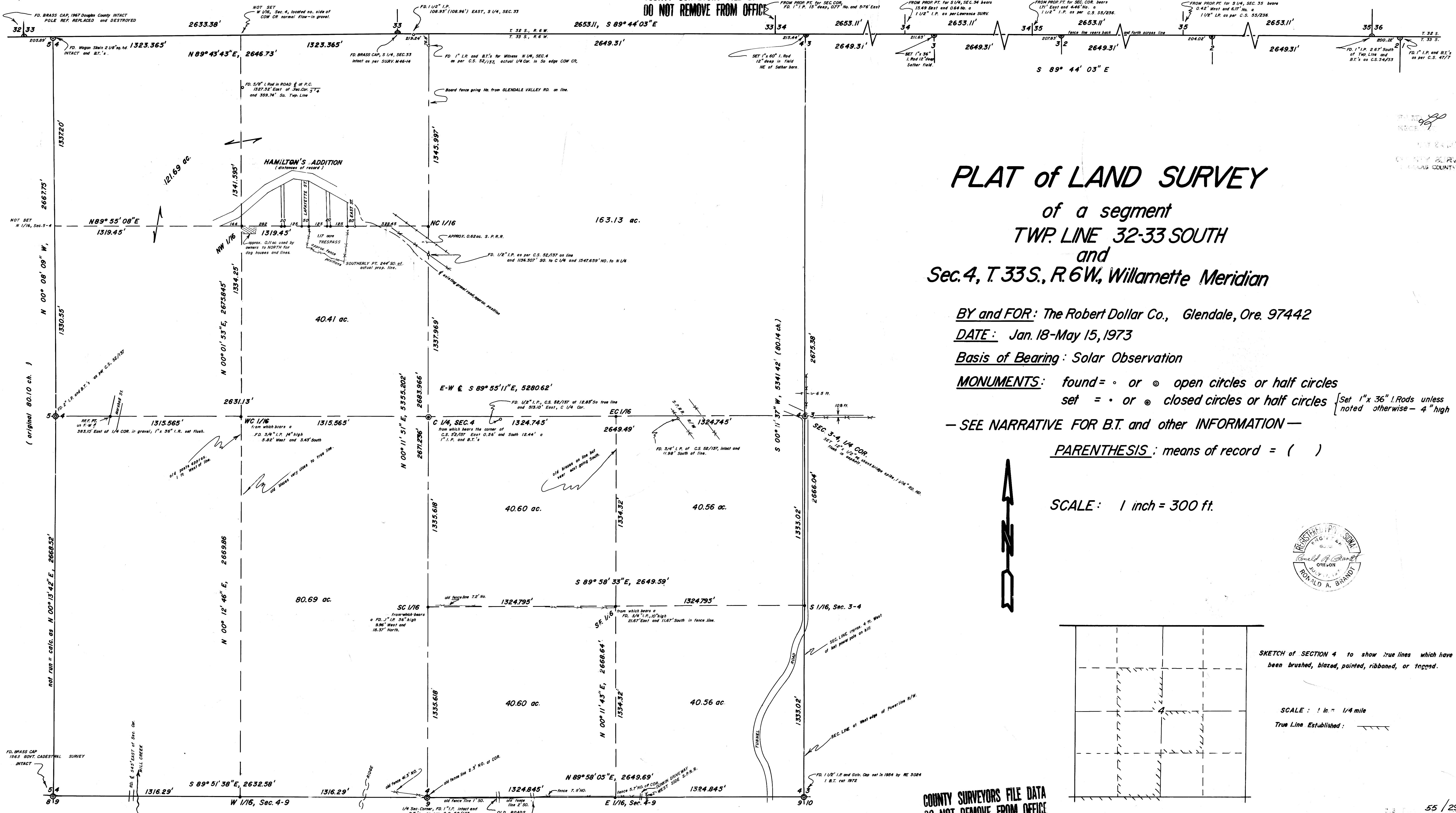


COUNTY SURVEYORS FILE DATA  
DO NOT REMOVE FROM OFFICE



**PLAT of LAND SURVEY**  
 of a segment  
 TWP. LINE 32-33 SOUTH  
 and  
 Sec. 4, T. 33 S., R. 6 W., Willamette Meridian

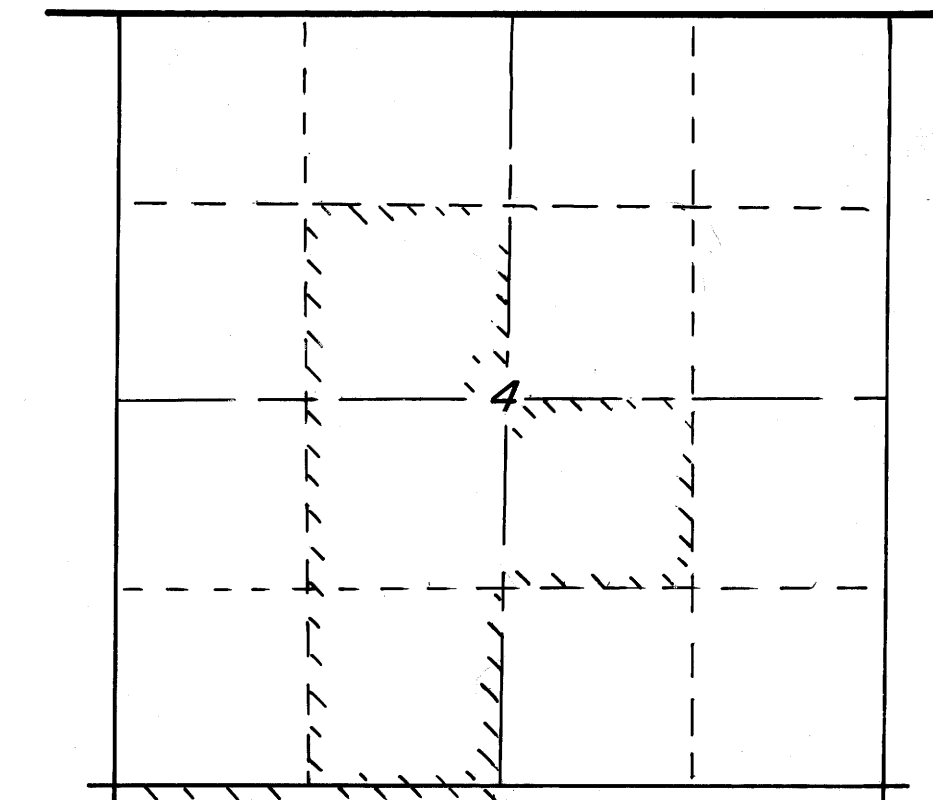
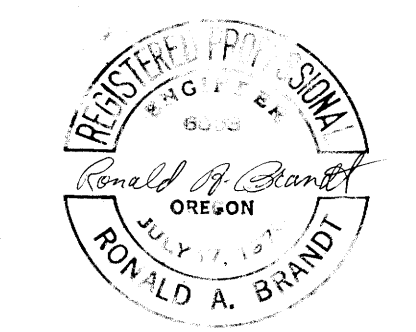
**BY and FOR:** The Robert Dollar Co., Glendale, Ore. 97442  
**DATE:** Jan. 18-May 15, 1973  
**Basis of Bearing:** Solar Observation

**MONUMENTS:** found = • or ⊙ open circles or half circles  
 set = • or ⊙ closed circles or half circles {Set 1" x 36" I. Rods unless noted otherwise - 4" high

— SEE NARRATIVE FOR B.T. and other INFORMATION —

**PARENTHESIS:** means of record = ( )

**SCALE:** 1 inch = 300 ft.



SKETCH OF SECTION 4 to show true lines which have been brushed, blazed, painted, ribboned, or tagged.

SCALE: 1 in. = 1/4 mile  
 True Line Established: ————

COUNTY SURVEYORS FILE DATA  
 DO NOT REMOVE FROM OFFICE

May 23, 1973

Ronald A. Brandt, Engineer  
THE ROBERT DOLLAR CO.  
Glendale, Oregon 97442

NARRATIVE OF SURVEY

concerning open and closed traverse work on the Township Line of 32-33 South and in Sec. 4, T.33 S., R. 6W., W.M.

Survey by The Robert Dollar Co. regarding ownership of 200 acres in Sec. 4, T. 33 S., R. 6. W.

PURPOSE:

to monument interior corners of Sec. 4 necessary for delineating R.D.Co. ownership and to re-establish original govt. corners lost on the exterior of the Sec. and easterly out the township line on the north boundary of T. 33S.;

METHOD:

transit traverses measuring angles to the nearest 30 seconds and distances to the nearest 1/100th ft.; traverses as follows -

- 1) open-traverse on the twp. line from the Corner, Sec. 1-2 (33-6) to the N 1/4, Sec. 4 (33-6) with closed-traverse tie to the approx. S 1/4, Sec. 34 (32-6) set by Mr. Lawrence;
- 2) closed-traverses about and within Sec. 4 (33-6) generally following old fence lines or blazed lines;

EQUIPMENT:

the work was conducted with a 30 sec. Gurley Transit, an adding 300 ft. Lufkin steel tape, plumb bobs, and a dip needle;

RESULTS:

four lost original govt. corners on the north boundary of T. 33S., R. 6. W. and the 1/4 corner, Sec. 3-4 (33-6) were re-established and seven interior corners, Sec. 4 and three exterior 1/16th corners, Sec. 4 and nine other property line points or reference points within Sec. 4 were monumented for a total of twenty-four monuments; true line was brushed, blazed, painted, ribboned or tagged on R.D.Co. property boundaries;

INDIVIDUALS AND DATES: this survey was begun on Jan. 18, 1973 and completed in the field on May 15, 1973; witnesses to the work were Barry Hubler, Buzz Pounds, Gareth Rice, Olger Sether and the occupants on adjacent properties in Sec. 4;

REFERENCES:

the Douglas County Assessor's Office and Land Surveyor's Office provided needed references, land surveys of record as follows -

- 1) original U.S. Govt. Survey notes;
- 2) Douglas County Records of re-newed corners;
- 3) Mr. C. E. Roberts survey of Hamilton's Addition, 1904;
- 4) Mr. J. E. Nelson's survey, 1933;
- 5) Mr. Lawrences survey, 42/327, 1955;
- 6) Mr. Wendroth's survey, 52/137, 1962;
- 7) Ronald A. Brandt's survey 55/135, 1969;
- 8) Mr. Thompson's survey 55/236, 1971;
- 9) Robert Dollar Co. surveys 55/246 and 55/260, 1972.

(CONTINUATION OF NARRATIVE)

CORNERS FOUND or SEARCHED: Township line - ground search failed to provide any evidence of record for the four twp. line corners re-established in this survey-agreeable with references 2 and 8 above.

1. Corner of Sections 1 and 2 (33-6)  
Found 1" I. pipe from which bears a -  
14" Maple, S 10° 50' W, 57.0' (record)  
14" D. fir, N. 83° 20' E, 78.8' (record)
  2. Corner of Sections 35 and 36 (32-6)  
Found 1" I. pipe 2.67' south of north boundary of Twp. 33 S.  
and bearing trees as per c.s. 55/236.
  3. S 1/4, Sec. 35, (32-6) c.s. 55/236  
Found 1 1/2" I. pipe located 6.17' No. and 0.42' West of  
calc. proportionate point, also noted B.T.'s; E-W fenceline  
projected east lies about 6' So. of pipe.
  4. Corner of Sec. 34-35 (32-6), c.s. 55/236  
Found 1 1/2" I. pipe located 1.71' East and 4.46' North  
of calc. proportionate point, also noted B.T.'s; E-W  
fenceline projected west lies about 4' So. of pipe.
  5. S 1/4, Sec. 34 (32-6) c.s. 42/327  
Found 1 1/2" I. pipe (located 15.49' East and 0.64' North  
of calc. proportionate point) and one B.T.
  6. Corner of Sec. 33-34 (32-6), Nelson 1933  
Found 1" I. pipe 15" deep located 0.77" North and 5.76' East  
of calc. proportionate point.
  7. N 1/4, Sec. 4 (33-6), c.s. 52/137  
Found references and used as per data in c.s. 52/137.
  8. S 1/4, Sec. 33 (32-6)  
Found Brass Cap intact in east shldr. county rd. No. 12  
as per references 7 and 9 and found 1 1/2" I. pipe (c.s.  
55/135) east on Twp. line 108.93' (record = 108.96') from  
said brass cap.
  9. Corner of Sec. 4-5 (33-6)  
Found Wagon Skein 2 1/8" sq. head from which bears a 45"  
Maple, S 7 1/2° W. 62'; 14" Maple, S 83° W, 51.2' dead on  
N.E. side by fire.
  10. Corner of Sec. 32-33 (32-6)  
Found 1967 Douglas County Brass Cap, references are destroyed  
since power poles have been replaced.
- Exterior Corners, Sec. 4 -
11. Sec. Cor., Sec. 3, 4, 9, and 10, by RE 3024 in 1954  
Found 1 1/2" I. pipe and Galv. Cap from which bears -  
18.2" D. fir, S 55° W, 35' and  
17.1" Madrone, N 82° W, 46.3'  
Logged 1972-the 10" pipe, S 17° W, 44.2'
  12. 1/4 Corner, Sec. 4-9 c.s. 52/137  
Found 1" I. pipe from which bears -  
12" Chinqupin, North, 33.5'  
8" Madrone, S 64° E, 32.0'

(CONTINUATION OF NARRATIVE)

Exterior Corners, Sec. 4 - (Continued)

13. Sec. Corner, Sec. 4, 5, 8, and 9  
Found Brass Cap, 1963 Govt. Cadestral Survey  
10.1" P.P., N 25° E, 33'  
7.1" D.F., S 13° E, 20.46'  
10.7" P.P., S 34° W, 19.14'  
7.0" D.F., N 45° W, 16.17'
14. 1/4 Corner, Sec. 4-5, c.s. 52/137  
Found 2" I. pipe, partially covered in wet bog  
14" Alder, S 32° W, 35.5'  
19" D. fir, S 41 1/2° E, 29.8'

Other Corners Within Sec. 4 -

15. C 1/4 Corner, c.s. 52/137  
Found 1" I. pipe located 0.56' East and 12.44' South  
of the actual corner.

CORNERS MONUMENTED: Township line - points monumented proportioned between Sec. Corner of Sections 1 and 2 and the N 1/4 Corner of Sec. 4 (33-6).

1. N 1/4, Sec. 2 (33-6)

Set 1" x 36" I. rod 4" high from which bears -  
14.1" D. fir, S 25° 44' W, 18.68'  
mkd. 1/4 S 2 PS 841 B.T.  
13.4" D. fir, S 44° 39' E, 28.50'  
mkd. 1/4 S 2 PS 841 B.T.

#129-T32-6  
#46-T33-6

Also an old D. fir stump showing evidence of early corner search bears S 28° 23' E, 44.0' from the corner as set, however, compared with the original B.T. (bearing from the corner a 20" D. fir, S 21° E, 26.4') the corner would be placed 11.45' East and 14.06' South of the corner as established.

2. Sec. Corner, Sec. 2-3 (33-6)

Set 1" I. rod 4" high from which bears -  
7.5" Madrone, South, 9.10'  
mkd. S 2 33-6 PS 841 B.T.  
6.8" D. fir, S 87° 02' W, 38.08'  
mkd. S 3 33-6 PS 841 B.T.  
and fenceline is 1.5' No. of I. rod.

#130-T32-6  
#47-33-6

3. N 1/4, Sec. 3 (33-6)

Set 1" x 36" I. rod 12" deep in Sether field from which bears -

1" x 36" I. rod 4" high, N 46° 55' 34" E, 63.90'  
1" x 36" I. rod 4" high, N 45° 47' 26" W, 49.59' both  
Set in a fence line.  
1 1/2" I. pipe (c.s. 42/327) N 89° 31' 26" W, 196.15'  
fence line 38.50' No. of I. rod at corner.

#131-T32-6

4. Sec. Corner, Sec. 3-4 (33-6) Sether Field

#48-33-6

Set 1" x 60" I. rod, 12" deep from which bears -  
1" x 36" I. rod 4" high, N 61° 32' 27" W., 22.96' at So.  
side of small cherry tree and  
1" x 36" I. rod 4" high, N 44° 15' 33" E, 56.26' at So.  
side of a cedar fence post and  
1" I. pipe 15" deep, N 89° 30' 59" W, 209.68' set by  
Nelson 1933.

#132-T32-6

#49-33-6

(CONTINUATION OF NARRATIVE)

Exterior Corners, Sec. 4 -

5. 1/4 Corner, Sec. 3-4 (33-6) in corner of Tunnel Rd.

Set 12" x 1/2" sq. shank bridge spike, 1 1/16" Rd. head,  
flush in asphalt surface from which bears -

1" x 36" I. rod 4" high at SE side of 19.4" P. Pine,  
N 33° 59' W, 34.5' and  
10" white oak, N 62° 20' E, 29.75'      # 133 - 732-6  
mkd. 1/4 PS 841 B.T.      # 50 33-6

6. S 1/16 Corner, Sec. 3-4 (33-6) at 5.3' West of Tunnel Rd.  
Centerline

Set 12" x 1/2" sq. shank bridge spike, 1 1/16" Rd. head,  
flush in asphalt surface from which bears -

1" x 36" I. rod 4" high, East, 24.3' and P. pole # B35  
Cop Co, S 76° 52' 36" E, 24.1' to center and  
1" x 36" I. rod 3" high on NW side 36" P. pine,  
S 24° 17' 36" E, 111.90'.

7. E 1/16 Corner, Sec. 4-9 (33-6) in Dunkin Field

Set 1" x 36" I. rod 4" high from which bears -

fenceline - 1" x 36" I. rod 4" high, N 43° 32' 15" W, 7.88' and  
fenceline - 1" x 36" I. rod 4" high, N 54° 01' 45" E, 9.83'  
fence line is 5.7' No. of corner.

8. W 1/16 Corner, Sec. 4-9 (33-6)

Set 1" x 36" I. rod 4" high from which bears  
21.2" D. fir, N 11° 54' 48" E, 11.96'  
mkd. W 1/16 S 4-9 PS 841 B.T.  
19.0" D. fir, N 77° 10' 48" W, 30.37'  
mkd. W 1/16, S 4-9 PS 841 B.T.

N-S Centerline, Sec. 4 -

9. SC 1/16 Corner,

Set 1" x 36" I. rod 4" high from which bears -  
4" D. fir, S 33° 12' W, 27.85'  
mkd. PS 841 B.T.  
12.5" D. fir N 77° 30' W, 29.70'  
mkd. 1/16 S 4 PS 841 B.T.

10. Center 1/4 Corner

Set 1" x 36" I. rod 4" high from which bears -  
20.5" D. fir, N 80° 09' 39" W, 41.57'  
mkd. C 1/4, S 4 PS 841 B.T.  
13.0 D. fir, N 08° 19' 21" E, 39.86'      # 51 - 33-6  
mkd. C 1/4, S 4 PS 841 B.T.      # 134 - 732-6

11. NC 1/16 Corner

Set 1" x 36" I. rod 4" high from which bears -  
5.4" Ash, S 09° 57' 21" W, 15.54'  
mkd. NC 1/16 S 4 B.T.  
12.6" Maple, N 44° 23' 39" W, 30.78'  
mkd. NC 1/16 S 4 PS 841 B.T.

(CONTINUATION OF NARRATIVE)

E-W Centerline, Sec. 4 -

12. EC 1/16 Corner

Set 1" x 36" I. rod 4" high from which bears -  
16" S. pine, S 21° 07' E, 25.44'  
mkd. EC 1/16 S 4 PS 841 B.T.  
14" D. fir, N 68° 00' E, 16.73' to top of face  
mkd. EC 1/16, S 4 PS 841 B.T.

13. WC 1/16 Corner

Set 1" x 36" I. rod 4" high from which bears -  
8.3" Chinqupin, N 34° 27' E, 26.25' to top of face  
mkd. WC 1/16 S 4 PS 841 B.T.  
14" D. fir, S 52° 38' E, 13.32'  
mkd. WC 1/16 S 4 PS 841 B.T.

14. Ref. Point located 383.10' East of 1/4 Cor., Sec. 4-5  
located on the E-W centerline

Set 1" x 36" I. rod flush in gravel from which bears -  
21" I. cedar, S 63° 13' W, 39.5' to tree center  
E 538 CopCo. pole, N 07° 44' E, 23.87 to pole center.

Other Monuments, Section 4

15. SE 1/16 Corner

Set 1" x 36" I. rod 4" high from which bears -  
17" D. fir, N 82° 12' 42" W, 30.04'  
mkd. SE 1/16 S 4 PS 841 B.T.  
15.6 D. fir, N 32° 13' 18" E, 11.30'  
mkd. SE 1/16 S 4 PS 841 B.T.

16. NW 1/16 Corner

Set 1" x 36" I. rod 4" high from which bears -  
13" D. fir, S 11° 16' 42" W, 69.6' to top face  
mkd. NW 1/16, S 4 PS 841 B.T.  
13.8" D. fir, S 64° 18' 18" E, 108.47' to top face  
mkd. NW 1/16 S 4 PS 841 B.T.

17. Points on South line of the Hamilton Addition monumented by  
1" x 36" I. rods 4" high at each of the 8 points.

Note - distances to B.T.'s measured to center of scribed faces unless  
noted differently. Trees measured at DBH all instances.

COMMENTS: this survey was initiated to clear up problems of trespass in the NW 1/4,  
Sec. 4 and became a rather large job when it was discovered the E 1/4  
Corner was missing at the time the C 1/4 Corner was set in C.S. 52/137;  
lacking the Sec. Corner of Section 3-4 it was necessary to traverse out  
the twp. line to the corner of Sections 1 and 2 and then in consideration  
of company ground in Sec. 2 and a long-range perspective of land ownership  
it was decided to monument township line points pertaining to T. 33 S.

