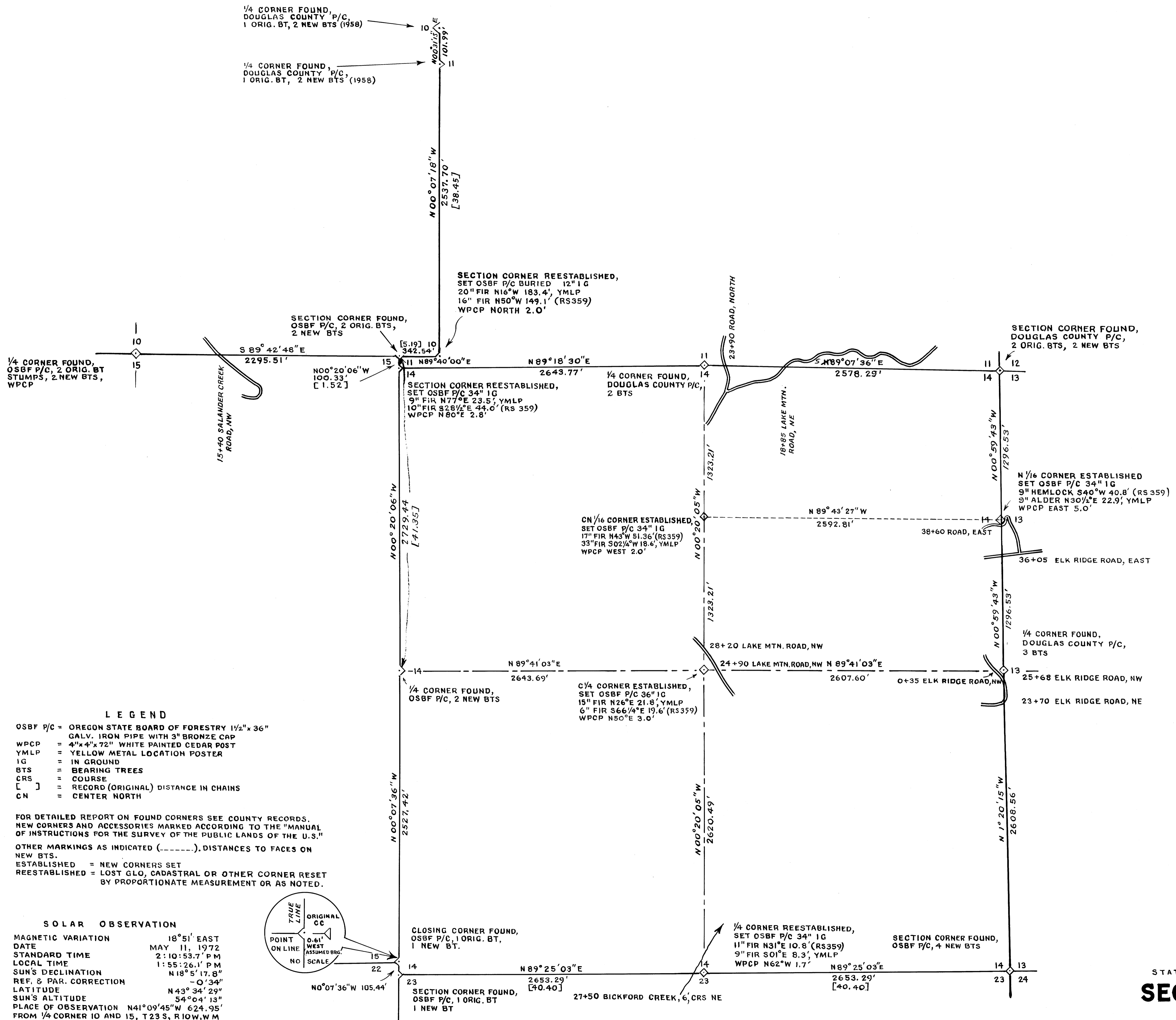


COUNTY SURVEYORS FILE DATA  
DO NOT REMOVE FROM OFFICE

FILED  
MAY 2 1973  
COUNTY SURVEYORS  
DOUGLAS COUNTY, OREGON



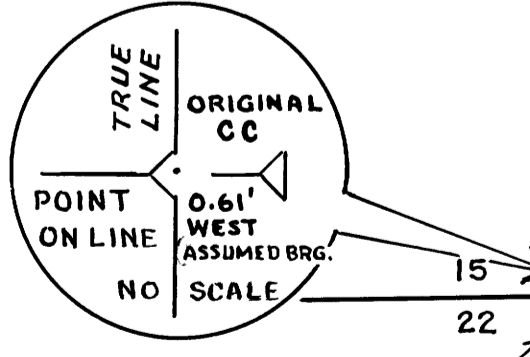
**LEGEND**

- OSBF P/C = OREGON STATE BOARD OF FORESTRY 1/2" x 36"
- GALV. IRON PIPE WITH 3" BRONZE CAP
- WPCP = 4"x4"x72" WHITE PAINTED CEDAR POST
- YMLP = YELLOW METAL LOCATION POSTER
- IG = IN GROUND
- BTS = BEARING TREES
- CRS = COURSE
- [ ] = RECORD (ORIGINAL) DISTANCE IN CHAINS
- CN = CENTER NORTH

FOR DETAILED REPORT ON FOUND CORNERS SEE COUNTY RECORDS.  
NEW CORNERS AND ACCESSORIES MARKED ACCORDING TO THE "MANUAL OF INSTRUCTIONS FOR THE SURVEY OF THE PUBLIC LANDS OF THE U.S."  
OTHER MARKINGS AS INDICATED (-----). DISTANCES TO FACES ON NEW BTS.  
ESTABLISHED = NEW CORNERS SET  
REESTABLISHED = LOST GLO, CADASTRAL OR OTHER CORNER RESET BY PROPORTIONATE MEASUREMENT OR AS NOTED.

**SOLAR OBSERVATION**

MAGNETIC VARIATION 18°51' EAST  
DATE MAY 11, 1972  
STANDARD TIME 2:10:53.7 PM  
LOCAL TIME 1:55:26.1 PM  
SUN'S DECLINATION N18°5'17.8"  
REF. & PAR. CORRECTION -0'34"  
LATITUDE N43°34'29"  
SUN'S ALTITUDE 54°04'13"  
PLACE OF OBSERVATION N41°09'45"W 624.95'  
FROM 1/4 CORNER 10 AND 15, T23S, R10W, W4M



REGISTERED  
PROFESSIONAL  
LAND SURVEYOR  
*Arnold B. Gibson*  
OREGON  
NOV 4 1958  
ARNOLD B. GIBSON  
L.S.P.

SURVEY FOR:  
STATE OF OREGON - DEPARTMENT OF FORESTRY  
**SECTION 14, T23S, R10W, W4M**  
DOUGLAS COUNTY, OREGON  
THEODOLITE AND DISTANCE METER SURVEY BY: D. SMITH,  
W. COOK, R. SHEPARD, W. METCALF, S. NICHOLSON & S. CONOVER  
DRAWN BY: R. SHEPARD  
DECEMBER 8, 1972  
SCALE: 1"=400'

COUNTY SURVEYORS FILE DATA  
DO NOT REMOVE FROM OFFICE