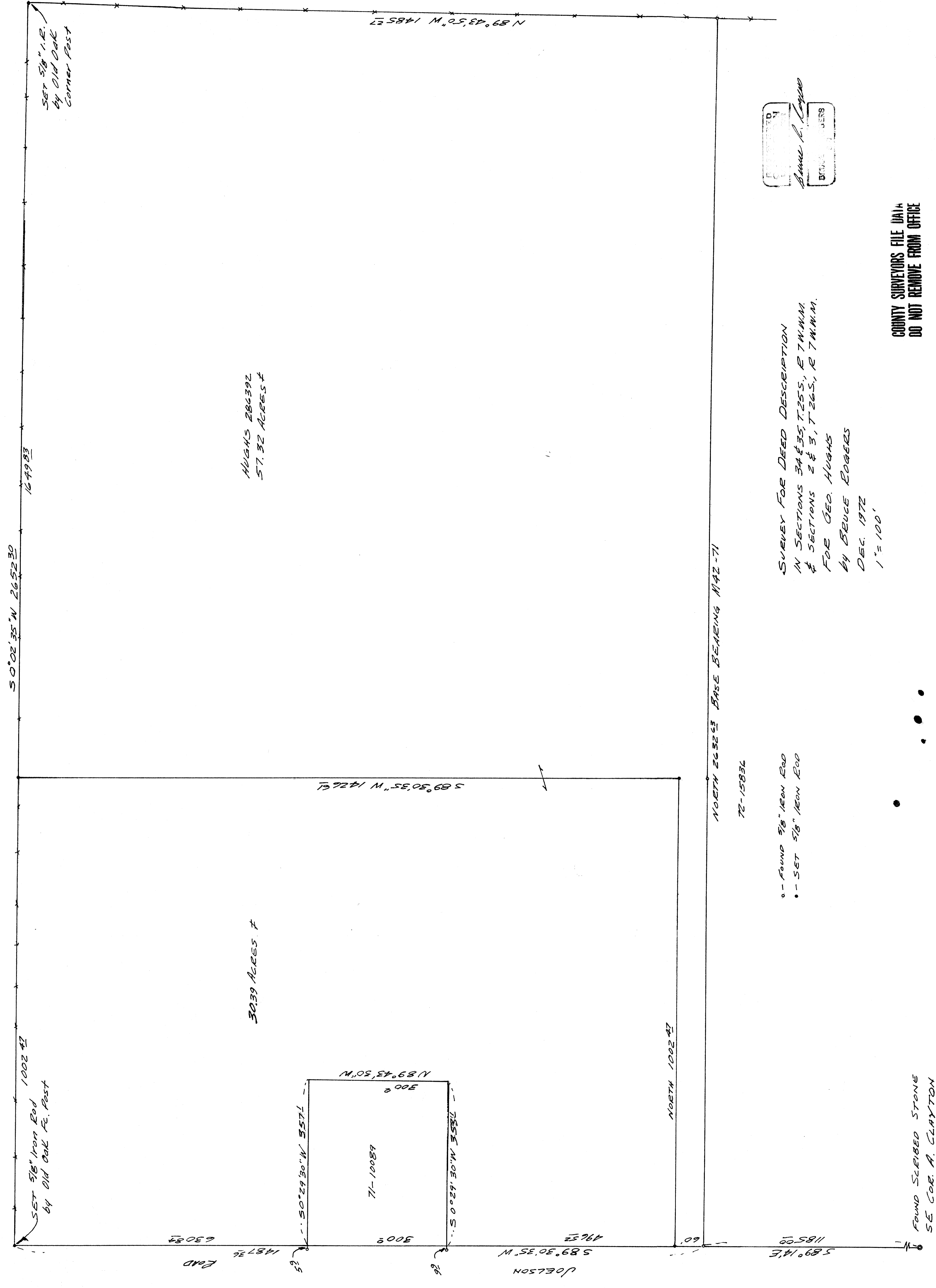


COUNTY SURVEYORS FILE DATA
DO NOT REMOVE FROM OFFICE

FILED
RECEIVED
DEC 2 11972
COUNTY SURVEYOR
DOUGLAS COUNTY, CT

MAP FILE M.49-2



S 0° 02' 35\" W 26522.30

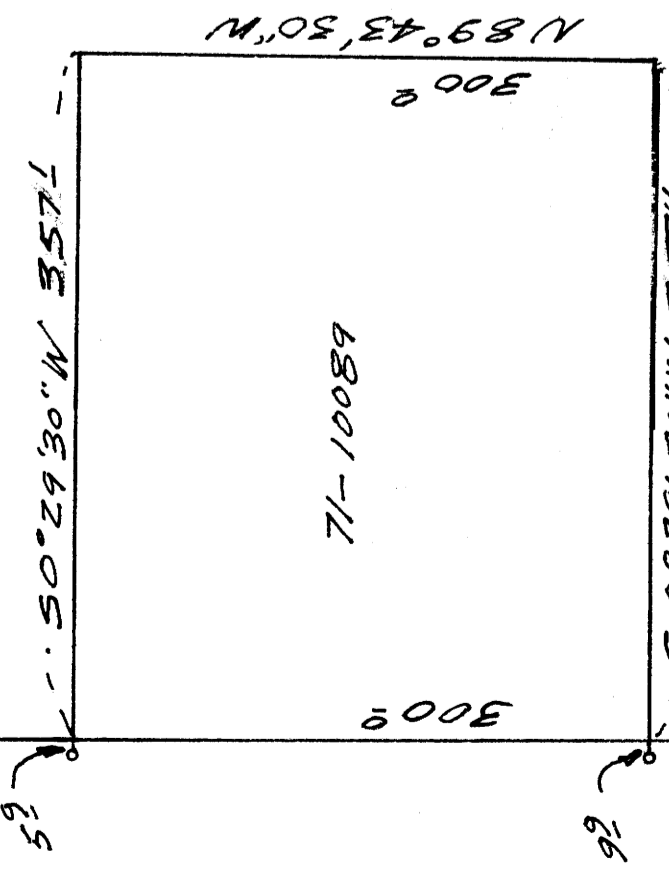
1002.42

SET 5/8\" IRON ROD
BY OLD OAK R. POST

SET 5/8\" I.R.
BY OLD OAK
CORNER POST

HUGHS 286392
57.32 ACRES ±

3039 ACRES ±



71-10089

N 89° 43' 30\" W 300.0

71-10089

300.0

7155.5 N. 0° 02' 30\" S

DOELSON
S 89° 30' 35\" W 496.52

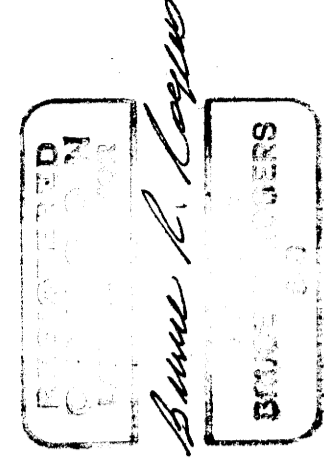
N 0° 02' 35\" E 1002.42

N 0° 02' 35\" E BASE BEARING MAR-71

72-15836

- - FOUND 5/8\" IRON ROD
- - SET 5/8\" IRON ROD

SURVEY FOR DEED DESCRIPTION
IN SECTIONS 34 & 35, T.25S., R.7W.N.M.
& SECTIONS 2 & 3, T.26S., R.7W.N.M.
FOR GEO. HUGHS
BY BRUCE ROGERS
DEC. 1972
1\" = 100'



COUNTY SURVEYORS FILE DATA
DO NOT REMOVE FROM OFFICE

FOUND SLEIBED STONE
SE COR. A. CLAYTON
D.L.C. #41