

Fd. brass cap set by
County Surveyor in 1958
From which a:

24" original pine BT stump
Now badly rotted, scribe vis.
Bears N12°W, 19.1 ft.
30" original Douglas fir BT
Good bark scribing vis.
Bears S48°E, 75.2 ft. to face
10" chinquapin BT
Bears S43°W, 35.6 ft.
12" white fir BT
Bears N71°W, 54.6 ft.
12" Douglas fir BT
Bears S30°E, 10.3 ft.
(Record 9.9 ft.)
6" white fir BT
Bears N73°E, 28.7 ft.

Fd. 1" iron pipe set by
H.W. Johnstone
From which a:

10" original white oak BT
Now down and rotted
Bears S35°W, 45.5 ft.
12" original white oak BT
Now down and rotted
Bears N42°E, 23.8 ft.
16" Douglas fir BT
Bears S43°W, 39.6 ft.
(Record 40.0 ft.)
10" Douglas fir BT
Bears N55°E, 9.7 ft.

Fd. brass cap set by
County Surveyor in 1964
From which a:

34" original Douglas fir BT
Possible bark scribe
Bears N35°E, 39.6 ft.
10" Douglas fir BT
Bears N87°E, 8.8 ft.
10" Douglas fir BT
Bears N43°W, 10.0 ft.
8" Douglas fir BT
Bears S52°W, 12.4 ft.
13" Douglas fir BT
Bears S19°E, 26.7 ft.

Fd. brass cap set by
County Surveyor in 1965
From which a:

20" original Douglas fir BT
Bark scribes vis.
Bears N10°W, 9.2 ft.
32" original Douglas fir BT
Partial bark scribes vis.
Bears S38°W, 19.8 ft.
36" Douglas fir BT
Bears N61°E, 13.9 ft.
13" Douglas fir BT
Bears S17°W, 32.9 ft.
(Record S24°W)

Fd. brass cap mkd.
County Surveyor's Office
T30S, R8W
S7, S8, S18, S17 1965
From which a:

30" original Douglas fir BT
Bears N15°E, 14.5 ft.
15" original Douglas fir BT
Bears S58°E, 48.2 ft.
26" original Douglas fir BT
Bears S25°W, 36.4 ft.
(Record S35°W, 38.3 ft.)
46" original Douglas fir BT snag
Bears N50°W, 25.1 ft.
10" chinquapin BT stump
Bears S70°W, 5.3 ft.
8" chinquapin BT
Bears N3°W, 31.7 ft.
(Record N2°E)
8" white fir BT
Bears N69°E, 40.7 ft.
(Record N71°E)
11" hemlock BT
Bears S78°E, 37.5 ft.
16" hemlock BT
Bears S70 1/4°W, 22.9 ft.

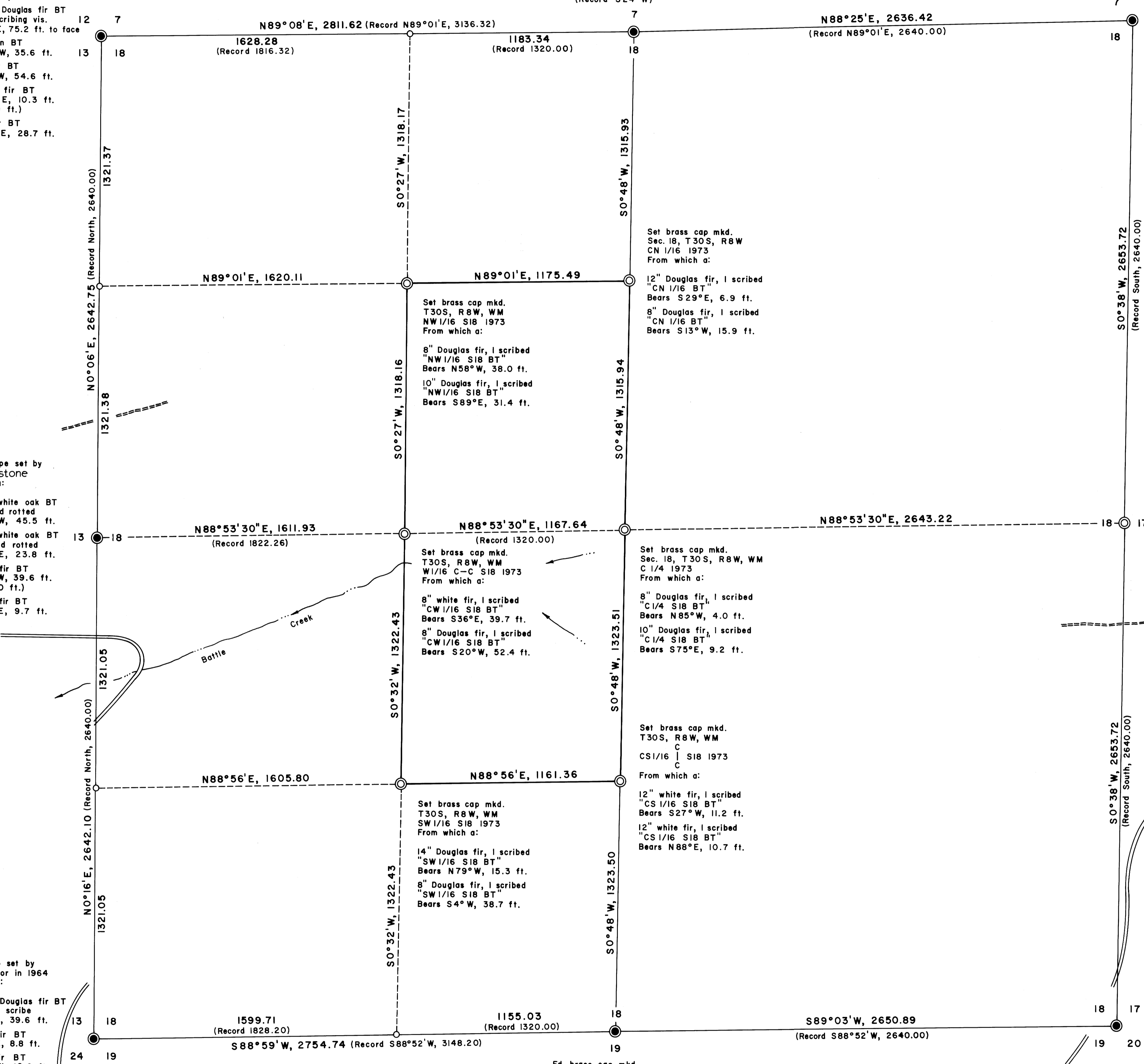
No original evidence found.

Set brass cap mkd.
T30S, R8W, WM
1/4S S18, S17 1973
From which a:

22" Douglas fir, 1 scribed
1/4 S17 BT
Bears N14°E, 8.8 ft.
14" Douglas fir, 1 scribed
1/4 S18 BT
Bears N29 1/2°W, 6.3 ft.
A well marked North-South
property line runs 7.0 ft.
West of this corner.

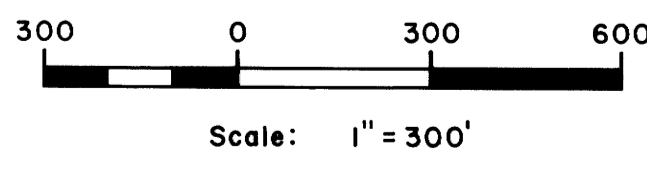
Fd. brass cap set by
County Surveyor in 1965
From which a:

22" original madrone BT
Scribes vis.
Bears S11°E, 38.9 ft.
16" original madrone BT
Now down but with definite
old rotted face
Bears S44°W, 38.9 ft.
15" white fir BT
Bears N59°W, 9.6 ft.
20" cedar BT
Bears N11°E, 31.5 ft.
15" white fir BT
Bears S1°E, 19.0 ft.
9" Douglas fir BT
Bears S31°W, 23.0 ft.

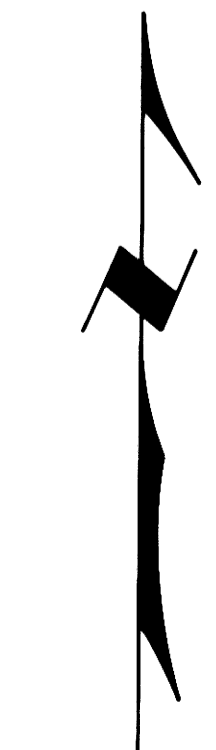


PROPERTY LINE SURVEY IN
SECTION 18, T.30 S., R.8 W., W. M.
For: Moore Mill and Lumber Co.
Bandon, Oregon

By: Shaner Engineering, Roseburg, Oregon
March 19, 1973



Fd. brass cap mkd.
County Surveyor's Office
T30S, R8W
W.C. 10 ft. West to
1/4 S S18, S19 1965
From which a:
44" cedar corner tree
Bears West, 10.0 ft.
10" white fir BT
Bears N14°W, 26.5 ft.
11" hemlock BT stump
Bears S5°E, 19.8 ft.
And from the face of the
44" cedar corner tree a:
27" original cedar BT
Bears S40°E, 17.8 ft. to face
46" original Douglas fir BT
Bears N18°W, 28.4 ft. to face
(Record N26°W)



LEGEND

Corner found	●
Corner set	○
Corner computed, not set	○
True line, marked with blazes and red paint	———
Random line only, no true line marked	- - - - -
Line computed, not run	— · — · —
Stream	~~~~~
Rocked road	====
Dirt road	=====