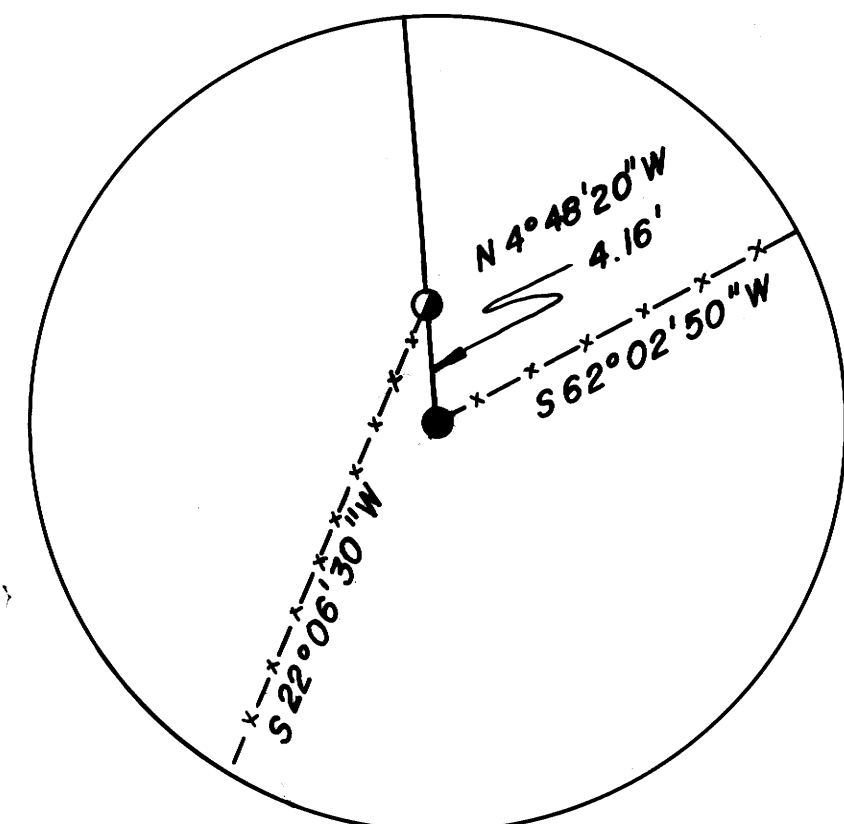
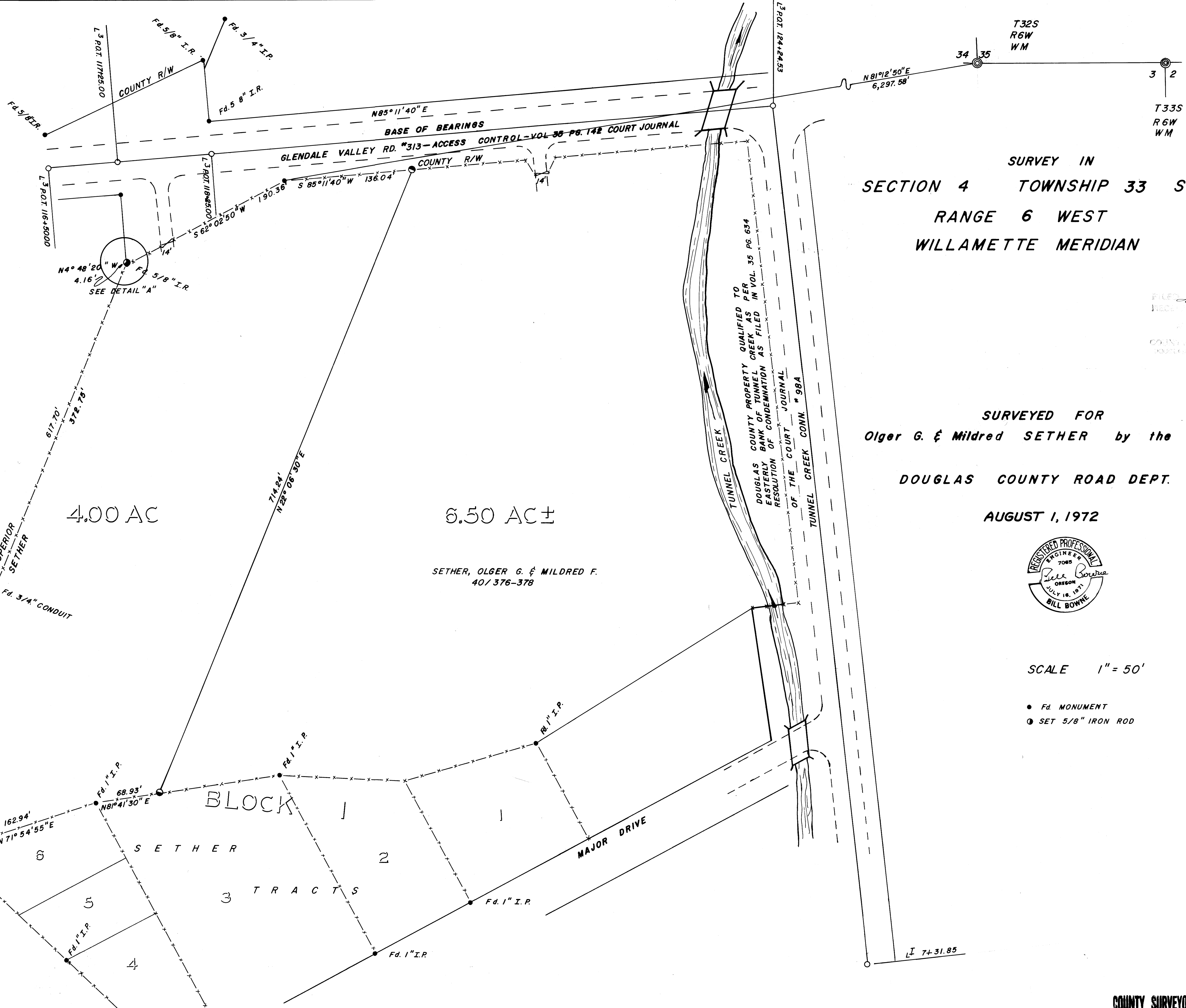


COUNTY SURVEYORS FILE DATA
DO NOT REMOVE FROM OFFICE



DETAIL "A"



SURVEY IN
SECTION 4 TOWNSHIP 33 SOUTH
RANGE 6 WEST
WILLAMETTE MERIDIAN

SURVEYED FOR
Olger G. & Mildred SETHER by the

DOUGLAS COUNTY ROAD DEPT.

AUGUST 1, 1972



SCALE 1" = 50'

- Fd. MONUMENT
- SET 5/8" IRON ROD

COUNTY SURVEYORS FILE DATA
DO NOT REMOVE FROM OFFICE