

COUNTY SURVEYORS FILE DATA
DO NOT REMOVE FROM OFFICE

Fd. brass cap mkd.
U. S. Dept. of the Interior
T 25 S., R 8 W
1/4 S13, S 24 1964 Cadastral Survey
Bur. of Land Manag.
From which a:

24" Douglas fir BT
Face grown over
Bears N 14 1/2° E, 33.7 ft.
20" Douglas fir BT
Face grown over
Bears S 50° E, 30.1 ft. (record 29.7 ft.)

Fd. brass cap mkd.
U. S. Dept. of the Interior
W 1/16 S13, S 24 1964 Cadastral Survey
Bur. of Land Management
From which a:

12" Douglas fir BT
Face grown over
Bears S 13 3/4° E, 12.3 ft. (record 11.9 ft.)
8" Douglas fir BT
Face grown over
Bears N 38 1/2° E, 28.9 ft. (record 28.4 ft.)

Handwritten initials and date: *AS 7/7*

Fd. brass cap mkd.
U. S. Department Of The Interior
T 25 S., R 8 W
1/4 S 23, S 24 1965 Cadastral Survey
Bur. of Land Management
From which a:

28" white fir BT
Bears S 42 1/2° E, 15.2 ft.
14" white fir BT
Now blown down
Bears N 88 1/2° W, 16.5 ft.
10" Douglas fir, 1 scribed
"1/4 S 23 BT"
Bears S 40 1/2° W, 25.6 ft.

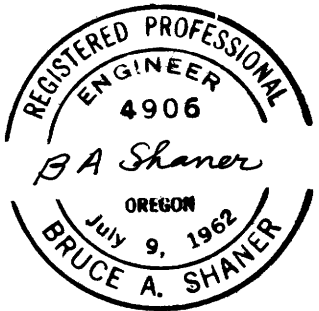
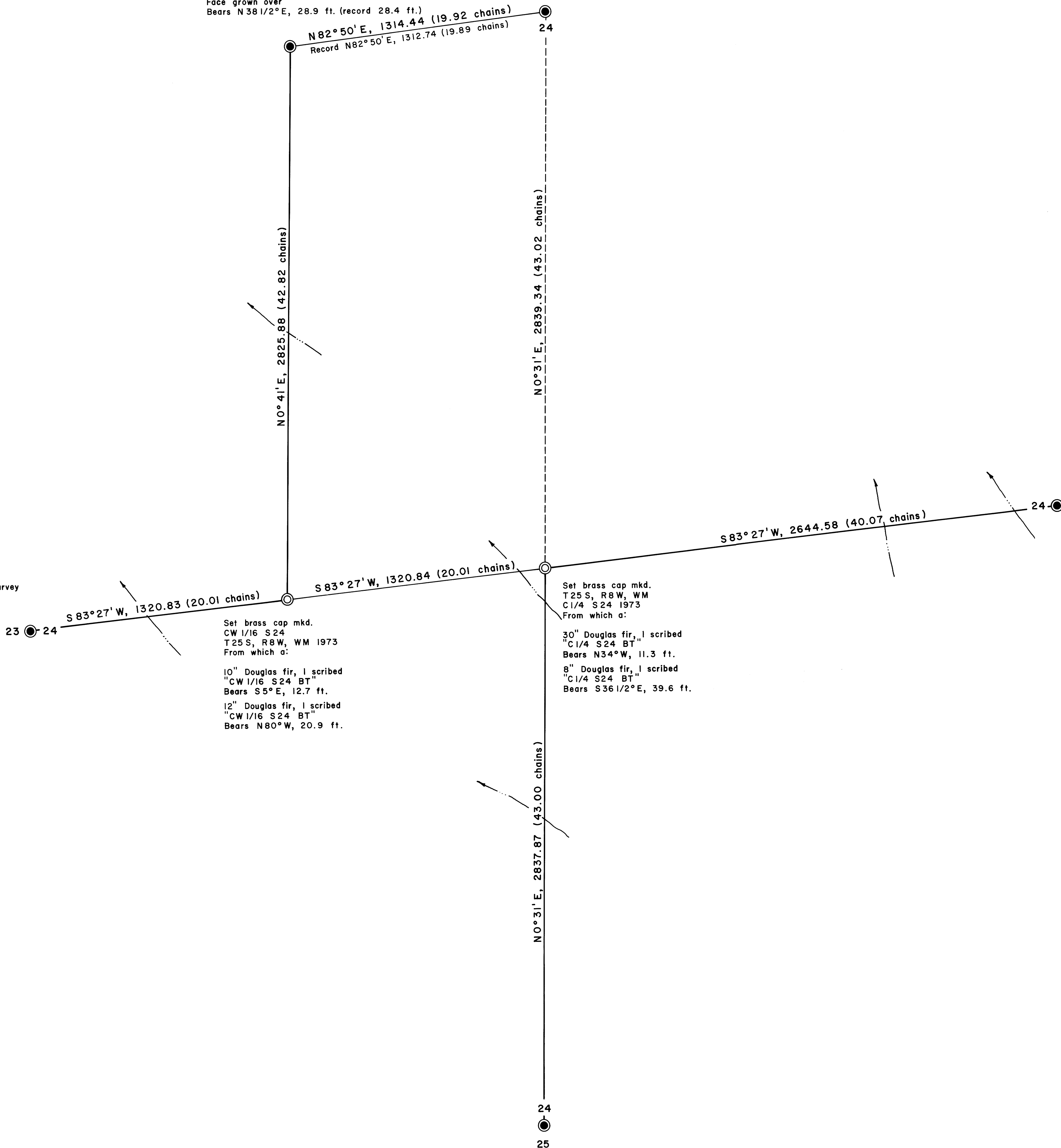
Set brass cap mkd.
CW 1/16 S 24
T 25 S., R 8 W, WM 1973
From which a:

10" Douglas fir, 1 scribed
"CW 1/16 S 24 BT"
Bears S 5° E, 12.7 ft.
12" Douglas fir, 1 scribed
"CW 1/16 S 24 BT"
Bears N 80° W, 20.9 ft.

Set brass cap mkd.
T 25 S., R 8 W, WM
C 1/4 S 24 1973
From which a:

30" Douglas fir, 1 scribed
"C 1/4 S 24 BT"
Bears N 34° W, 11.3 ft.
8" Douglas fir, 1 scribed
"C 1/4 S 24 BT"
Bears S 36 1/2° E, 39.6 ft.

Fd. brass cap mkd.
U. S. Dept. of Int.
T 25 S., R 8 W
1/4 S 24 1964
Bur. of Land Man.
From which a:
8" Douglas fir BT
Bears S 44° W, 46.2 ft.
8" madrone BT
Bears N 41 1/2° W, 19.1 ft.



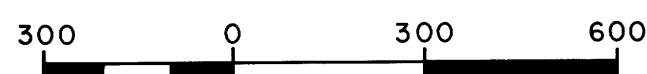
Bearings based on record bearing of North line Section 24.

PROPERTY LINE SURVEY OF
SECTION 24, T. 25 S., R. 8 W., W. M.
U. S. Bureau of Land Management
Roseburg, Oregon District

Shaner Engineering

Scale: 1" = 300' February 5, 1973

Contract No. 53500-CT2-293 (N)



Scale: 1" = 300'

LEGEND

- Corner found
- Corner set
- True line marked with aluminum tags
- Random line only
- Line computed, not run
- Stream

COUNTY SURVEYORS FILE DATA
DO NOT REMOVE FROM OFFICE

M 49 - 13