

COUNTY SURVEYORS FILE DATA  
DO NOT REMOVE FROM OFFICE

# SURVEY TO SET PROPERTY CORNERS

## SITUATED IN SEC. 23, T.28S., R.8W., W.M.

### FOR: LARRY THOMAS

### BY: BAUGHMAN SURVEYING SERVICE

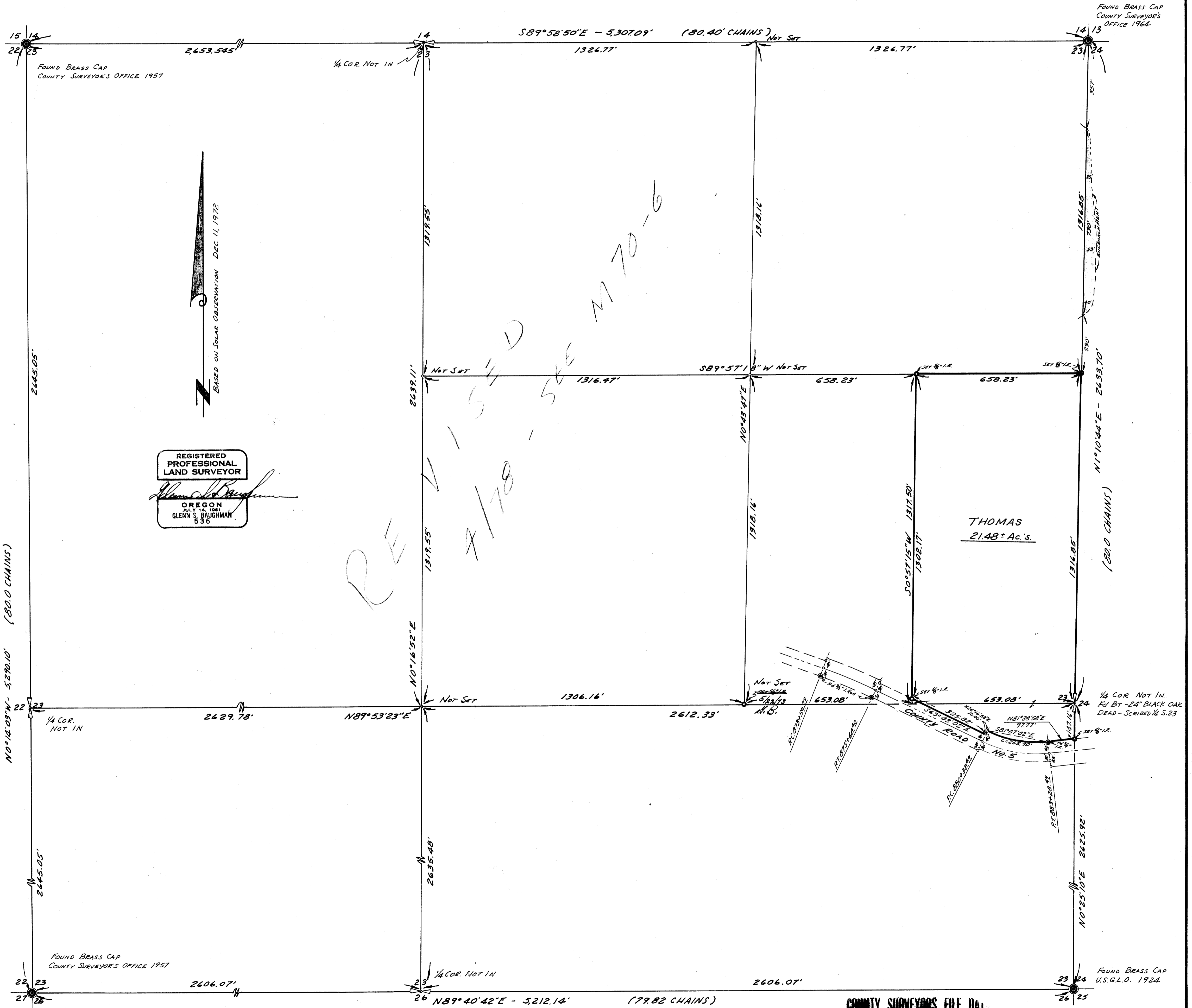
JANUARY 1973

SCALE: 1" = 200'

FILED  
RECEIVED

FEB 2 1973

COUNTY SURVEYOR  
DOUGLAS COUNTY, ORE.



COUNTY SURVEYORS FILE DATA  
DO NOT REMOVE FROM OFFICE