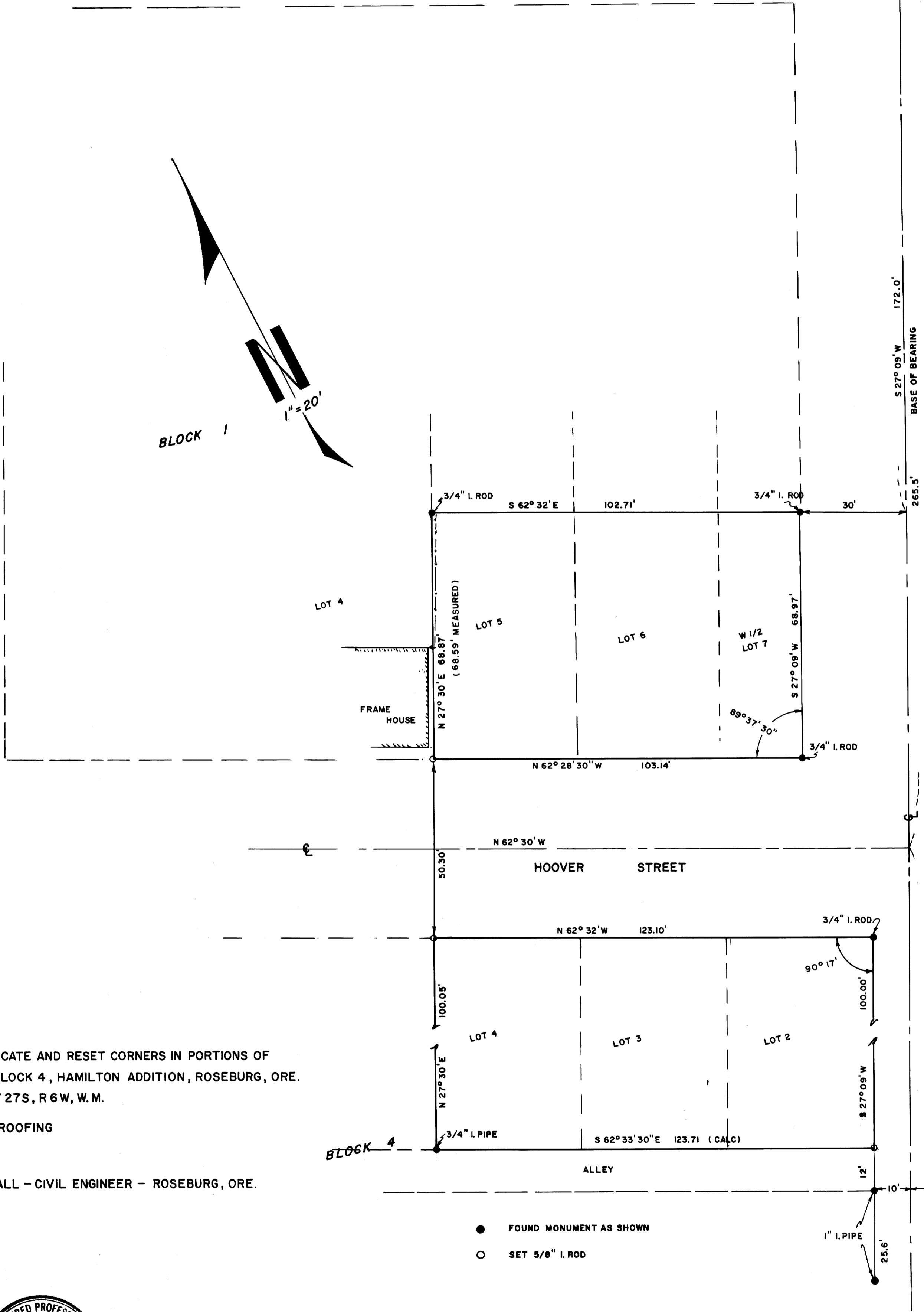


FILED
RECEIVED

JUN 7 1973

COUNTY SURVEYOR
DOUGLAS COUNTY, ORE.

MOSHER STREET S 62° 32' E MONUMENT



SURVEY TO LOCATE AND RESET CORNERS IN PORTIONS OF
BLOCK 1 AND BLOCK 4, HAMILTON ADDITION, ROSEBURG, ORE.
SECTION 24, T 27S, R 6W, W.M.

FOR DOUGCO ROOFING

JUNE, 1973

BY HAROLD BALL - CIVIL ENGINEER - ROSEBURG, ORE.

- FOUND MONUMENT AS SHOWN
- SET 5/8" I. ROD

NOTE —
 SEE M 6-71, M33-73 & M 27-51
 BEARINGS AND DISTANCES ARE RECORD
 RESET CORNERS WERE DOUBLE CHAINED EXCEPT S.E. COR. LOT 2
 ANGLES TURNED AS SHOWN



COUNTY SURVEYORS FILE DATA
DO NOT REMOVE FROM OFFICE