

SURVEY FOR PROPERTY CORNERS IN SEC. 14, T.28S., R.6W., W.M. FOR E. L. WHITE BY BAUGHMAN SURVEYING SERVICE MAY 1973

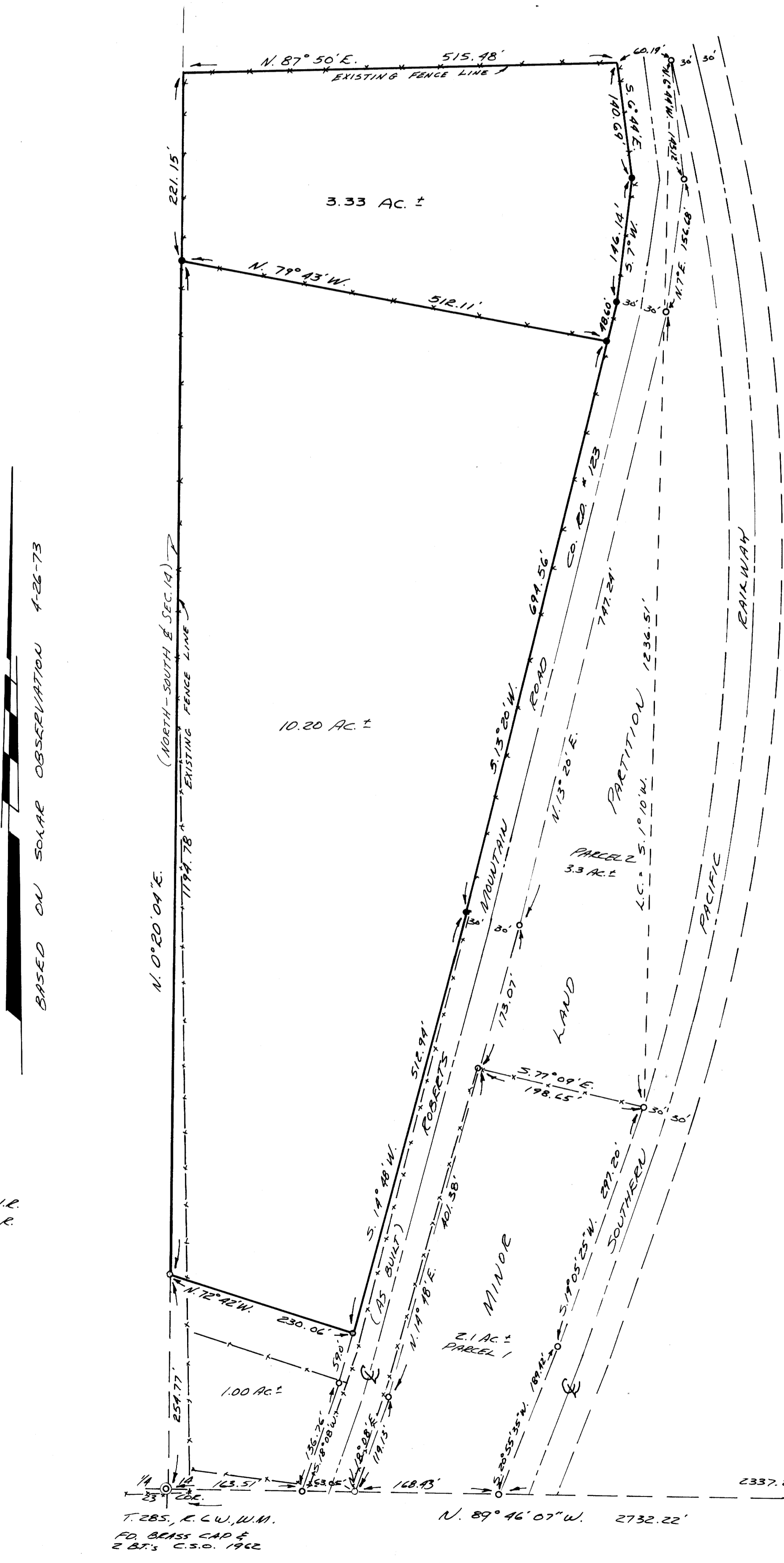
FILED
RECEIVED

JUN 1 1973

COUNTY SURVEYOR
DOUGLAS COUNTY, ORE.

SCALE 1"=100'

COUNTY SURVEYORS FILE DATA
DO NOT REMOVE FROM OFFICE



BASED ON SOLAR OBSERVATION 4-26-73

LEGEND :

- SET 5/8" I.R.
- FD. 7/8" I.R.

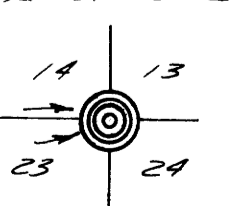
REGISTERED
PROFESSIONAL
LAND SURVEYOR

Eugene A. Bloom

OREGON
MAY 13, 1960
EUGENE A. BLOOM
492

T. 28S., R. 6W., W.M.
FD. BRASS CAP &
2 B.S. C.S.O. 1962

FD. 5/8" I.R. SET IN COCK.



T. 28S., R. 6W., W.M.