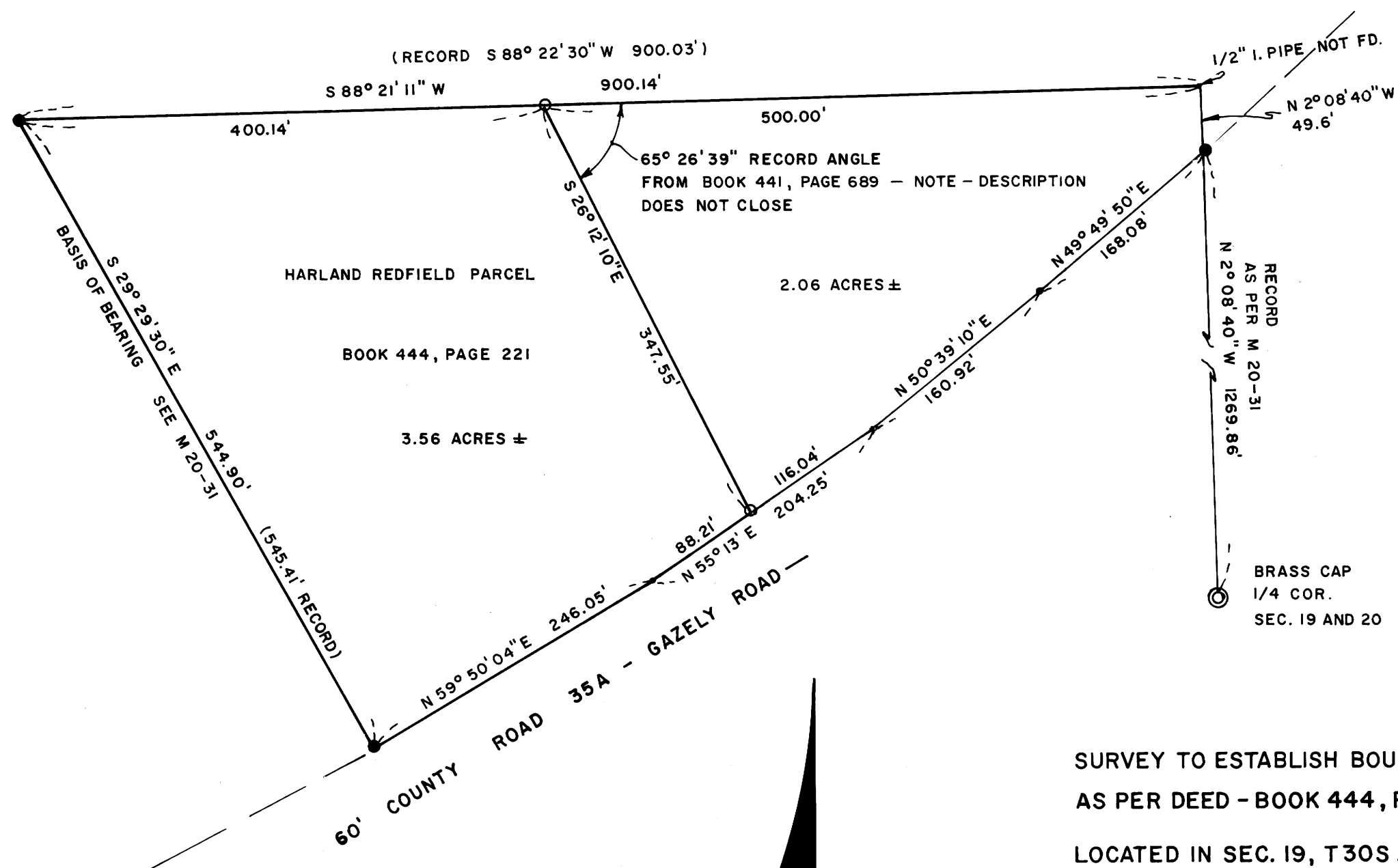


FILED
RECEIVED 2/4

JUN 4 1973

COUNTY SURVEYOR
DOUGLAS COUNTY, ORE.

MAP FILE M-78 - 61



HARLAND REDFIELD PARCEL
BOOK 444, PAGE 221
3.56 ACRES ±

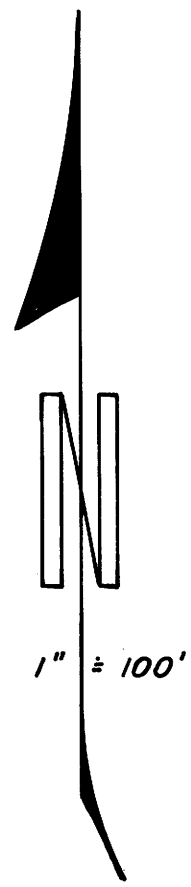
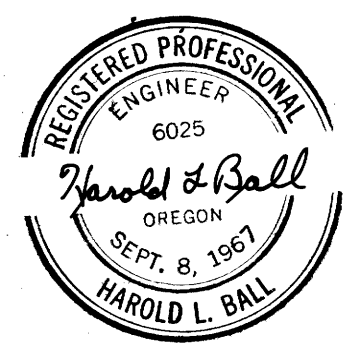
2.06 ACRES ±

60' COUNTY ROAD 35A - GAZELY ROAD

SURVEY TO ESTABLISH BOUNDARY LINES FOR HARLAND REDFIELD
AS PER DEED - BOOK 444, PAGE 221
LOCATED IN SEC. 19, T30S, R5W, W.M.
MAY, 1973
BY HAROLD BALL - CIVIL ENGINEER - ROSEBURG, ORE.

NOTE - BECAUSE OF OBVIOUS GROSS ERROR IN DEEDS ABOVE IN LOCATING THE
THE COMMON BOUNDARY LINE, IT IS RECOMMENDED THAT ADVICE FROM LEGAL
COUNSEL BE OBTAINED

- FOUND 3/4" I. ROD
- SET 5/8" I. ROD



COUNTY SURVEYORS FILE DATA
DO NOT REMOVE FROM OFFICE

MAP FILE M-78 - 61