

# SURVEY TO SET PROPERTY CORNERS IN LOTS 7 TO 12 INCL.-BLOCK 8, KINNEY'S IMPROVED PLAT-ROSEBURG, OREGON SITUATED IN SEC.'S 18 & 19, T.27S., R.5W.W.M.

FOR: PACIFIC POWER & LIGHT  
BY: BAUGHMAN SURVEYING SERVICE

COUNTY SURVEYORS FILE DATA  
DO NOT REMOVE FROM OFFICE

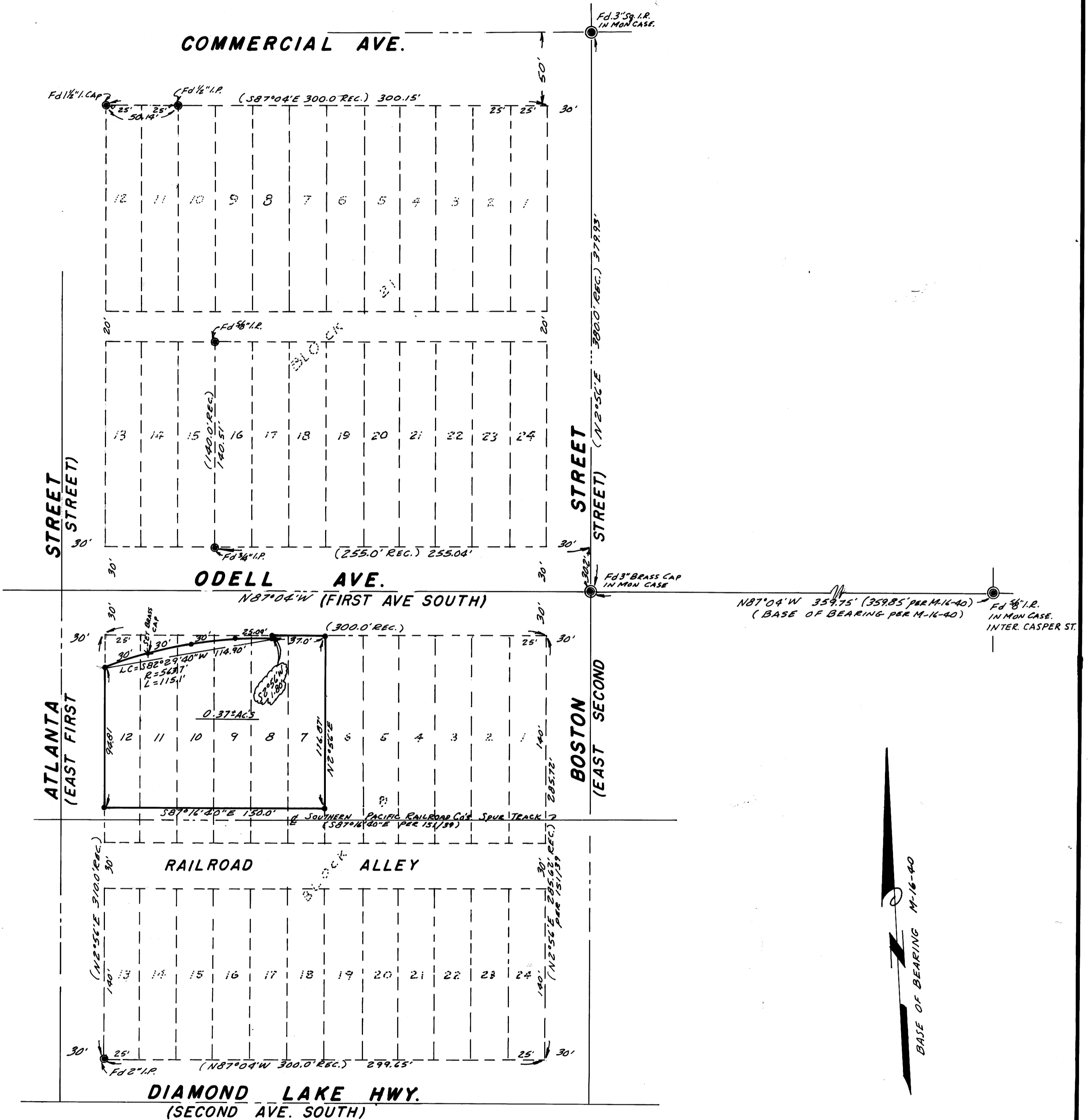
MAY 1973

SCALE: 1"=50'

FILED  
RECEIVED

JUN 1 1973

COUNTY SURVEYOR  
DOUGLAS COUNTY, ORE.



• — SET 3/8\" I.R.

REGISTERED  
PROFESSIONAL  
LAND SURVEYOR

*Eugene A. Bloom*  
OREGON  
MAY 15, 1960  
EUGENE A. BLOOM  
492