

COUNTY SURVEYORS FILE DATA
DO NOT REMOVE FROM OFFICE

SURVEY FOR DEED DESCRIPTION
IN SEC. 14, T26S, R6W. W. M.

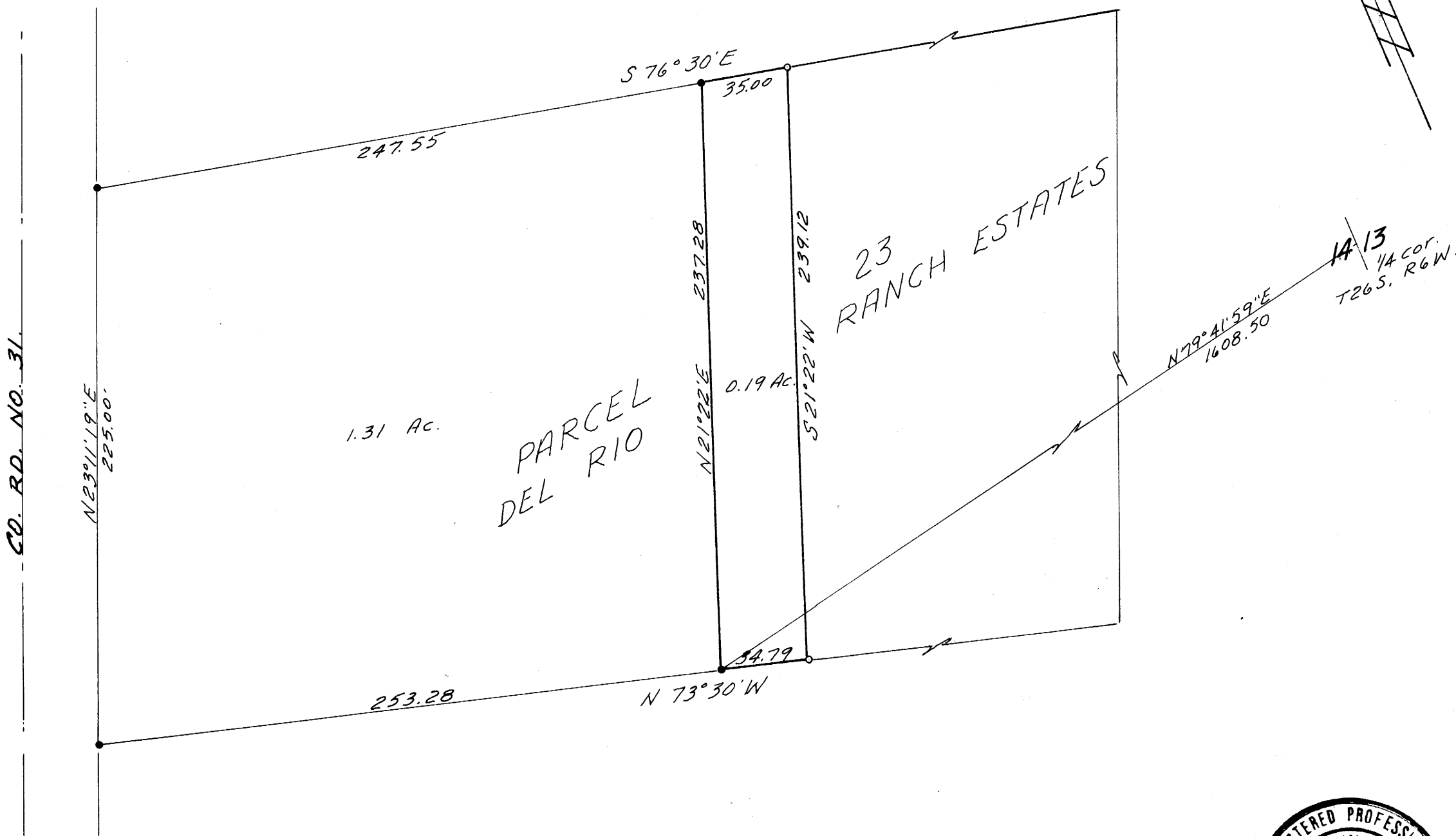
SURVEYED FOR - R. H. HARRELL
SURVEYED BY - W. S. BARNES

MAY 1973
SCALE 1" = 50'

FILED
RECEIVED

MAY 30 1973

COUNTY SURVEYOR
DOUGLAS COUNTY, ORE.



- 3/4" iron rods found
 - 5/8" " " set
- Base bearing taken from south line of Parcel 23 DEL RIO R.E.S.
See M 48 - 60



MAP FILE M 48 - 53