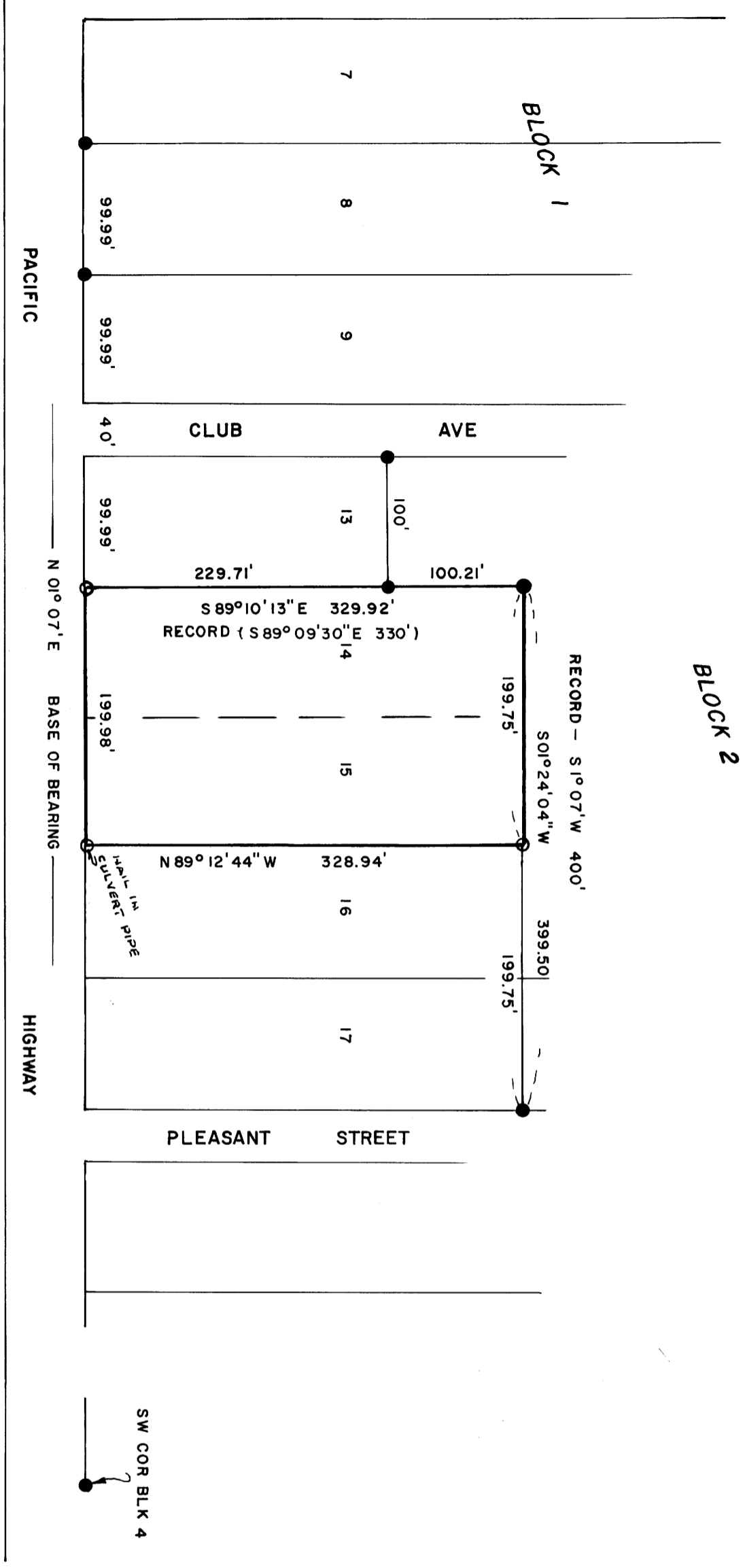


COUNTY SURVEYORS FILE DATA  
DO NOT REMOVE FROM OFFICE



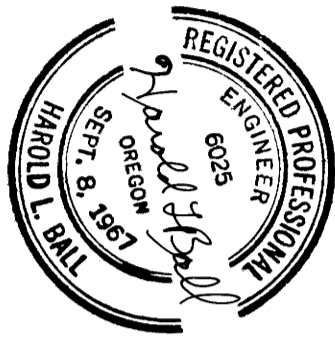
FILED  
MAY 25 1973  
COUNTY SURVEYOR  
DOUGLAS COUNTY, ORE.

MAP FILE M.48 - 52



- 5/8" I. ROD FOUND
- 5/8" I. ROD SET

NOTE  
SEE CS - 55/60, 55/210  
M 37 - 49



SURVEY TO SET PROPERTY CORNERS OF LOTS 14 AND 15, BLOCK 2  
FAIRACRES, DOUGLAS CO. ORE. SEC. 36, T26S, R6W, W.M.  
SURVEYED FOR W. J. LANE  
MAY, 1973  
BY HAROLD BALL - CIVIL ENGINEER - ROSEBURG

MAP FILE M.48 - 52