

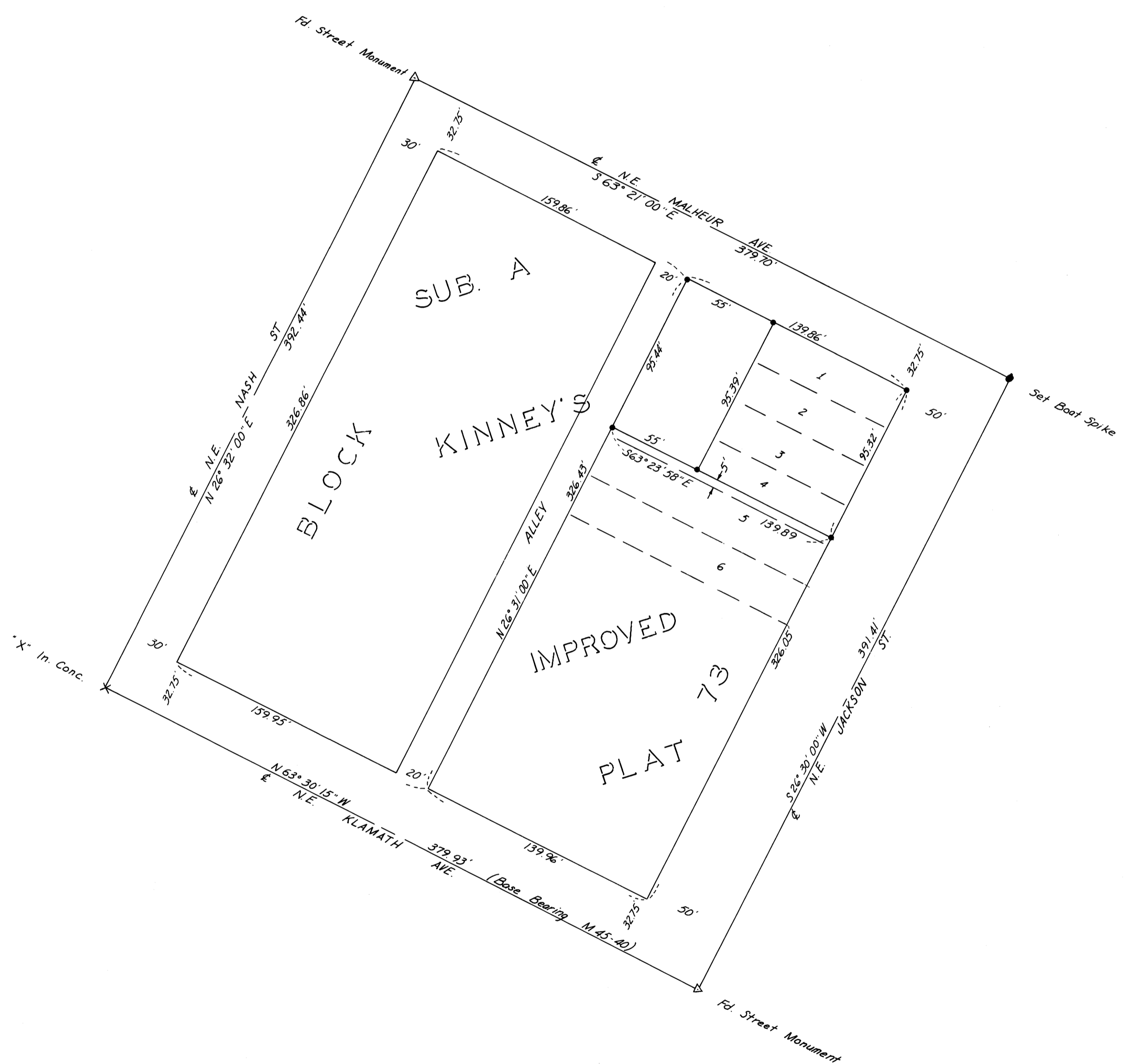
COUNTY SURVEYORS FILE DATA
DO NOT REMOVE FROM OFFICE

SURVEY IN BLOCK 73, SUBDIVISION "A", KINNEY'S IMPROVED PLAT
SECTION 18, T.27 S., R.5 W., W.M.
Surveyed for - Dallas Horn
Surveyed by - Don E. Garrett

March 1973

Scale 1" = 50'

• - Denotes 5/8" Iron Rod Set



REGISTERED
PROFESSIONAL
LAND SURVEYOR

OREGON
JULY 14, 1961
DON E. GARRETT
544