

COUNTY SURVEYORS FILE DATA  
DO NOT REMOVE FROM OFFICE

# SURVEY FOR DEED DESCRIPTION

IN SEC. 4, T29S, R6W. W.M.

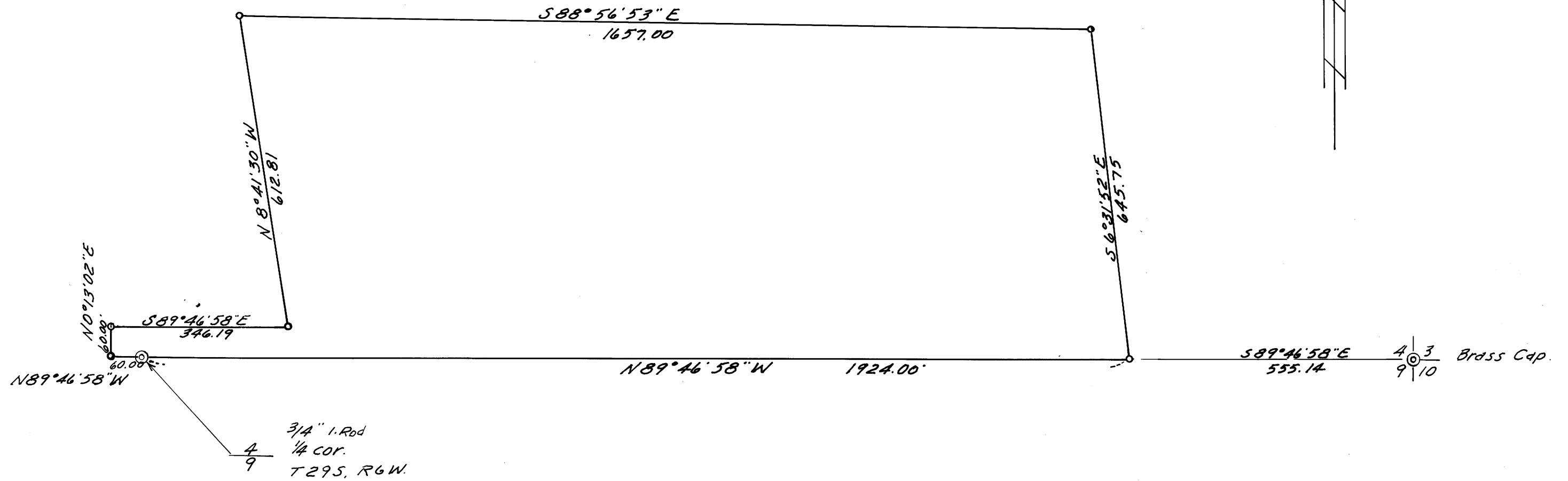
SURVEYED FOR - WARREN DICK.  
SURVEYED BY - W.S. BARNES

MAY 1973  
SCALE 1"=200'

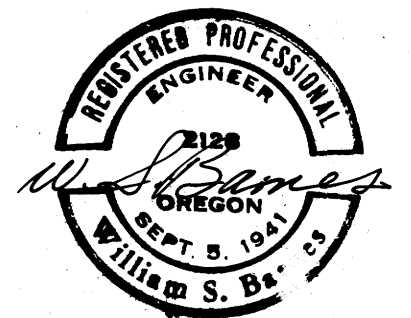
FILED  
RECEIVED 24

MAY 17 1973

COUNTY SURVEYOR  
DOUGLAS COUNTY, ORE.



o  $\frac{5}{8}$ " iron rods set.  
Base bearing taken from Sec. line  $\frac{4}{9}$ .



MAP FILE M48-45

MAP FILE M48-45