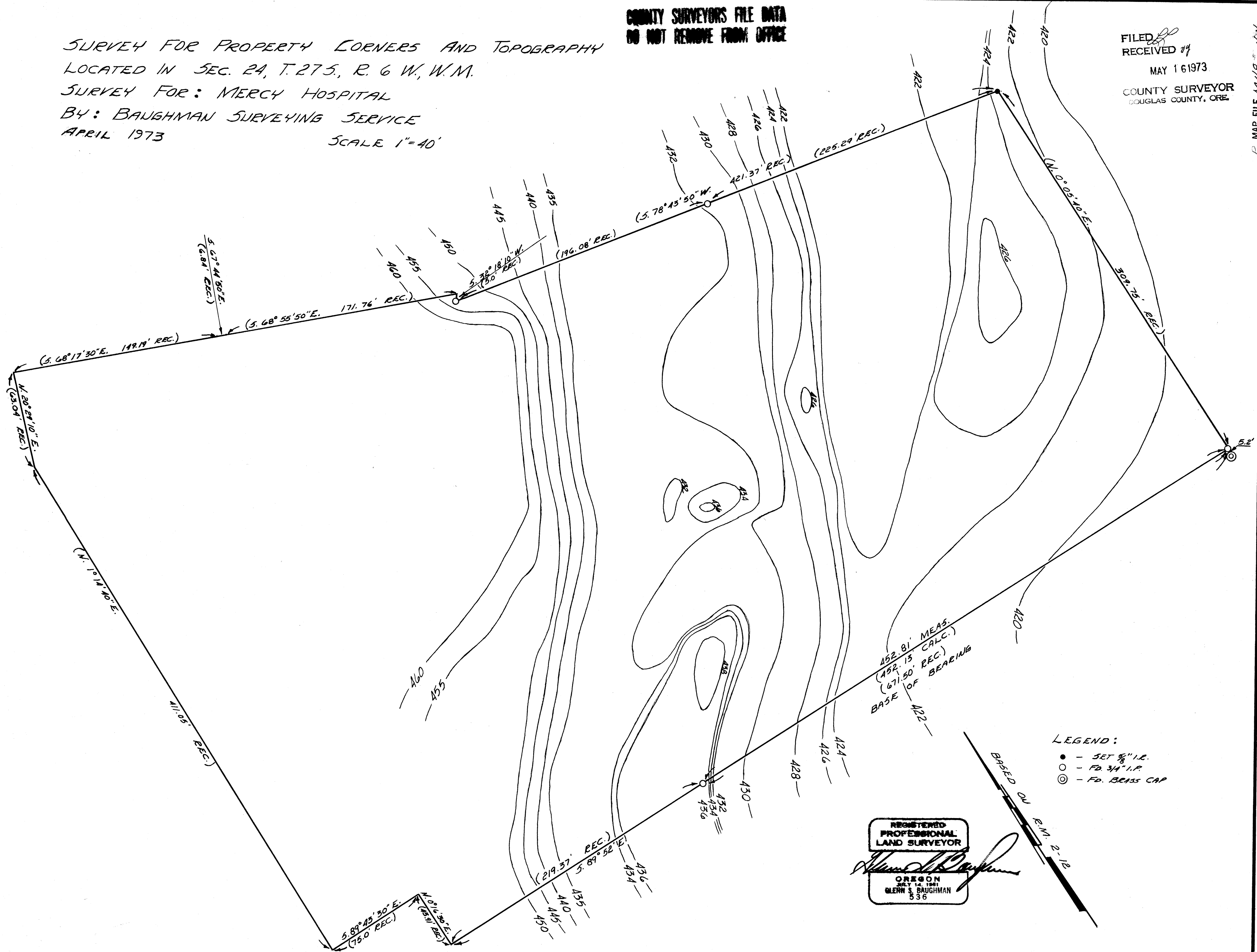


COUNTY SURVEYORS FILE DATA  
DO NOT REMOVE FROM OFFICE

FILED  
RECEIVED 17  
MAY 16 1973  
COUNTY SURVEYOR  
DOUGLAS COUNTY, ORE.

SURVEY FOR PROPERTY CORNERS AND TOPOGRAPHY  
LOCATED IN SEC. 24, T. 27 S., R. 6 W., W.M.  
SURVEY FOR: MERCY HOSPITAL  
BY: BAUGHMAN SURVEYING SERVICE  
APRIL 1973  
SCALE 1"=40'



REGISTERED  
PROFESSIONAL  
LAND SURVEYOR  
*Glenn S. Baughman*  
OREGON  
JULY 14, 1961  
GLENN S. BAUGHMAN  
536

LEGEND:  
● - SET 5/8" I.R.  
○ - FD. 3/4" I.P.  
⊙ - FD. BRASS CAP

BASED ON  
B.M. 2-12

MAP FILE 2278-17

MAP FILE 2278-17