

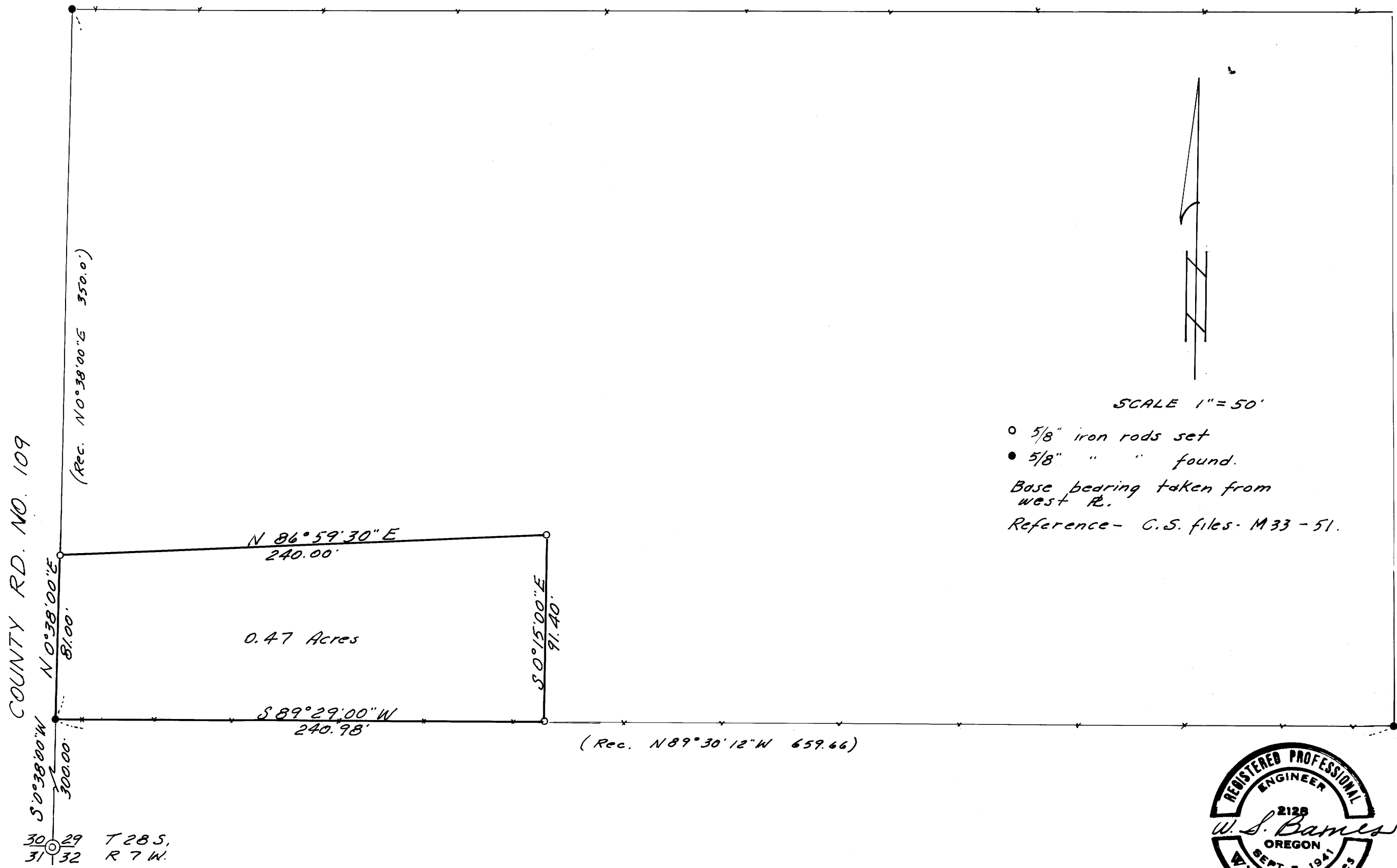
COUNTY SURVEYORS FILE DATA
DO NOT REMOVE FROM OFFICE

SURVEY FOR DEED DESCRIPTION
IN SEC. 29, T28S, R7W. W.M.
SURVEYED FOR - D. MAISEBACH
SURVEYED BY - W.S. BARNES
MAY 1973

FILED *LL*
RECEIVED *27*

MAY 10 1973

COUNTY SURVEYOR
DOUGLAS COUNTY, ORE.



P MAP FILE M48-40

MAP FILE M48-40