

SURVEY IN SECTION 29, T26S, R3W, WM.
 Surveyed for Adrain Standley by Victor M. McLind
 May 1973

COUNTY SURVEYORS FILE DATA
 DO NOT REMOVE FROM OFFICE

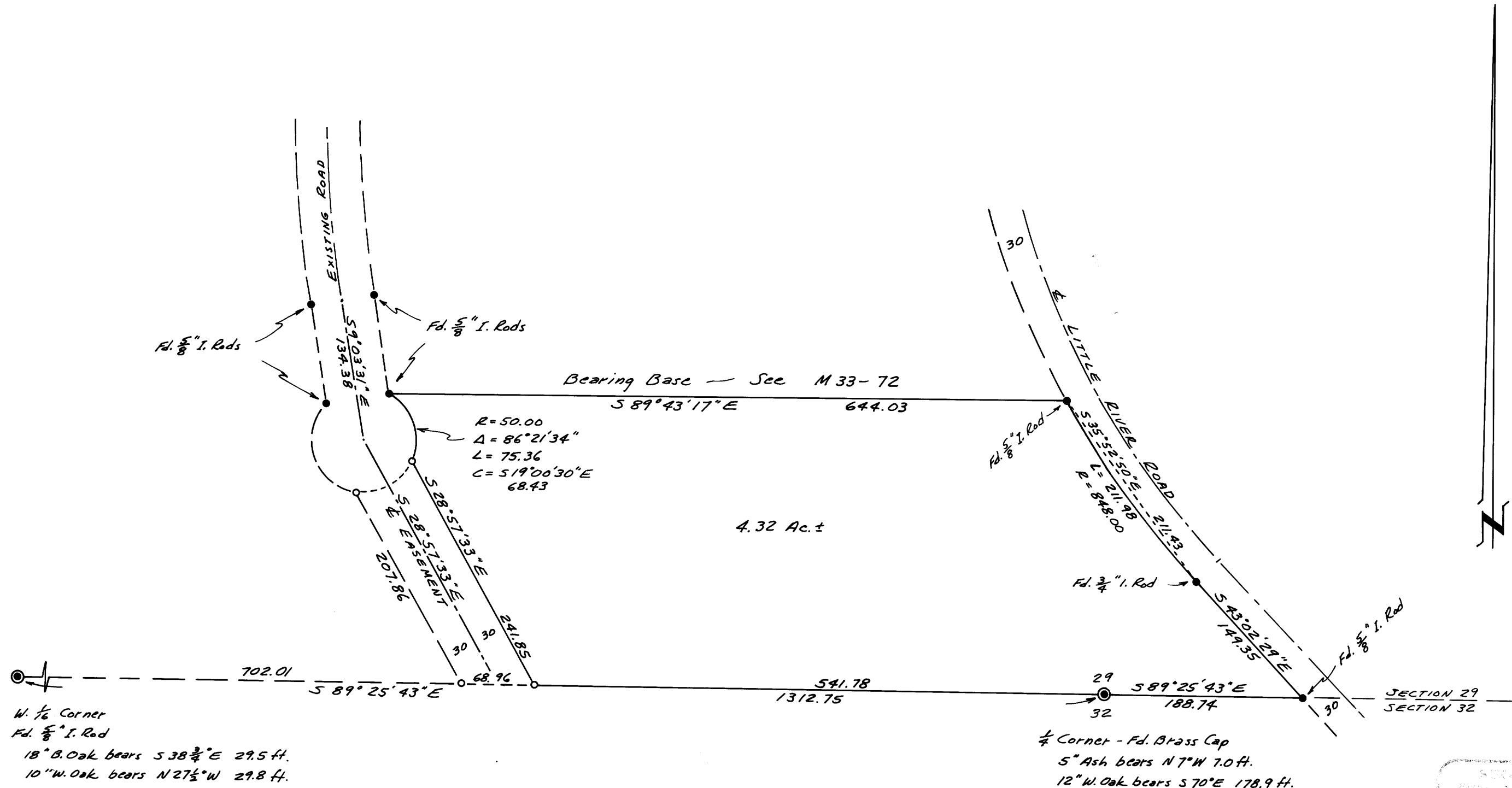
FILED *LM*
 RECEIVED *24*

MAY 3 1973

COUNTY SURVEYOR
 DOUGLAS COUNTY, ORE.

Scale: 1"=100'

o — Indicates Set $\frac{5}{8}$ " x 30" Iron Rod



Victor M. McLind

MAP FILE M48-36

MAP FILE M48-36