

COUNTY SURVEYORS FILE DATA  
DO NOT REMOVE FROM OFFICE

FILED  
RECEIVED 24

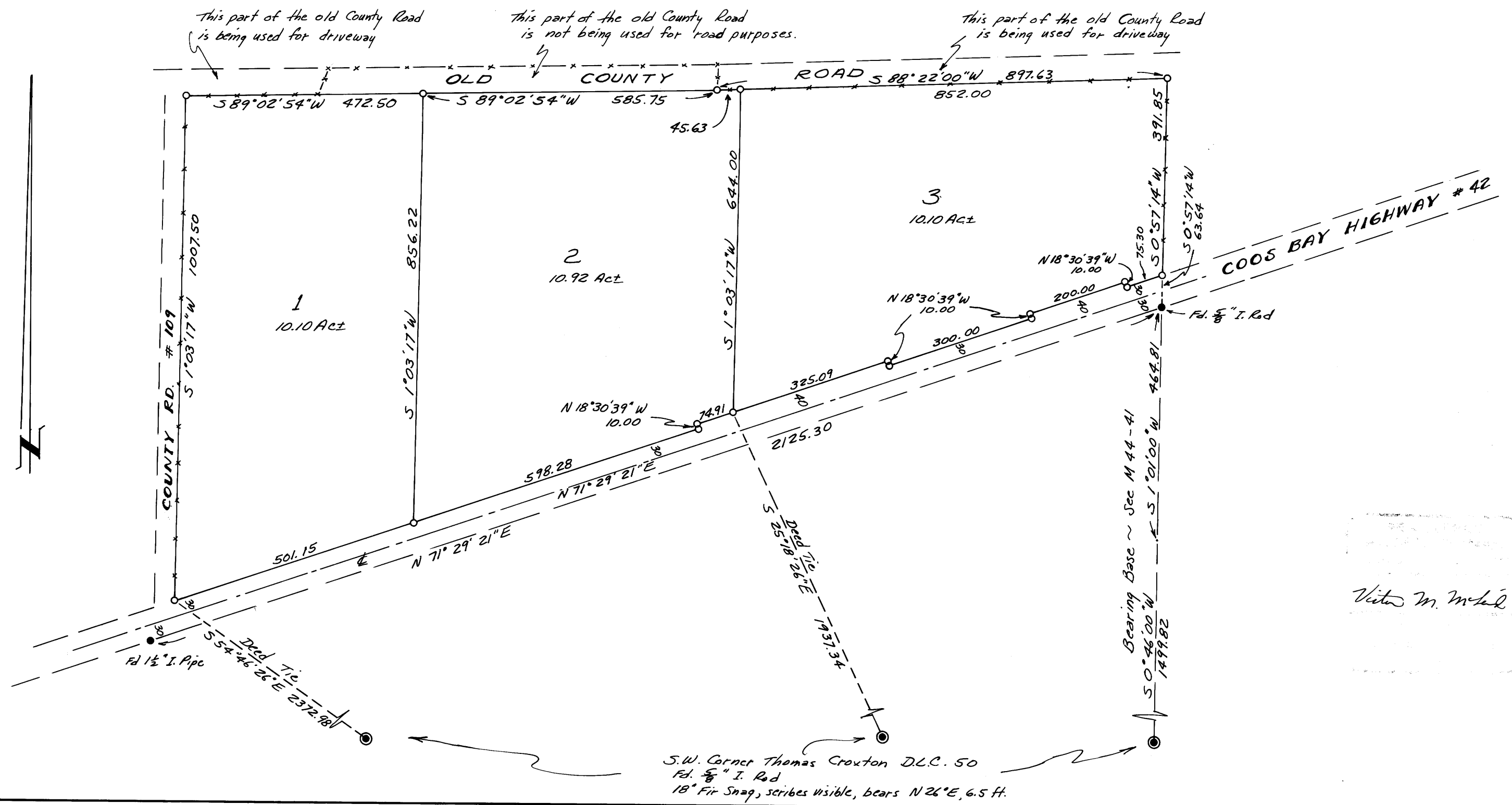
APR 30 1973

COUNTY SURVEYOR  
DOUGLAS COUNTY, ORE.

SURVEY IN D.L.C. 51, SEC. 28, T28S, R7W, W.M.  
Surveyed for Cyril Phillips by Victor M. McLind  
April, 1973

Scale: 1" = 200'

o ~ Indicates Set 5/8" x 30" Iron Rod



Victor M. McLind

M48 - 32

M48 - 32