

COUNTY SURVEYORS FILE DATA
DO NOT REMOVE FROM OFFICE

FILED *[Signature]*
RECEIVED *[Signature]*

APR 26 1973

COUNTY SURVEYOR
DOUGLAS COUNTY, ORE.

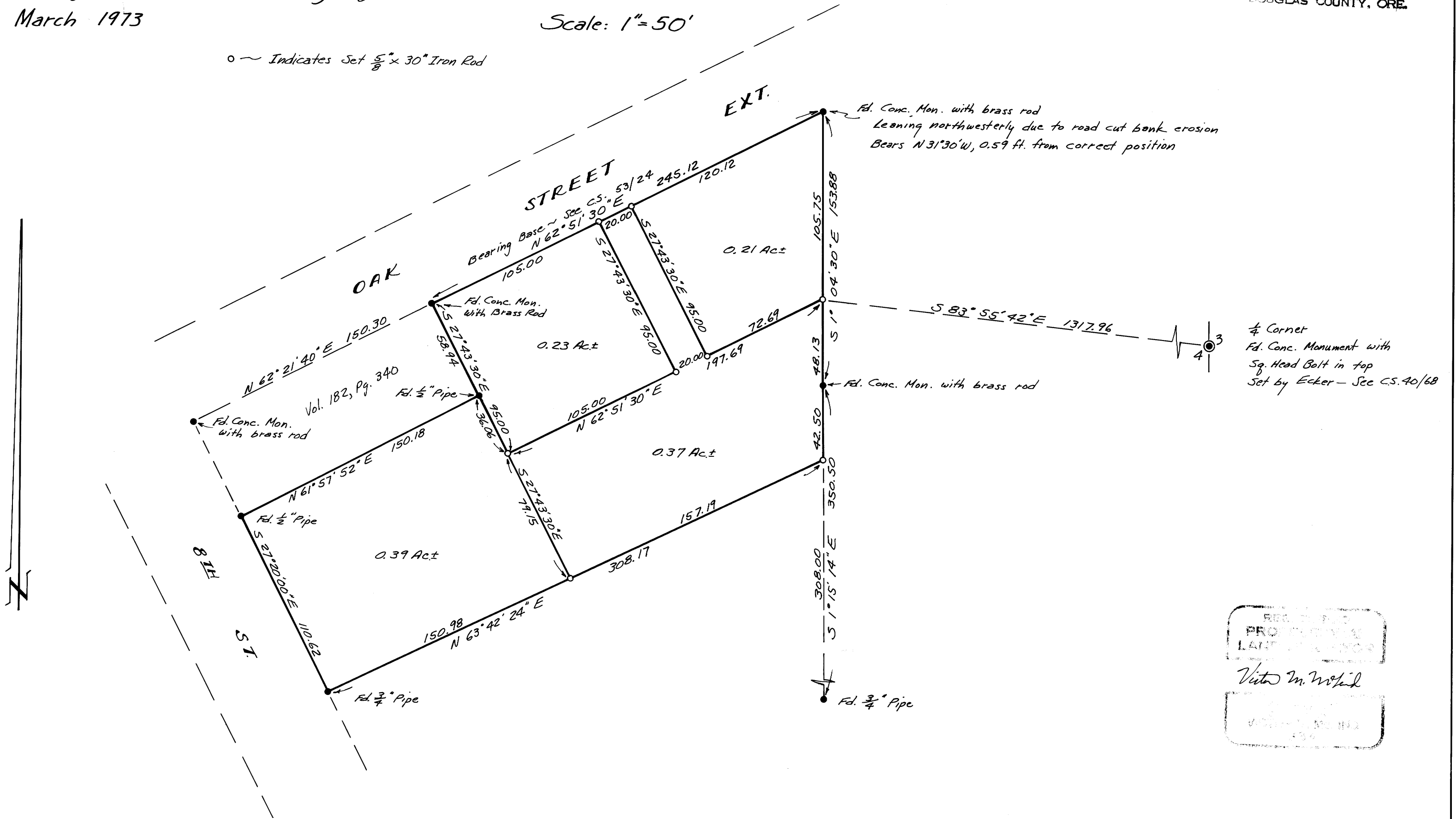
SURVEY IN SECTION 4, T25S, R5W, W.M.
IN THE CITY OF OAKLAND, OREGON

Surveyed for Ernest Cherry by Victor M. McLind

March 1973

Scale: 1" = 50'

o ~ Indicates Set $\frac{5}{8}$ " x 30" Iron Rod



P MAP FILE M48-30

MAP FILE M48-30