

SURVEY TO SET PROPERTY CORNERS IN SEC. 32, T30S, R6W, W.M.

Surveyed for Roy Leipnik and Gary Hewer by Victor M. McLind

April 1973 COUNTY SURVEYORS FILE DATA

NOT REMOVE FROM OFFICE

o ~ Indicates Set $\frac{5}{8}$ " x 30" I. Rod, unless otherwise noted
 - - - Indicates nothing set

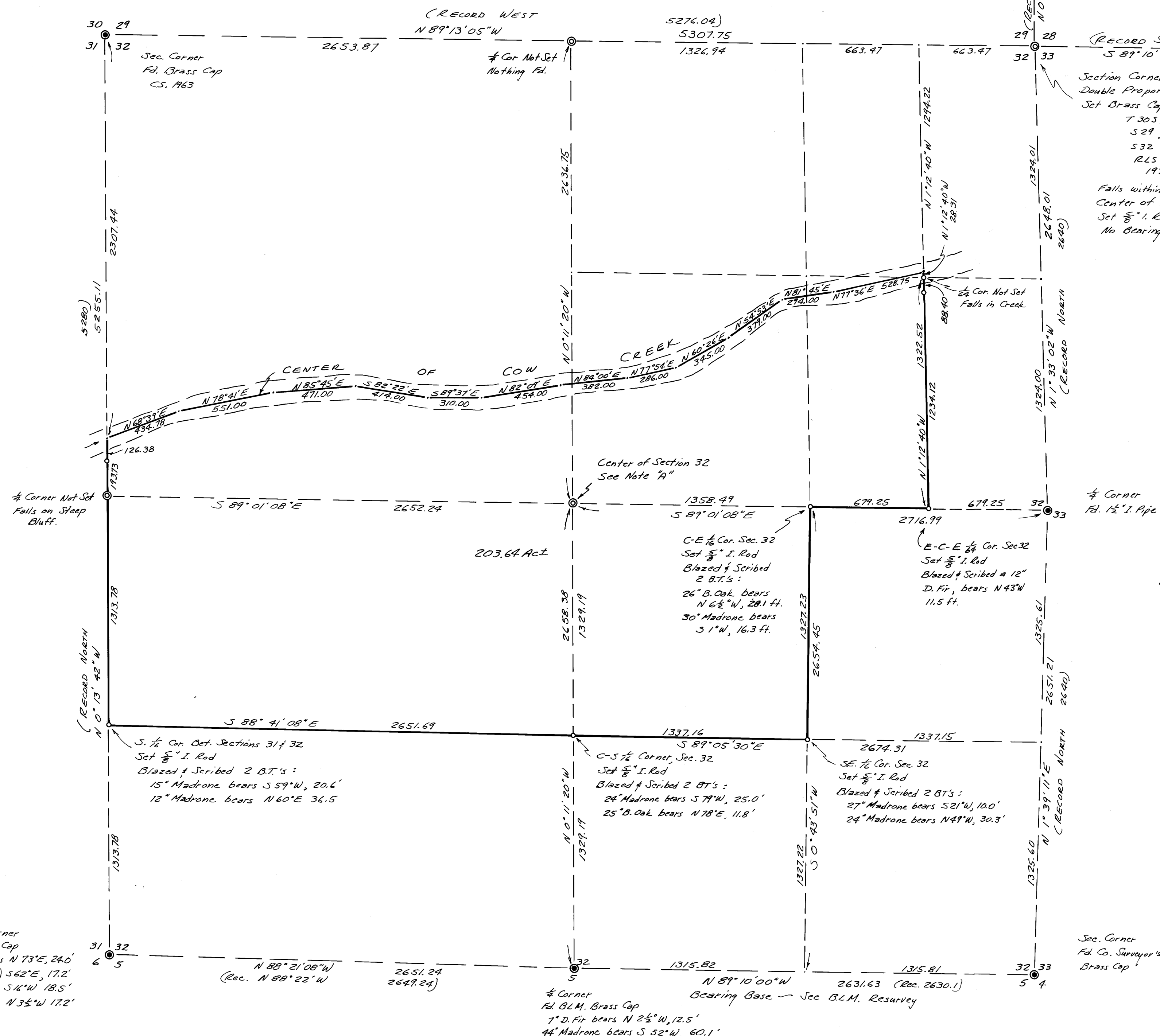
Scale: 1" = 400'

Fd. Co. Surveyor
 Brass Cap
 6" Madrone bears N 18° E, 18.7 ft.
 Shell of large Madrone bears
 S 87° E, 50.0 ft.

FILED
 RECEIVED 27

APR 23 1973

COUNTY SURVEYOR
 DOUGLAS COUNTY, ORE.



(RECORD S 89° 49' E 5323.56)
 S 89° 10' 52" E 5355.62

Section Corner Set by
 Double Proportionate Measurement
 Set Brass Cap Stamped
 T 30S, R 6W
 S 29 528
 S 32 533
 R 25 934
 1973

Sec. Corner
 Fd. Co. Surveyor's
 Brass Cap & B.T.'s

Falls within R.R. R/W & lies South of R/W fence 3.6 ft.
 Center of R.R. tracks bears South 26.0 ft.
 Set $\frac{5}{8}$ " I. Rod as bearing object, North 5000 ft.
 No bearing trees available.

Corner Not Set
 Falls on Steep
 Bluff.

Center of Section 32
 See Note "A"

Corner
 Fd. 1 1/2" I. Pipe

C-E 1/4 Cor. Sec. 32
 Set $\frac{5}{8}$ " I. Rod
 Blazed & Scribed
 2 B.T.'s:
 26" B. Oak bears
 N 6 1/2° W, 28.1 ft.
 30" Madrone bears
 S 1° W, 16.3 ft.

E-C-E 1/4 Cor. Sec. 32
 Set $\frac{5}{8}$ " I. Rod
 Blazed & Scribed a 12"
 D. Fir, bears N 43° W
 11.5 ft.

NOTE "A"

At center of Section 32, Set
 Brass Cap Stamped
 T 30S, R 6W
 C 1/4
 S 32
 R 25 934
 1973

Blazed & Scribed 2 B.T.'s as follows:
 48" Madrone bears N 4 1/2° W 88.5 ft.
 28" B. Oak bears S 1 1/2° E, 31.6 ft.

Sec. Corner
 Fd. Brass Cap
 10" B. Oak bears N 73° E, 24.0'
 8" D. Fir (Fallen) S 62° E, 17.2'
 18" D. Fir bears S 16° W 18.5'
 15" D. Fir bears N 3 1/2° W 17.2'

Corner
 Fd. BLM. Brass Cap
 7" D. Fir bears N 2 1/2° W, 12.5'
 44" Madrone bears S 52° W, 60.1'

Sec. Corner
 Fd. Co. Surveyor's
 Brass Cap

Victor M. McLind

MAP FILE M48-27

M48-27