

COUNTY SURVEYORS FILE DATA
DO NOT REMOVE FROM OFFICE

SURVEY FOR DEED DESCRIPTION
IN SEC. 24, T28S, R6W, W.M.

SURVEYED FOR - WARREN DICK
SURVEYED BY - W.S. BARNES

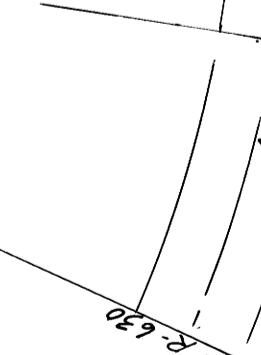
APRIL 1973
SCALE 1"=100'

COUNTY SURVEYOR
DOUGLAS COUNTY, ORE.

APR 17 1973

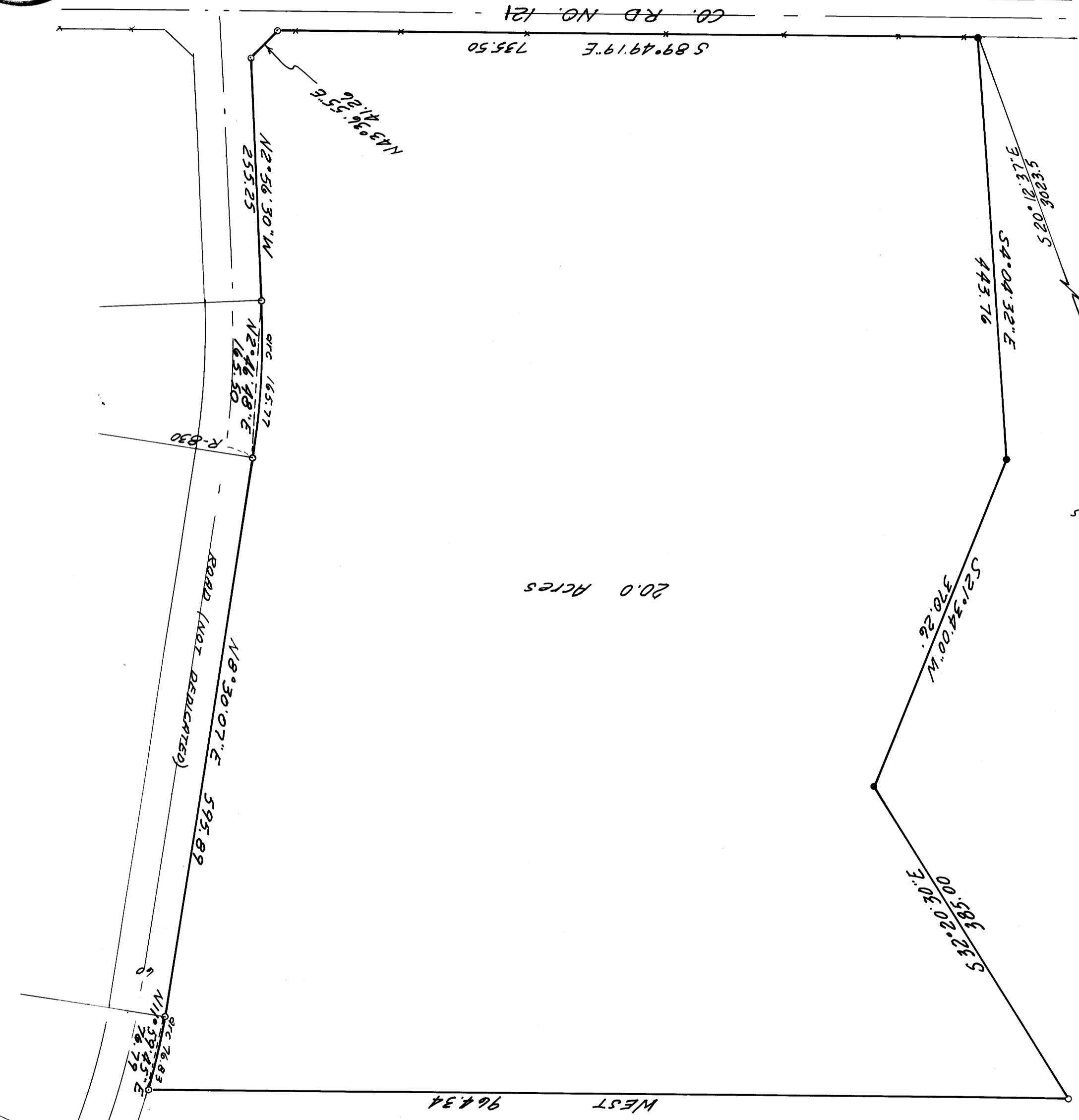
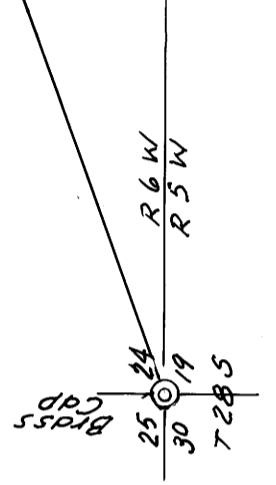
FILED
RECEIVED

COUNTY SURVEYOR
DOUGLAS COUNTY, ORE.



ROAD (NOT DEDICATED)
N18°30'07\"E 595.89

20.0 Acres



• 5/8" iron rods found.
o 5/8" " " set.
Reference -
Base of bearing taken from solar.

