

COUNTY SURVEYORS FILE DATA
DO NOT REMOVE FROM OFFICE

Victor M. McLind
REGISTERED PROFESSIONAL LAND SURVEYOR
STATE OF OREGON
COUNTY OF CLATSOP

SURVEY FOR DEED DESCRIPTION IN SECTION 18, T26S, R4W, W.M.

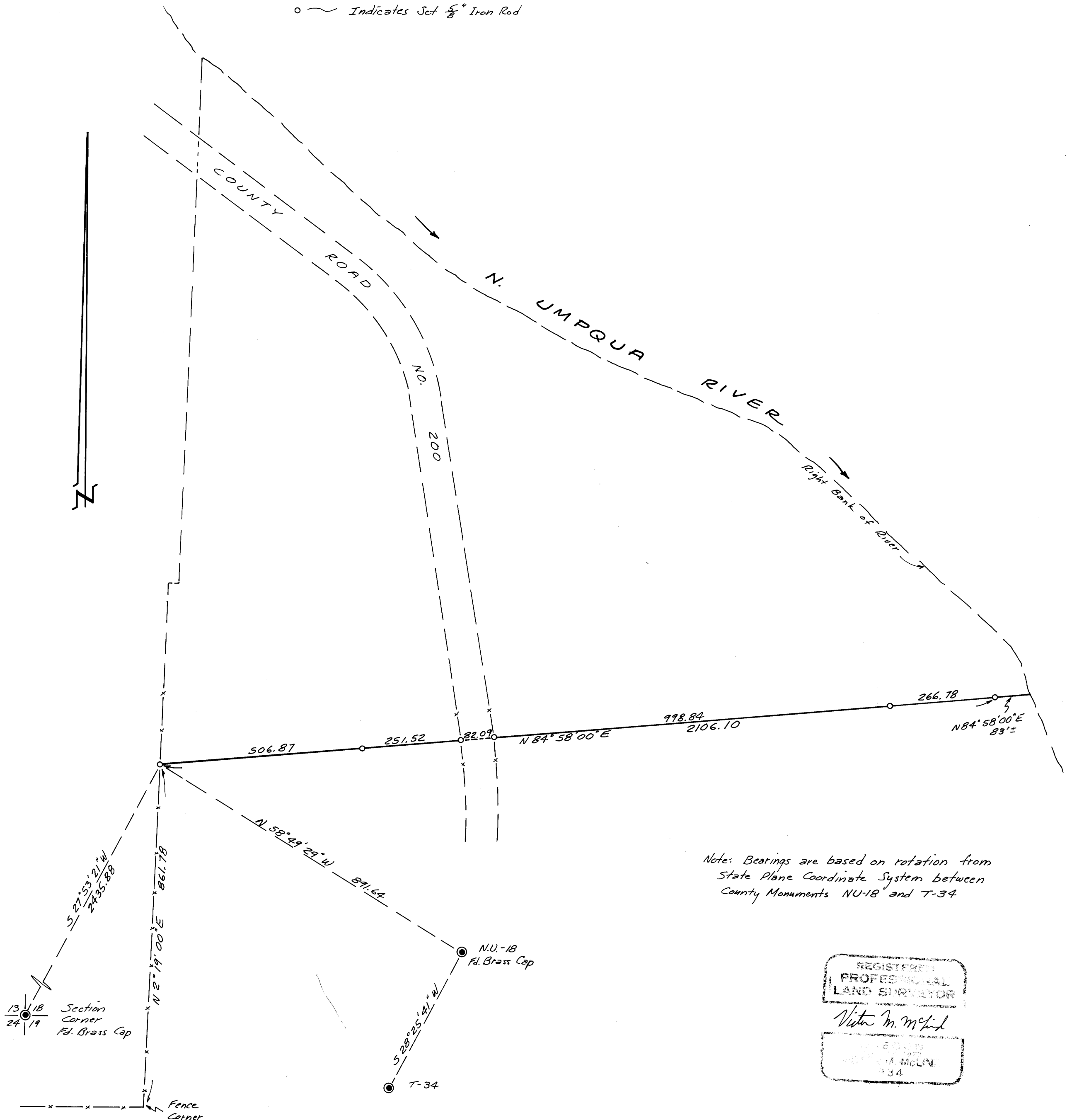
Surveyed for Mrs. E.G. Kohlhaugen

Surveyed by Victor M. McLind

March 1973

Scale: 1" = 200'

o ~ Indicates Set $\frac{5}{8}$ " Iron Rod



Note: Bearings are based on rotation from
State Plane Coordinate System between
County Monuments NU-18 and T-34

REGISTERED
PROFESSIONAL
LAND SURVEYOR
Victor M. McLind
STATE OF OREGON
VICTOR A. MCLIND
1934