

SURVEY IN SECTIONS 3 and 4, T. 29 S., R. 6 W., W.M.

COUNTY SURVEYORS FILE DATA
DO NOT REMOVE FROM OFFICE

Surveyed for - CHARLES HUGHES

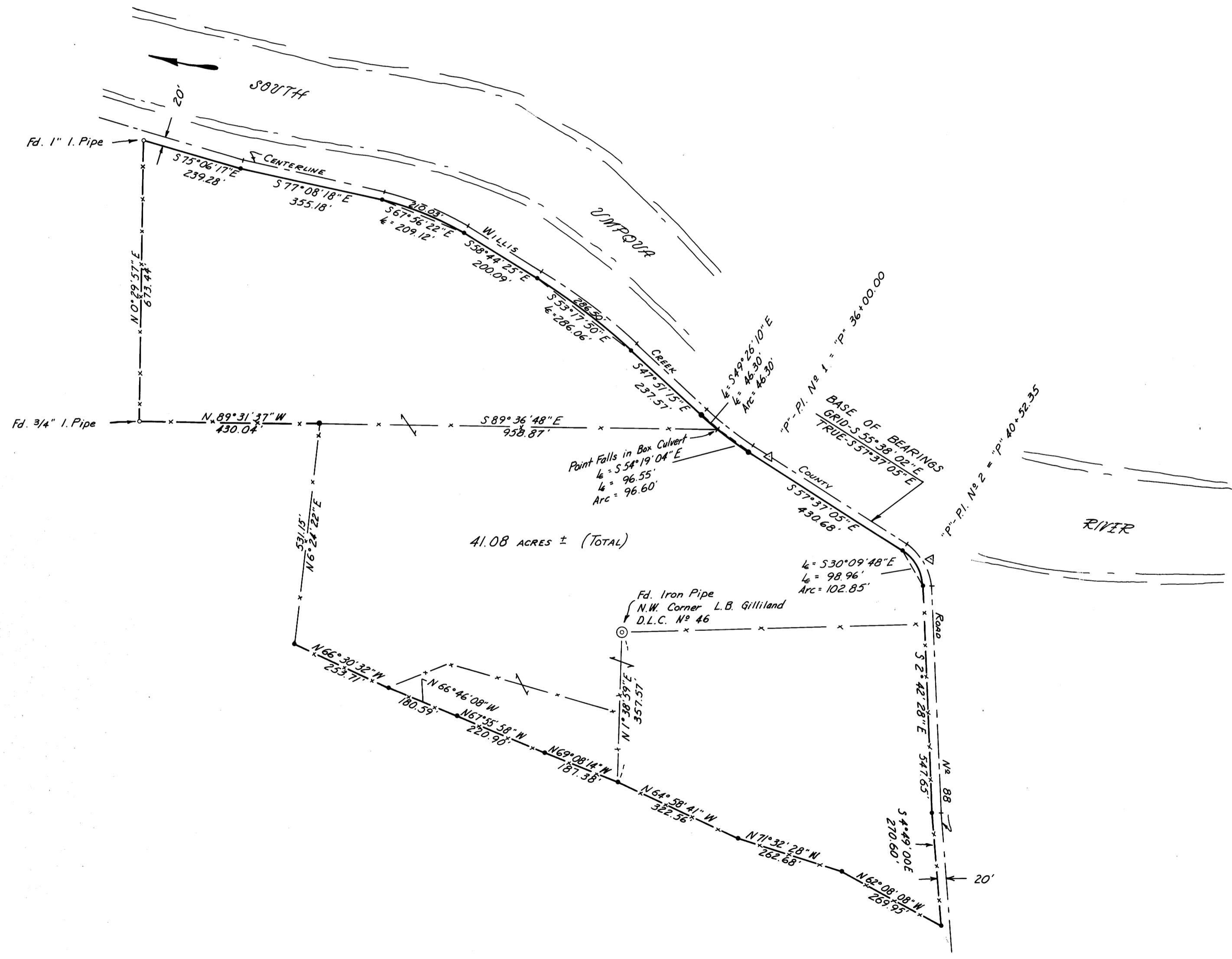
Surveyed by - DON E. GARRETT

March 1973

Scale 1" = 200'

• - Denotes 5/8" I. Rod Set

REGISTERED
MAY 13 1973
COUNTY SURVEYORS
ROUGHER COUNTY, ORE.



REGISTERED
PROFESSIONAL
LAND SURVEYOR

Don E. Garrett
OREGON
JULY 14, 1961
DON E. GARRETT
544

MAY 11 1978