

# SURVEY FOR PROPERTY CORNERS

## IN SEC. 7, T. 29 S., R. 7 W., W. M.

### FOR CARL SUMMERLIN

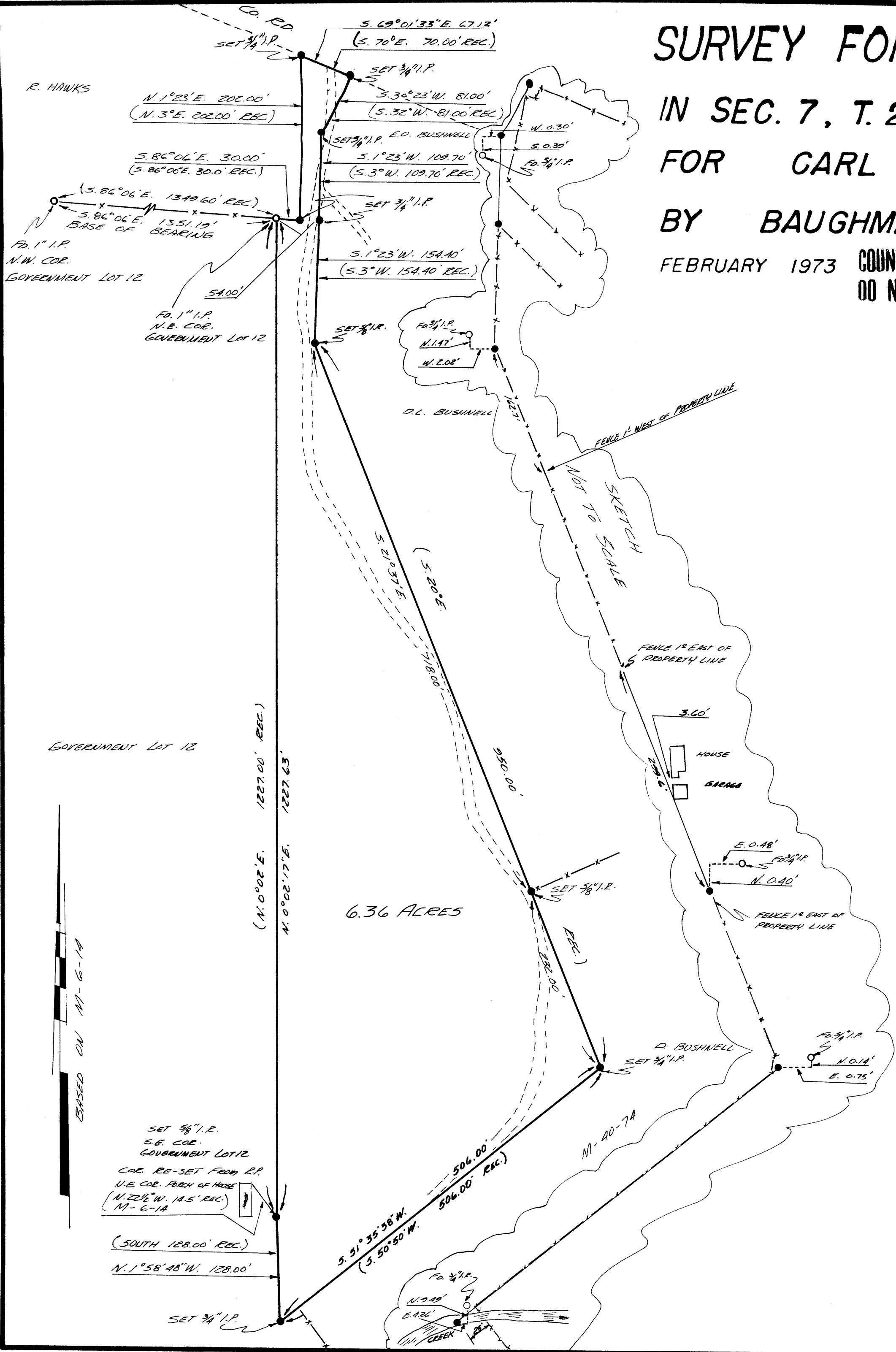
### BY BAUGHMAN SURVEYING SERVICE

FEBRUARY 1973 COUNTY SURVEYORS FILE DAY SCALE 1" = 100'  
DO NOT REMOVE FROM OFFICE

FILED  
RECEIVED

FEB 21 1973

COUNTY SURVEYOR  
DOUGLAS COUNTY, ORE.



GOVERNMENT LOT 12

GOVERNMENT LOT 12

6.36 ACRES

M-20-7A

REGISTERED  
PROFESSIONAL  
LAND SURVEYOR

*Eugene A. Bloom*  
OREGON  
MAY 13, 1960  
EUGENE A. BLOOM  
492